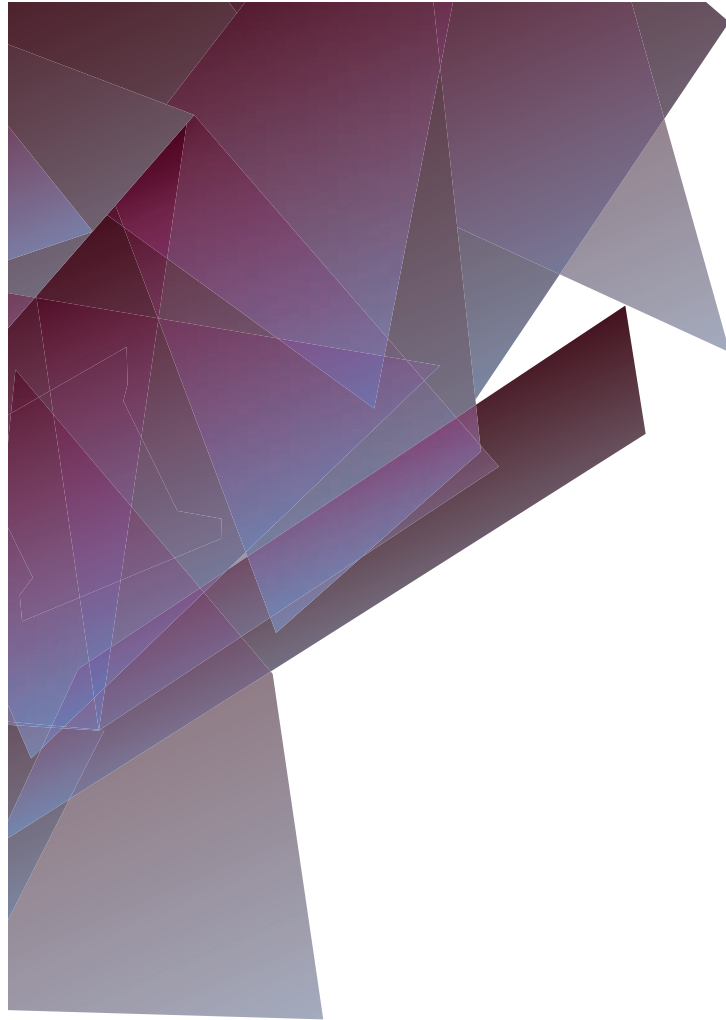




# NOTES

[illegible]

## A MESSAGE FROM THE PRESIDENT

I believe this year may be our best and most memorable event, with carefully selected speakers, thought-provoking panels and workshops, unexpected performances, and the opportunity to meet amazing people from all over the country.

It's an exciting time for APAHE as we continue to grow and adapt. We have grown tremendously over the past few years, and I believe this is the result of our Board's shared commitment to be responsive to the myriad needs of the communities and people we represent and serve combined with your vote of confidence in our organization.

Throughout this conference, I ask you to stay engaged and help us shape the future of APAHE. My personal thanks goes out to all of you for taking time out of your busy schedule to join us!

*[Handwritten signature]*

Wyman M. Fong  
President, Asian Pacific Americans  
in Higher Education

Wyman M. Fong, President  
A. Gabriel Esteban, Ph.D., Vice President  
William "Bill" Kidder, Secretary  
Vince A. Sales, Treasurer  
Ibrahim "Abe" Ali, Member, Board of Directors  
Wynne W. Chin, Ph.D., Member, Board of Directors  
Frank Chong, Ed.D., Member, Board of Directors  
Christine C. Iijima Hall, Ph.D., SPHR, Member, Board of Directors  
Patricia A. Neilson, Ed.D., Member, Board of Directors  
Judy K. Sakaki, Ph.D., Member, Board of Directors  
Noki Seekao, Member, Board of Directors  
Audrey Yamagata-Noji, Ph.D., Member, Board of Directors

April 10 -11, 2014  
Hilton San Francisco Financial District  
San Francisco, California  
[www.apahenational.org](http://www.apahenational.org)

# PROGRAM AT A GLANCE

**THURSDAY, APRIL 10, 2014**

7:30 AM

**Registration, Continental Breakfast, and Networking**  
HILTON HOTEL, 3RD FLOOR

8:30 AM

**Welcome and Introductions**  
HILTON BALLROOM, 3RD FLOOR

**Greetings**

HILTON BALLROOM, 3RD FLOOR

9:00 AM

**Opening Keynote**  
HILTON BALLROOM, 3RD FLOOR

10:00 AM

**Networking Break**  
HILTON HOTEL, 2ND AND 3RD FLOORS

10:15 AM - 11:15 AM

**Concurrent Session #1**

1a. Navigating Intersecting Identities Through Authentic Dialogue  
HILTON HOTEL, JACKSON ROOM

1b. "Our Words, Our Worlds" — Autobiographical Stories by APA Undocumented Students  
HILTON HOTEL, SANSOME ROOM

1c. Asian Women United: Producing Educational Materials through a Community Organization  
HILTON HOTEL, MONTGOMERY ROOM

1d. The Challenge of Mobilizing Asian American College Students in the Central Valley  
HILTON HOTEL, WASHINGTON ROOM

1e. Improving the Culture of Writing for AAPI Students at San Jose State University  
HILTON HOTEL, MASON I ROOM

1f. Advocacy among Hmong Americans in Higher Education  
HILTON HOTEL, MASON II ROOM

Poster Session: Factors That Motivate Faculty to Participate in Professional Development Activities  
HILTON HOTEL, 2ND FLOOR LOBBY

11:30 AM - 12:30 PM

**Concurrent Session #2**

2a. Learning to Lead: CSU AAPI Student Ambassador Program  
HILTON HOTEL, JACKSON ROOM

2b. Case Study: UC Berkeley's Undocumented Student Program  
HILTON HOTEL, SANSOME ROOM

2c. The SAT: Delivering Opportunity for Readiness, Access and Success  
HILTON HOTEL, MONTGOMERY ROOM

2d. The Impact of Cultural Values on APIs in Higher Education  
HILTON HOTEL, WASHINGTON ROOM

2e. Professional Competencies for Student Affairs Professionals  
HILTON HOTEL, MASON I ROOM

2f. The Emerging Executive: API Women in Higher Education  
HILTON HOTEL, MASON II ROOM

12:30 PM

**Lunch**

- APAHE 2014 Awards
- Gerald Shimada Memorial Scholarship
- Keynote Speaker

HILTON BALLROOM, 3RD FLOOR

2:00 PM

**Break: Visit Vendors, Tour of Chinese Culture Center, and Book signing**

HILTON HOTEL, 2ND AND 3RD FLOORS

2:30 PM

**Concurrent Session #3**

3a. Creating Community and Coalition: APIA Staff and Faculty Organizations in Higher Education

HILTON HOTEL, JACKSON ROOM

3b. Raising Educational Achievement in Collaborative Hubs

HILTON HOTEL, SANSOME ROOM

3c. "Talk Story" Under the Fale Fono: Seizing the Moment with Underrepresented Pacific Islander Community College Students

HILTON HOTEL, MONTGOMERY ROOM

3d. Challenging Balance: API Women on Leading, Family and Changing the Landscape  
HILTON HOTEL, WASHINGTON ROOM

3e. Managing the Powerful & Influential in Higher Education Projects

HILTON HOTEL, MASON I ROOM

3f. Mixed, Not Mixed Up: Exploring the Power of Self Narrative in the Development of Multiracial College Students  
HILTON HOTEL, MASON II ROOM

Poster Session: The Unique Experiences of Laotian American College Students: An Underrepresented Subgroup Within the Asian American Population

HILTON HOTEL, 2ND FLOOR LOBBY

3:30 PM

**Networking Break**

HILTON HOTEL, 2ND FLOOR

3:45 PM - 4:45 PM

**Concurrent Session #4**

4a. First-Generation College Students Navigating Higher Education and the Role of Faculty

HILTON HOTEL, JACKSON ROOM

4b. Promoting API Student Mental Health in Higher Education

HILTON HOTEL, SANSOME ROOM

EDUCATE.  
ILLUMINATE.  
SERVE.



From our students to  
UC faculty and staff,  
we are here to shine  
a light on what  
is possible.

We work together  
in service of all  
students across the  
ten UC campuses.



ACCESS. SUCCESS.  
WWW.UNIVERSITYOFCALIFORNIA.EDU





# Leadership Education for Asian Pacifics, Inc.

proudly partners with

## Asian Pacific Americans in Higher Educations (APAHE)

for the 2014 National Conference.

# Be a leader. Keep Your Values. Develop New Skills.®

Learn how by attending our leadership development programs or events.

July 9-12, 2014

Leadership Development Program for Higher Education in Los Angeles, CA



### July 24, 2014 LEAP's Annual Leadership Awards Gala Los Angeles, CA

Honorees

David R. Barclay Alumni Leadership Award: **Lori Adrian PhD**, President, Coastline Community College

**Irene Chang-Britt**, President, Pepperidge Farm

**Glen S. Fukushima**, Senior Fellow, Center for American Progress/Formal President of Airbus, Japan

**June Berk**, Community Advocate

Community Award: **Pacific Southwest Region of the Anti-Defamation League**



Developing People. Informing Society. Empowering Communities.

<http://twitter.com/LEAPgrowleaders>

<http://www.facebook.com/LEAPgrowleaders>



4c. Our Paths to Follow: Scholarship as Social Justice for 2nd Generation Pin@s from San Diego, California  
HILTON HOTEL, MONTGOMERY ROOM

4d. Leadership Pathways In Ethnic Studies: Preserving Our History: The Sacramento State Wayne Maeda Asian American Studies Archive and the 65th Street Corridor Community Collaborative Project  
HILTON HOTEL, WASHINGTON ROOM

4e. Strategically Planning Your Career: Positioning Yourself for the Next Promotion  
HILTON HOTEL, MASON I ROOM

4f. TESTED  
HILTON HOTEL, MASON II ROOM

5:00 PM  
**APAHE Opening Reception/  
Raffle**

• Live Performance by LEGACI  
HILTON BALLROOM, 3RD FLOOR

### FRIDAY, APRIL 11, 2014

7:30 AM  
**Registration, Continental  
Breakfast, and Networking**  
HILTON HOTEL, 3RD FLOOR

8:30 AM  
**Acknowledgments and  
Recognitions**  
HILTON BALLROOM, 3RD FLOOR

8:45 AM  
**APAHE Unveiled: The Importance  
and Significance of a Brand**  
HILTON BALLROOM, 3RD FLOOR

9:30 AM  
**Having a Seat at the Table**  
HILTON BALLROOM, 3RD FLOOR

10:45 AM  
**Networking Break**  
HILTON HOTEL, 2ND AND 3RD FLOORS

11:00 AM - 12:00 PM  
**Concurrent Session #1**

1a. Getting Acquainted: Student to Student  
HILTON HOTEL, JACKSON ROOM

1b. Advancing Asian American and Pacific Islander Agenda in Higher Education: Current Efforts and Future Prospects  
HILTON HOTEL, SANSOME ROOM

1c. Healthy Professional Stretches: Going beyond the Norm, Seizing Opportunities, and Building Future Opportunities and Your Personal Legacy  
HILTON HOTEL, MONTGOMERY ROOM

1d. Improvise the Moment and Build Your Legacy  
HILTON HOTEL, WASHINGTON ROOM

1e. An Informal Dialog with Chief Executive Officers/College Presidents (Community College Edition)  
HILTON HOTEL, MASON I AND II ROOMS  
COMBINED

Poster Session: Mong American Experiences in the U.S. Revisited  
HILTON HOTEL, 2ND FLOOR LOBBY

12:00 PM  
**Lunch**  
HILTON BALLROOM, 3RD FLOOR

• **Our Voice, Our Future**  
• **Asian Americans at a  
Crossroads: Majority, Minority,  
Both, or Neither?**

1:30 PM  
**Break: Visit Vendors, Tour of  
Chinese Culture Center and  
Book signing**  
HILTON HOTEL, 2ND AND 3RD FLOORS

2:00 PM - 3:00 PM  
**Concurrent Session #2**  
2a. Open Networking Space  
HILTON HOTEL, JACKSON ROOM

2b. Models of Asian American Studies Curriculum, Pt 1  
HILTON HOTEL, SANSOME ROOM

2c. "Now we can stand up to fight for our rights: Critical Asian American Leadership in Our Classrooms and Our Communities"  
HILTON HOTEL, MONTGOMERY ROOM

2d. Full Circle Project at Sacramento State: Gathering Institutional Data for Promoting API Student Academic Success

HILTON HOTEL, WASHINGTON ROOM  
2e. An Informal Dialog with Chief Executive Officers/College Presidents (University Edition)  
HILTON HOTEL, MASON I AND II ROOMS  
COMBINED

3:15 PM - 4:15 PM  
**Concurrent Session #3**  
3a. Reducing Educational and Legislative Resources: The Impact on API Subpopulations  
HILTON HOTEL, JACKSON ROOM

3b. Models of Asian American Studies Curriculum, Pt 2  
HILTON HOTEL, SANSOME ROOM

3c. The API Student's Pathway to Leadership & Success  
HILTON HOTEL, MONTGOMERY ROOM

3d. Defining the 4 Cs of your Success: Competency, Capability, Capacity and Confidence  
HILTON HOTEL, WASHINGTON ROOM

3e. Case Studies of Effective Community Partnerships  
HILTON HOTEL, MASON I AND II ROOMS  
COMBINED

4:30 PM  
**Closing Raffle and Townhall  
Discussion: APAHE's Future  
Agenda**  
HILTON BALLROOM, 3RD FLOOR

5:30 PM  
**APAHE Closing Reception**  
THE CHINESE HISTORICAL SOCIETY OF AMERICA  
MUSEUM  
965 CLAY STREET, SAN FRANCISCO, CA 94108



# SESSION DESCRIPTION

THURSDAY, APRIL 10, 2014

7:30 AM

## Registration, Continental Breakfast, and Networking

HILTON HOTEL, 3RD FLOOR

8:30 AM

## Welcome and Introductions

HILTON BALLROOM, 3RD FLOOR

Wyman M. Fong

President, Asian Pacific Americans in Higher Education

Vice Chancellor, Human Resources, Chabot-Las Positas Community College District

## Greetings

Leslie E. Wong, Ph.D., President, San Francisco State University

9:00 AM

## Opening Keynote: To be an Asian Pacific Islander in the Twenty-First Century is to be Offered a Gift

HILTON BALLROOM, 3RD FLOOR

Patrick Hayashi, Ph.D., Artist, Community Activist and former Associate President of the University of California System

10:00 AM

## Networking Break

HILTON HOTEL, 2ND AND 3RD FLOORS

10:15 AM TO 11:15 AM, HILTON HOTEL, 2ND FLOOR

## CONCURRENT SESSION #1

### 1a. Navigating Intersecting Identities Through Authentic Dialog

HILTON HOTEL, JACKSON ROOM

The outside world sees our race, gender and size at first glance. However, we are much more complex and hold multiple identities that we navigate on a daily basis. What does it really mean to hold “intersecting identities”? How do we navigate our different communities? This roundtable is an opportunity to build community through dialogue and reflection about who we are as complex individuals who may hold intersecting identities and memberships in communities that are not historically accepted in the AAPI community. Participants will be able to share their perspectives in a safe environment.

#### PRESENTERS:

Allison Lau, Ph.D., Associate Dean for Counseling & Student Judicial Affairs, Highline Community College

### 1b. “Our Words, Our Worlds” — Autobiographical Stories by APA Undocumented Students

HILTON HOTEL, SANSOME ROOM

Of the two million undocumented youth and young adults currently living in the U.S., about 10% are Asian. In the UC system alone, about 45% of undocumented students are Asian. A small number of APA undocumented students have stepped out of the shadows and are boldly sharing their stories. Learn how APA undocumented youth leaders are using storytelling as a powerful tool for healing, advocacy, and empowerment.

#### PRESENTERS:

Akiko Aspillaga, Community Organizer, Asian Students Promoting Immigrant Rights through Education (ASPIRE)  
Catherine Eusebio, Board Member, United We Dream  
Katharine Gin, J.D. (moderator), Cofounder & Executive Director, Educators for Fair Consideration (Moderator)  
New Latthivongskorn, Co-founder, Pre-Health Dreamers  
Mario Lio, Construction Project Manager, Rebarber Enterprises

### 1c. Asian Women United: Producing Educational Materials through a Community Organization

HILTON HOTEL, MONTGOMERY ROOM

Since 1976, AWU has operated as a volunteer run non-profit, and has produced educational materials that spotlight the experiences of AAPI women. AWU materials, including Making Waves: Writings By and About Asian American Women and Slaying the Dragon: Asian Women in U.S. Television and Film, have been used in Asian American Studies classrooms since 1982. The panel will present how AWU created content for community use and furthers the discourse around AAPI women in higher education.

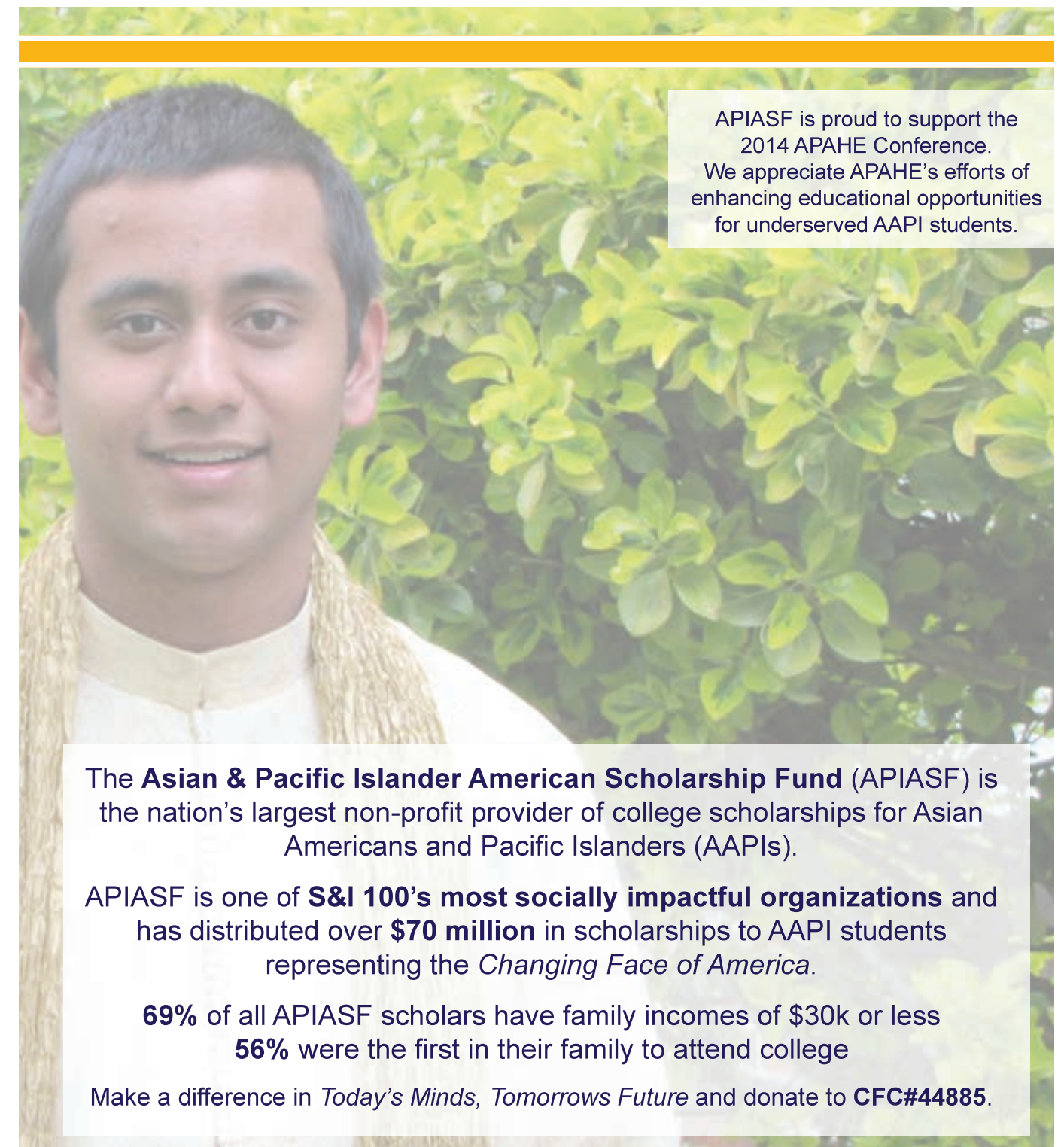
#### PRESENTERS:

Eunice Kwon, Ph.D., Coordinator of Asian Pacific American Student Development, University of California, Berkeley  
Hannah Michell, MFA, Lecturer, Asian American Studies, University of California, Berkeley  
Evelyn Rodriguez, Ph.D., Professor of Sociology at University of San Francisco and Director of USF’s Asian Pacific American Studies Program  
Vivien Kim Thorp, Communications Manager at Meals On Wheels of San Francisco

### 1d. The Challenge of Mobilizing Asian American College Students in the Central Valley

HILTON HOTEL, WASHINGTON ROOM

The Asian Faculty and Staff Association (AFSA) at California State University, Fresno, administered a survey to its Southeast Asian students (including Hmong, Cambodian, Laotian, and Vietnamese); in order to identify obstacles they face in school,



APIASF is proud to support the 2014 APAHE Conference. We appreciate APAHE's efforts of enhancing educational opportunities for underserved AAPI students.

The Asian & Pacific Islander American Scholarship Fund (APIASF) is the nation's largest non-profit provider of college scholarships for Asian Americans and Pacific Islanders (AAPIs).

APIASF is one of **S&I 100's most socially impactful organizations** and has distributed over **\$70 million** in scholarships to AAPI students representing the *Changing Face of America*.

**69%** of all APIASF scholars have family incomes of \$30k or less  
**56%** were the first in their family to attend college

Make a difference in *Today's Minds, Tomorrows Future* and donate to **CFC#44885**.



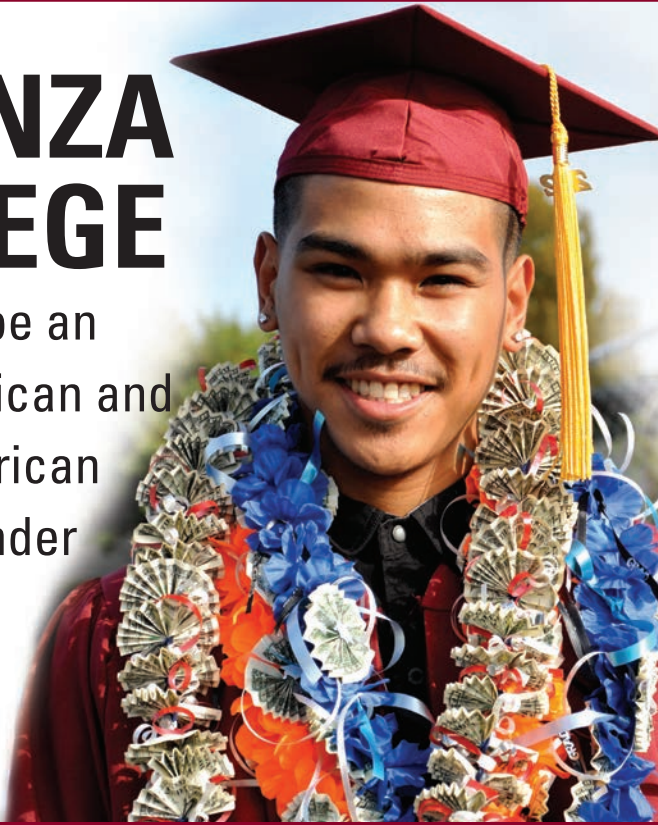
**APIASF**® Today's Minds, Tomorrow's Future®  
Asian & Pacific Islander American Scholarship Fund  
apiasf.org 202-986-6892 CFC#44885



# DE ANZA COLLEGE

is proud to be an Asian American and Native American Pacific Islander Serving Institution

[www.deanza.edu](http://www.deanza.edu)



## Contra Costa Community College District

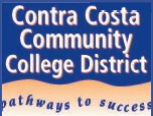
Brentwood Center • Contra Costa College • Diablo Valley College • Los Medanos College • San Ramon Campus

### SUCCESS STARTS HERE

The Contra Costa Community College District values diversity in the academic environment. We welcome all people by manifesting a culture of inclusion and respect for all. The District invites you to consider joining us as a valued member of our team. Please visit our career opportunities web site at: [www.4cd.edu](http://www.4cd.edu) and click on career opportunities to learn more about our faculty, management and classified job openings.



*Contra Costa College, Diablo Valley College, Los Medanos College*



make a change  
**MAKE A DIFFERENCE**

Please visit our website at  
[www.4cd.net](http://www.4cd.net)  
For complete details about the job and application procedure.  
Equal Opportunity Employer

family, and community, which would affect retention/graduation rates and overall academic success. The findings will be used to better serve this underrepresented student group at Fresno State and other college campuses.

**PRESENTERS:**  
Gena Lew Gong, Lecturer, Department of Anthropology, California State University, Fresno  
Hiromi Kubo, Public Services Librarian, Library, California State University, Fresno  
Yoshiko Takahashi, Ph.D., Professor, Department of Criminology, California State University, Fresno

**1e. Improving the Culture of Writing for AAPI Students at San Jose State University**

**HILTON HOTEL, MASON I ROOM**  
In its AANAPISI project, SJSU has focused on improving the writing of AAPI students. This panel will present the AANAPISI activities at SJSU including reorganizing the existing writing support services, enabling more data-based decision-making about student retention and graduation for AAPI students, implementing proactive writing strategies and changing the SJSU writing culture from a policy driven approach to an action-oriented approach.

**PRESENTERS:**  
Patricia Backer, Ph.D., Professor of Technology and SJSU’s AANAPISI Evaluator; San Jose State University  
Michelle Hager, Director of SJSU’s University Writing Center, San Jose State University  
Linda Mitchell, Ph.D., Professor of English and Director, SJSU Writing Center, San Jose State University  
Maureen Scharberg, Ph.D. Associate Vice President, Student Academic Success Services and Principal Investigator of SJSU’s AANAPISI Grant, San Jose State University

**1f. Advocacy among Hmong Americans in Higher Education**

**HILTON HOTEL, MASON II ROOM**  
Led by the Provost, Dr. Belle Wei, Chico State engaged Hmong American faculty, staff and students in 61 rounds of “possibility conversations” to renew the Academic Plan, This panel will share and discuss issues of advocacy and success: (1) how to empower minorities among minorities on a campus that is predominantly white, (2) how to mutually transform leadership pathways and Hmong cultures, and (3) how to create effective short- and long-term programs for Hmong people’s visibility and success in American higher education.

**PRESENTERS:**  
Wenshu Lee, Ph.D., Associate Vice President for Faculty Affairs, California State University, Chico  
MaiHoua Lo, Financial Aid Analyst, California State University, Chico  
Yer Thao, Transition Specialist, Chico Student Success Center ,

California State University, Chico  
Pa Vue, Program Advisor, Upward Bound Projects, California State University Chico

**Poster Session: Factors That Motivate Faculty to Participate in Professional Development Activities**

**HILTON HOTEL, 2ND FLOOR LOBBY**  
Faculty Professional Development (FPD) improves faculty job performance and student success, reduce job isolation and increase job satisfaction. Higher education work environment and faculty demographics changed, FPD changed in content and formats of delivery caused some problems in FPD. Low participation by faculty in FPD activities, mismatch of FPD programs that do not meet faculty needs, and changing faculty motivations and perceptions about the value of FPD are problems facing FPD providers and policy makers. The purpose of this mixed methods study was to identify factors that motivate faculty to attend FPD and to evaluate faculty perception about the value of faculty development.

**PRESENTER:**  
Xiaoyu Lian, Ed.D. Student, California State University, Fullerton

11:30 AM TO 12:30 PM, HILTON HOTEL, 2ND FLOOR  
**CONCURRENT SESSION #2**

**2a. Learning to Lead: CSU AAPI Student Ambassador Program**

**HILTON HOTEL, JACKSON ROOM**  
This panel discussion will showcase the California State University (CSU) Asian American Pacific Islander (AAPI) Student Ambassador Program as a model for strengthening ethnic identity development, leadership skills, and service to their communities. Panelists will discuss the recruitment of AAPI student ambassadors; components of the training program; roles and responsibilities of ambassadors in promoting college preparation among under served AAPI communities; and experiences of student ambassadors.

**PRESENTERS:**  
Timothy P. Fong, Ph.D., Professor, Ethnic Studies/Director and Principal Investigator, Full Circle Project, California State University, Sacramento (Discussant)  
Simon Kim, Ph.D., Professor, California State University, Long Beach (Chair)  
Thavery Lay-Bounpraseuth, Asian & Pacific Islander Coordinator at Cal Poly Pomona  
Karen Nakai, Professor, California State University, Long Beach  
Jean Paul Nguyen, Enrollment Counselor at California State University, East Bay  
Chao Vang, Ethnic Studies Department, California State University, Sacramento



2b. Case Study: UC Berkeley’s Undocumented Student Program

HILTON HOTEL, SANSOME ROOM

The Undocumented Student Program (USP) at UC Berkeley is a program designed to meet the holistic needs of undocumented students at a top tier research one university. This session will describe and analyze the development towards creating an inclusive campus climate in serving undocumented students. It will also address the unique racial and ethnic conditions and experiences of API undocumented students in higher education and identify the barriers to their success. With an introduction to the academic counseling model used by USP and UC Berkeley’s Educational Opportunity Program (EOP), participants will learn how to implement holistic and solution focused frameworks when advising undocumented students. Furthermore, participants will also develop strategies on how to collaborate with campus and community resources to create allies, access, equity and inclusion.

PRESENTER:  
Meng So, Director, Undocumented Student Program, University of California, Berkeley

2c. The SAT: Delivering Opportunity for Readiness, Access and Success

HILTON HOTEL, MONTGOMERY ROOM

Learn about the College Board’s recently announced Opportunity Agenda and the redesign of the SAT, including design principles and information about tools, resources and research. Hear what your higher education colleagues have identified as critical components of the proposed revisions, and how College Board is working to ensure that students’ work is focused on readiness, access and success. Together, we are in a position to deliver opportunity to all students. Be a part of this important dialog!

PRESENTERS:  
Anita Cassity, Director of District and State Strategy Outreach, The College Board  
Michael Sexton, Vice President for Enrollment Management, Santa Clara University  
Ken Woods, Executive Director, Higher Education, The College Board

2d. The Impact of Cultural Values on APIs in Higher Education

HILTON HOTEL, WASHINGTON ROOM

This presentation will provide a better understanding of how traditional Asian cultural values impact API students in higher education. Specifically, this session will present empirical evidence on real life experiences of college-going students, including the tensions and psychological challenges impacting their academic performances. The presenters will share promising practices for supporting API students as they attempt to negotiate their Asian cultural values within a Western academic environment.

PRESENTERS:  
Zachary Baillie, Ph.D. Candidate, Department of English  
Arkansas Tech University  
Hwa Seong “Christine” Oh, Career Counselor/Diversity Coordinator, Saint Mary’s College of California  
Min Wang, Ph.D. Candidate, The University of Alabama

2e. Professional Competencies for Student Affairs Professionals

HILTON HOTEL, MASON I ROOM

Looking to advance your career in Student Affairs. Whether you are an experienced manager or new professional, professional skill building is an ongoing process. To help us along the way, ACPA and NASPA have published a Professional Competency Areas for Student Affairs Practitioners. This document serves as a guide for the knowledge, skills, and attitudes of a successful Student Affairs Professional of all levels. This session will introduce participants to these competencies, discuss applications of the competencies as well as new and emerging competencies in the field.

PRESENTER:  
Arnold Paguio, Student Organization Coordinator, San Francisco State University

2f. The Emerging Executive: API Women in Higher Education

HILTON HOTEL, MASON II ROOM

Higher education panels commonly feature “seasoned” female administrators providing accounts of their journey in administration and provide wisdom of how to succeed. This current panel will take a more “participant observer” perspective as API women and discuss how they are currently navigating higher education administration. Included in their presentations will be their career paths, passions, detours, challenges, support networks, successes and future goals.

PRESENTERS:  
Christine Iijima Hall, Ph.D., Retired Higher Education Administrator  
Sunny Lee, Assistant Ombudsperson University of California, Berkeley  
Dawn Lee Tu, Ph.D., Director of Cultural Centers, University of San Francisco  
Belinda Vea, Ph.D., Policy and Program Analyst, University of California Office of the President – Student Affairs

12:30 PM  
Lunch  
HILTON BALLROOM, 3RD FLOOR

- APAHE 2014 Awards
- Gerald Shimada Memorial Scholarship
- Keynote Speaker: Helen Zia, Award Winning Journalist and Scholar

Introduction by Judy Sakaki, Ph.D., Vice President of Student Affairs, University of California, Office of the President.

**Blending ACADEMICS, CULTURE, SUPPORT**

Through Mt. SAC’s highly acclaimed ARISE program, our Asian and Pacific Islander students enjoy an enriching college experience with free tutorial services, study hall sessions, counseling and advising support, as well as affirming cultural celebrations. This unique socio-academic blend fosters their pursuit for academic success and life fulfillment.

**ARISE!**  
Asian American Pacific Islander Program & Services  
A federal AANAPISI Grant Program  
Mt. San Antonio College  
www.mtsac.edu/arise

**Santa Monica College**

*Changing Lives in the Global Community through Excellence in Education*

**VISION**

**SMC Salutes APAHE for Helping to Facilitate Change!**

1900 Pico Boulevard, Santa Monica, CA 90405 Telephone: (310) 434-4000 • www.smc.edu





## We do our job, so **YOU** can do yours!

- ◆ FREE AD&D Insurance
- ◆ FREE Professional Liability Coverage
- ◆ FREE Legal Services
- ◆ Advocacy that Represents **YOU**
- ◆ Communications that Inform
- ◆ Year-Round Networking Opportunities
- ◆ Professional Development Programs
- ◆ Admin 101
- ◆ Great Deans Program
- ◆ Mentor Program
- ◆ Admin 201
- ◆ ...and so much MORE!

Your colleagues around the state know first-hand the career-building benefits of ACCCA membership.

Whether you're a seasoned professional or just starting out, ACCCA works for you!

Visit [www.accca.org](http://www.accca.org) today to get started!



2:00 PM

### Break: Visit Vendors, Tour of Chinese Culture Center, and Book signing

HILTON HOTEL, 2ND AND 3RD FLOORS

2:30 PM TO 3:30 PM, HILTON HOTEL, 2ND FLOOR

### CONCURRENT SESSION #3

#### 3a. Creating Community and Coalition: APIA Staff and Faculty Organizations in Higher Education

HILTON HOTEL, JACKSON ROOM

This roundtable will discuss API staff associations, including the benefits and challenges of creating an association. Discussion topics will include but are not limited to history, structure, funding, professional development, events, and membership. We will share promising practices for creating, maintaining API organizations, and navigating institutional challenges. Open to staff and faculty interested or involved in API organizations at four-year institutions and community colleges.

##### PRESENTERS:

Rod Santos, Residence Affairs Supervisor, University of California, Berkeley (UC Berkeley APASA Co-Chair);  
Britt Sumida, Student Affairs Officer, University Of California, Davis (UC Davis APASA Co-Chair)

#### 3b. Raising Educational Achievement in Collaborative Hubs

HILTON HOTEL, SANSOME ROOM

CSU Chico has implemented REACH, a program that includes faculty and peer mentoring, weekly "study jams", and intentional co-curricular activities all aimed at creating a culture of student success for first generation college students. This presentation will examine the key components of the model including "lessons learned" from planning to the implementation of the program.

##### PRESENTERS:

Gary McMahon, Director, Chico Student Success Center; California State University, Chico  
Deanna Pierro, Achievement Specialist, Chico Student Success Center; California State University, Chico  
Amanda Thao, Student Mentor, California State University, Chico

#### 3c. "Talk Story" Under the Fale Fono: Seizing the Moment with Underrepresented Pacific Islander Community College Students

HILTON HOTEL, MONTGOMERY ROOM

Through the Asian American Native American Pacific Islander Serving Institutions (AANAPISI) grant, the Arise Program at Mt. San Antonio College began piloting a cultural intervention approach, the "fale fono", to support our Pacific Islander (PI)

students. Through the use of both "talk story" (group discussion) and reflective writing, our PI students discuss with us their needs, concerns and student development in this community.

##### PRESENTERS:

Aida Cuenza-Uvas, Director, Arise Program (AANAPISI Grant), Mt. San Antonio College  
Ula Matavao, Educational Advisor, Arise Program (AANAPISI Grant), Mt. San Antonio College

#### 3d. Challenging Balance: API Women on Leading, Family and Changing the Landscape

HILTON HOTEL, WASHINGTON ROOM

Lean In and Battle Hymn of the Tiger Mother created an enormous amount of dialogue about working parents and how race, culture, leadership and the eternal search for work life balance collide in our day to day lives. The larger questions we should be asking though is what it means for us as API women in leadership roles – what does balance look like with children, parents, work and other relationships? Does being a leader always mean giving up everything to get that coveted position, or are there degrees of leadership and ways to make an impact without being a CEO? Join four funny and experienced API leaders as we discuss leadership, being a working parent, what supportive environments could (and shouldn't) look like, and what that means day to day in the context of being an Asian American woman.

##### PRESENTERS:

Rosie Rimando-Chareunsap, Ed.D., Vice President of Student Services, South Seattle Community College  
Kimi Shigetani, Vice President, Community College League of California  
Tram Vo-Kumamoto, Dean of Math and Science, Chabot College  
Hyon Chu Yi-Baker, Director, MOSAIC Cross Cultural Center, San Jose State University

#### 3e. Managing the Powerful & Influential in Higher Education Projects

HILTON HOTEL, MASON I ROOM

Effective management of stakeholders' needs and expectations is crucial to the success of all projects. Workshop participants are invited to learn and share how to leverage their soft skills to manage stakeholders in higher-ed's project environment.

##### PRESENTERS:

Angela Chang, Management Analyst, University of California, Berkeley School of Law

#### 3f. Mixed, Not Mixed Up: Exploring the Power of Self Narrative in the Development of Multiracial College Students

HILTON HOTEL, MASON II ROOM

The dynamics of our country's changing demographics manifest



in our higher education system, as more multiracial students step foot on campus. In order to serve them, we must learn about mixed-race identity development. Attendees in this session will participate in exploration of race as a social construct and how mixed-race people challenge established paradigms. Participants will also develop personalized storytelling and communication skills to prepare them for future conversations.

**PRESENTERS:**  
Ardith Feroglia, Academic Adviser, University of Washington  
Melissa Sinclair, Coordinator, Students with Dependents Program, University of California, Los Angeles

**Poster Session: The Unique Experiences of Laotian American College Students: An Underrepresented Subgroup Within the Asian American Population**  
HILTON HOTEL, 2ND FLOOR LOBBY

Lao American college students' holistic identity development was examined in this study. As the U. S. Census (2010) indicated college graduation rate for Asian Americans as a whole was 49.7% compared to 27.8% for the overall U.S. population. Disaggregated data showed graduation rates of 26.2% for Vietnamese Americans, 14% for Hmong Americans, 13.7% for Cambodian Americans, and a very depressing rate of 11.9% for Laotian Americans. This discussion explores the distinctive experiences of Laotian American college students, critical strategic challenges and policy implications.

**PRESENTER:**  
Ketmani Kouanchao, Ed.D., Director, Mt. San Jacinto College

3:30 PM  
**Networking Break**  
HILTON HOTEL, 2ND FLOOR

3:45 PM TO 4:45 PM, HILTON HOTEL, 2ND FLOOR  
**CONCURRENT SESSION #4**

**4a. First-Generation College Students Navigating Higher Education and the Role of Faculty**  
HILTON HOTEL, JACKSON ROOM

The presenters will explain some common issues that First-Generation College Students have as they try to pursue higher education. As the first in their family to go to college, they may not know what to expect nor do they have anyone to turn to when they struggle in school. These are outsiders taking on the task of figuring out the unwritten rules of higher education and they need advocates and insiders who will take the time to listen and help them navigate this difficult course.

**PRESENTERS:**  
Jackson Yan, Instructor, Skyline College  
Skyline College Students: Jeffrey Hee, Paul Nguyen, Eddiezon Santiago

**4b. Promoting API Student Mental Health in Higher Education**  
HILTON HOTEL, SANSOME ROOM

College students experience mental health challenges that may be detrimental to their academic success. In particular, social and cultural influences may prevent APA students from articulating their need for help. Each higher education professional has a unique role to promote help-seeking behaviors. Presenters will discuss the important connection between mental health and academic success and share strategies on how to promote mental health awareness among APA students collectively across campus.

**PRESENTERS:**  
Kelly Bui, Mental Health Program Assistant, Ohlone College  
Mai Moua, Hmong Outreach Volunteer, Asian Pacific Community Counseling  
Lee Jay Vue; Coordinator, Asian Pacific Community Counseling  
Luwissa Wong, Mental Health Program Assistant, Ohlone College

**4c. Our Paths to Follow: Scholarship as Social Justice for 2nd Generation Pin@s from San Diego, California**  
HILTON HOTEL, MONTGOMERY ROOM

Those who view higher education/academia as an important space to effect change with the community are, at times, dismissed as elitist, inaccessible, or “not down for the cause.” The individuals on this roundtable have been engaged in connecting “community” and “academia” for many years, encouraging the idea that education is an ongoing, inclusive, dynamic processes that happen far beyond the classroom walls..

**PRESENTERS:**  
Erick Aragon, Counselor/Instructor, Laney College /De Anza College  
Melissa-Ann Nievera-Lozano, Ph.D. Candidate, Department of Education, University of California Santa Cruz  
Leezel Ramos, College Access, University of California, San Diego  
Lily Ann B. Villaraza, Ph.D. Candidate, Department of History, Northern Illinois University

**4d. Leadership Pathways In Ethnic Studies: Preserving Our History: The Sacramento State Wayne Maeda Asian American Studies Archive and the 65th Street Corridor Community Collaborative Project**  
HILTON HOTEL, WASHINGTON ROOM

This panel will look at two Sacramento State University Department of Ethnic Studies (ES) faculty and student collaborative projects. The Wayne Maeda Asian American Studies Archive looks at a new project that was inspired by the teaching of Wayne Maeda. The second project, the 65th Street Corridor Community Collaborative Project examines the history and impact of an Ethnic Studies led community service project.



## DiversityTRIO.com

|                               |                        |
|-------------------------------|------------------------|
| AsiansInHigherEd.com          | LGBTinHigherEd.com     |
| BlacksInHigherEd.com          | VeteransInHigherEd.com |
| HispanicsInHigherEd.com       | WomenAndHigherEd.com   |
| NativeAmericansInHigherEd.com | DisabledInHigherEd.com |

**The DiversityTrio.com family of job boards has expanded to help with diversity outreach needs.**

What started as three sites representing ethnic minorities has grown to eight unique destinations to serve ALL underrepresented groups.

Are you faced with recruiting a diverse workforce?  
What are your specific diversity outreach needs?

**For more information, contact:**  
**Bob@DiversityTrio.com | 800-311-0563**



## California's #1 Transfer College to UC, UCLA, and USC

**www.smc.edu**

**Santa Monica College | 1900 Pico Boulevard | Santa Monica, CA 90405**

**SANTA MONICA COMMUNITY COLLEGE DISTRICT BOARD OF TRUSTEES:**  
Dr. Susan Aminoff, Chair; Rob Rader, Vice Chair; Dr. Nancy Greenstein; Dr. Louise Jaffe; Dr. Margaret R. Quiñones-Perez; Barry Snell; Dr. Andrew Walzer; Jesse Ramirez, Student Trustee; Dr. Chui L. Tsang, Superintendent/President





Providing legal services to California community colleges and universities for over 35 years.  
Honored for our diversity, we serve the education community throughout California.

AALRR  
is pleased to support the  
**APAHE 2014 CONFERENCE**



*Recognizing Our Legacy, Seizing the Moment, Envisioning Our Future*

**Terry T. Tao, Partner**  
Cerritos • [ttao@aalrr.com](mailto:ttao@aalrr.com) • (562) 653-3200

**Hugh W. Lee, Partner**  
Cerritos • [hlee@aalrr.com](mailto:hlee@aalrr.com) • (562) 653-3200

**Martin A. Hom, Partner**  
San Diego • [mhom@aalrr.com](mailto:mhom@aalrr.com) • (858) 485-9526

**Paul M. Loya, Partner**  
Pleasanton • [ploya@aalrr.com](mailto:ploya@aalrr.com) • (925) 227-9200

**Lisa R. Allred, Partner**  
Sacramento • [lallred@aalrr.com](mailto:lallred@aalrr.com) • (916) 923-1200

**Jennifer R. Fain, Partner**  
Pleasanton • [jfain@aalrr.com](mailto:jfain@aalrr.com) • (925) 227-9200

Cerritos | Fresno | Irvine | Pasadena | Pleasanton | Riverside | Sacramento | San Diego  
[www.aalrr.com](http://www.aalrr.com)



**Piper Jaffray is Committed to California Community Colleges**

Piper Jaffray is a leading financial and underwriting firm serving the needs of California educational agencies.

We provide tailored financing solutions by structuring and underwriting:

- General Obligation Bond Elections
- Lease Revenue Bonds
- Tax and Revenue Anticipation Notes
- Bridge Financings
- Debt Refinancing/Restructuring
- GASB 45 Liability Fundings

*For more information, please contact:*

**Ivory Li**  
*Managing Director*  
Piper Jaffray & Co.  
345 California Street, Suite 2400  
San Francisco, CA 94104  
+1 415 616-1614  
[ivory.li@pjc.com](mailto:ivory.li@pjc.com)

Since 1895, Member SIPC and NYSE. © 2014 Piper Jaffray & Co. 3/14 CM-14-0210 [piperjaffray.com](http://piperjaffray.com)

**PiperJaffray**

**PRESENTERS:**

Griselda Casillas, Ethnic Studies/65th Corridor Staff, California State University, Sacramento  
Dong “Daniel” Wen Luo (Chair), Undergraduate Student, California State University, Sacramento  
Gregory Mark (Moderator), Professor, Ethnic Studies, California State University, Sacramento, (Moderator)  
Marietess Masulit, Student, Ethnic Studies, California State University, Sacramento  
Chao Vang, Ethnic Studies/Full Circle Project Staff, California State University, Sacramento

**4e. Strategically Planning Your Career:**

**Positioning Yourself for the Next Promotion**

**HILTON HOTEL, MASON I ROOM**

Asian Pacific Americans are underrepresented in leadership positions within higher education institutions. With the retirement of baby boomers and the push for diversifying organizations, the opportunity to fill the leadership gap is tremendous! Human Resources Administrators will discuss key competencies that hiring managers are seeking for executive management positions and discuss how you can attain these skills to prepare you for the next opportunity.

**PRESENTERS:**

Ibrahim “Abe” Ali, Vice Chancellor of Human Resources, Kern Community College District  
Kristina Combs, Executive Director of Human Resources and Labor Relations, College of Marin  
Eric Ramones, Director of Human Resources/Chief Human Resources Officer, Gavilan Joint Community College District (Facilitator)

**4f. TESTED**

**HILTON HOTEL, MASON II ROOM**

Stuyvesant, Bronx Science, Brooklyn Tech: some of NYC’s top ranked public high schools. Each year, thousands of eighth graders compete to secure coveted spots by taking a single test. While blacks and Hispanics constitute 70% of the city’s public school population, they represent only 11% at these schools, with a majority Asian American. This documentary will follow a diverse group of students trying to pass the test, as well as the issues surrounding access to a high-quality public education, affirmative action, and the model-minority myth.

**PRESENTER:**

Curtis Chin, Award-winning Writer, Director and Producer. Chin has written for ABC, NBC, Fox, the Disney Channel and more.

5:00 PM

**APAHE Opening Reception/Raffle  
Recognizing Our Legacy... Legaci**

**HILTON BALLROOM, 3RD FLOOR**

Live Performance and Q&A by Legaci

The New York Times gracefully calls them on a front page feature, “The most visible yet invisible pop figures in the entire world.” Known all over the world as Legaci, these four gentlemen have been wowing audiences with their harmonies and vocal acrobats. Del, Chris, Micah, and C-dac all hail from Northern California and for years shared a passion to make music that moves people; And move people they did. Legaci’s claim to fame was through Youtube. With over 28 million views and counting, it was Legaci’s Youtube channel and their cover of Justin Bieber’s smash hit “Baby” that got Bieber and his manager’s attention. They were asked to tour with Justin and be his official backing group. Since then they’ve performed at over 200 shows across 30 different countries, and appeared in major media outlets including American Idol, Oprah, and Saturday Night Live just to name a few. Legaci is ready to build a Legacy!

**FRIDAY, APRIL 11, 2014**

7:30 AM

**Registration, Continental Breakfast, and  
Networking**

**HILTON HOTEL, 3RD FLOOR**

8:30 AM

**Acknowledgements and Introductions**

**HILTON BALLROOM, 3RD FLOOR**

Arnold Paguio, Student Organization Coordinator, San Francisco State University  
Tomoko Roudebush, Director of Student Activities and Campus Life, Laney College  
Yvonne Wu Craig, Interim Director of Grants, Chabot College

8:45 AM

**APAHE Unveiled: The Importance and  
Significance of a Brand**

**HILTON BALLROOM, 3RD FLOOR**

Gordon Fowler, CEO, 3fold Communications  
Introduction by Vince Sales, Vice President for University Advancement at California State University, Sacramento

9:30 AM

**Having a Seat at the Table**

**HILTON BALLROOM, 3RD FLOOR**

Frank Chong, Ed.D., President/Superintendent, Santa Rosa Junior College (Moderator)  
Sunita V. Cooke, Ph.D., President, Grossmont College  
Ellen Junn, Ph.D., Provost and Vice President, Academic Affairs, California State University, Dominguez Hills  
Rosie Rimando- Chareunsap, Ed.D., Vice President, Student Services, South Seattle Community College  
Van Ton-Quinlivan, Vice Chancellor of Workforce and Economic Development of California’s Community Colleges

10:45 AM

**Networking Break**

**HILTON HOTEL, 2ND AND 3RD FLOORS**



11:00 AM TO 12:00 PM, HILTON HOTEL, 2ND FLOOR  
**CONCURRENT SESSION #1**

**1a. Getting Acquainted: Student to Student**

**HILTON HOTEL, JACKSON ROOM**

This workshop session is an opportunity for undergraduate students from different college and university campuses from across the country to get to know each other and share ideas about what it means to be an Asian American Pacific Islander student. What issues do students face in the classroom, outside the classroom and in the community? What are the support mechanisms that allow you to navigating the issues?

**PRESENTERS:**

Sara Boxell, Program Assistant, Asian American Student Success Program, University of Massachusetts Boston.  
Aida Cuenza-Uvas, Director, Arise Program (AANAPISI Grant), Mt. San Antonio College  
Ula Matavao, Educational Advisor, Arise Program (AANAPISI Grant), Mt. San Antonio College  
Patricia Neilson, Ed.D., Director, Asian American Student Success Program, University of Massachusetts Boston

**1b. Advancing Asian American and Pacific Islander Agenda in Higher Education: Current Efforts and Future Prospects**

**HILTON HOTEL, SANSOME ROOM**

This panel session aims to highlight the power of collaborative work between researchers, practitioners, and institutional leaders to instigate sustainable change for the Asian American and Pacific Islander (AAPI) students in higher education. Two major efforts are the focus of this panel: a partnership with three Asian American, Native American and Pacific Islander-Serving Institutions (AANAPISIs) and an AAPI data disaggregation campaign in collaboration with the California State University's (CSU) AAPI Initiative. Both of these initiatives serve as models of co-investigative research and its potential and success in 1) identifying successful and sustainable interventions to improve AAPI student outcomes; 2) building leverage for access to greater resources, and 3) advancing the AAPI student agenda through institutional and social change.

**PRESENTERS:**

Timothy P. Fong, Ph.D., Professor, Ethnic Studies/Director and Principal Investigator, Full Circle Project, California State University, Sacramento  
Bach Mai Dolly Nguyen, Doctoral Student, Social Science and Comparative Education, University California, Los Angeles  
Robert Teranishi, Ph.D., Professor, Education and Asian American Studies, Principal Investigator-National Commission on AAPI Research in Education, University of California, Los Angeles  
Rowena Tomaneng, Associate Vice President of Instruction, De Anza College

**1c. Healthy Professional Stretches: Going beyond the Norm, Seizing Opportunities, and Building Future Opportunities and Your Personal Legacy**

**HILTON HOTEL, MONTGOMERY ROOM**

What defines a professional stretch and when are these opportunities healthy to be seized? Are there unique leadership challenges for APAs? How can we identify and take full advantage of opportunities to become more effective and successful leaders in higher education? Panelists who influence and guide graduate education at three University of California campuses will share their experiences seizing opportunities and advancing professionally.

**PRESENTERS:**

Samuel H. Bersola, Ph.D., Assistant Vice Provost for Graduate Education, University of California, Los Angeles  
Callale Concon, Assistant Dean, Graduate Division, University of California, Merced  
Richard Shintaku, PhD., Assistant Dean, Graduate Division, University of California, Davis

**1d. Improvise the Moment and Build Your Legacy**

**HILTON HOTEL, WASHINGTON ROOM**

The purpose of this presentation is to share promising practices on how to "seize the moment" in order to:

- communicate positively
- be present
- understand when to lead and follow.

These are fundamentals of improvisation (improv). As API educators, we may have fear and uncertainty with change; learn how to strengthen your leadership, communication style, and self-expression through improv. Practice taking risks by learning improv fundamentals to transform your organization and personal life. This session is highly interactive and participatory.

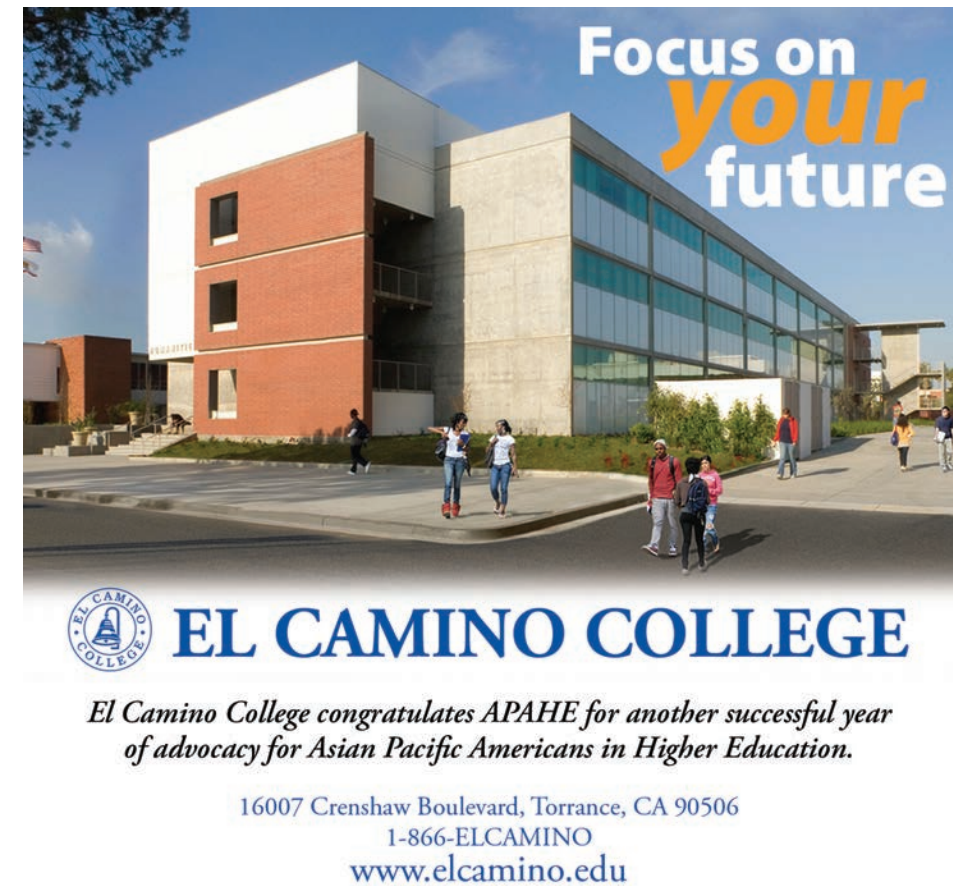
**PRESENTERS:**

Annalyn Cruz, Project Analyst - Student Affairs, Learning & Development, University of California, Berkeley  
Roxanne V. Villaluz, ResAcademic Program Coordinator, Residential & Housing Services, University of California, Berkeley

**1e. An Informal Dialog with Chief Executive Officers/College Presidents (Community College Edition)**

**HILTON HOTEL, MASON I AND II ROOMS COMBINED**

Presidents/CEOs will share their insights, steps, and knowledge on advancing towards leadership in higher education. This session will include small roundtable discussions with one CEO/President at a time. This is your time to ask that question you have always wanted to ask!



**Focus on  
your  
future**

**EL CAMINO COLLEGE**

*El Camino College congratulates APAHE for another successful year of advocacy for Asian Pacific Americans in Higher Education.*

16007 Crenshaw Boulevard, Torrance, CA 90506  
1-866-ELCAMINO  
[www.elcamino.edu](http://www.elcamino.edu)

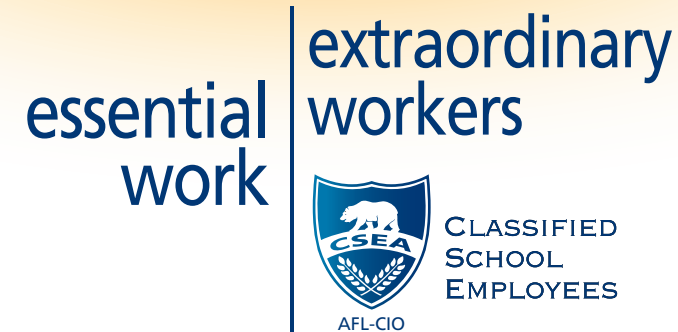


CSU Fullerton, Student Housing Phase III

**We are proud to support APAHE.**

Steinberg Architects  
[www.steinberg.us.com](http://www.steinberg.us.com)





## The Members of California School Employees Association

### Proudly Sponsor the 2014 APAHE Annual Conference

*"Recognizing our legacy...  
Seizing the moment...  
Envisioning our future..."*

CSEA salutes your efforts to enhance and  
promote educational and recruitment opportunities  
for Asian Pacific American students

**Michael Bilbrey**  
Association President

**Dave Low**  
Executive Director

AEU

#### PRESENTERS:

Frank Chong, Ed.D., Superintendent/President,  
Santa Rosa Junior College (Introductions)  
Jannett Jackson, Ph.D., Chancellor, Chabot-Las Positas Community  
College District  
Laurel Jones, Ed.D., Superintendent/President, Cabrillo College,  
Chui Tsang, Ph.D., Superintendent/President, Santa Monica  
College  
Elñora Webb, Ph.D., President, Laney College

#### Poster Session: Mong American Experiences in the U.S. Revisited

##### HILTON HOTEL, 2ND FLOOR LOBBY

Mong Americans are an emerging ethnic group in the U.S. This poster  
presentation will provide an update on two book chapters on the  
experiences of the Mong in the United States edited by Ling (2008) on  
Emerging voices: Experiences of underrepresented Asian Americans.  
The presentation will address Mong Americans' continuing adjustment  
process, social, political, economic, and educational issues and  
challenges, adaptive strategies and status of their progress in the U.S.  
to present.

#### PRESENTER:

Paoze Thao, Ph.D., Professor of Linguistics & Education, California  
State University, Monterey Bay  
Chimeng Yang, Education Consultant, California Department of  
Education

12:00 PM

#### Lunch

##### HILTON BALLROOM, 3RD FLOOR

- Our Voice, Our Future.  
Al Muratsuchi, Assemblymember  
Introduction by Dale Shimasaki, Ph.D., Chief Executive  
Officer, Strategic Education Services
- Asian Americans at a Crossroads: Majority, Minority, Both, or  
Neither?  
Frank Wu, Esq., Chancellor and Dean of the University of  
California, Hastings College of the Law  
Introduction by Audrey Yamagata-Noji, Ph.D., Vice President of  
Student Services, Mt. San Antonio College

1:30 PM

#### Break: Visit Vendors, Tour of Chinese Cultural Center, and Book signing

HILTON BALLROOM, 2ND AND 3RD FLOORS

2:00 PM TO 3:00 PM, HILTON HOTEL, 2ND FLOOR

### CONCURRENT SESSION #2

#### 2a. Open Networking Space

##### HILTON HOTEL, JACKSON ROOM

Space will be provided to attendees with the opportunity to  
network and meet new peers.

#### 2b. Models of Asian American Studies

##### Curriculum, Pt 1

##### HILTON HOTEL, SANSOME ROOM

This is the first of a two-part, student-led panel focusing on  
models of Asian American Studies curriculum, pedagogy, student  
leadership development, and community engagement at UMass  
Boston – an urban, public research university with AANAPISI  
status. Student presenters will share examples of curriculum  
products, research, and reflections relevant to themes of success  
and struggle for low-income Asian American students from  
immigrant/refugee families and communities.

#### PRESENTERS:

Linda Thiem, Graduate Student University of Massachusetts  
Boston  
University of Massachusetts Boston Undergraduate Students:  
Caroline Kim, Komal Patel, Kim Soun Ty

#### 2c. "Now we can stand up to fight for our rights: Critical Asian American Leadership in Our Classrooms and Our Communities"

##### HILTON HOTEL, MONTGOMERY ROOM

This presentation examines APALU: Asian Pacific American  
Leaders United, an AANAPISI-funded program at City College  
of San Francisco. APALU provides opportunities for students to  
develop leadership skills in the classroom, on campus, and the  
community. This presentation will explore challenges, successes,  
lessons learned, and possibilities imagined from the APALU  
program and its students.

#### PRESENTER:

Melissa Canlas, Director, APALU program, and Instructor, Asian  
American Studies, City College of San Francisco

#### 2d. Full Circle Project at Sacramento State:

##### Gathering Institutional Data for Promoting API Student Academic Success

##### HILTON HOTEL, WASHINGTON ROOM

This panel presentation will highlight how the Full Circle Project  
(FCP) at Sacramento State is diligent in gathering data that can  
be used to measure student success and progress, to attract  
funders, and to communicate their stories of success.

PRESENTERS:

Timothy P. Fong, Ph.D., Professor, Ethnic Studies/Director and Principal Investigator, Full Circle Project, California State University, Sacramento  
Vilai Her, Student Organizations & Leadership Assistant; California State University, Sacramento  
Greg Kim-Ju, Ph.D., Professor of Psychology, California State University, Sacramento  
Mai Thuy Nguyen, Student Organizations & Leadership Advisor; California State University, Sacramento  
Paolo Soriano, Academic Counselor, California State University, Sacramento

2e. An Informal Dialog with Chief Executive Officers/College Presidents (University Edition)

HILTON HOTEL, MASON I AND II ROOMS COMBINED

Presidents/CEOs will share their insights, steps, and knowledge on advancing towards leadership in higher education. This session will include small roundtable discussions with one president at a time. This is your time to ask that question you have always wanted to ask a CEO!

PRESENTERS:

Luis Ma. R. Calingo, Ph.D., President, Woodbury University  
A. Gabriel Esteban, Ph.D., President, Seton Hall University  
Alexander Gonzalez, Ph.D., President, California State University, Sacramento  
Leroy Morishita, Ed.D., President, California State University, East Bay (Introductions)

3:15 PM TO 4:15 PM, HILTON HOTEL, 2ND FLOOR  
CONCURRENT SESSION #3

3a. Reducing Educational and Legislative Resources: The Impact on API Subpopulations

HILTON HOTEL, JACKSON ROOM

UCLA has partnered with Advancing Justice Center & DoE to disaggregate API demographic data which gives us a clearer picture of how various factions of the API population are affected by reducing educational and legislative resources. It also helps our community identify the gaps and opportunities to rally support for equity and support for API success.

PRESENTERS:

Mike Eng, Board of Trustee, Los Angeles Community College District  
Nitasha Sawhney, Partner, Garcia, Hernandez, Sawhney & Bermudez LLP (Facilitator)  
Lois Takahashi, Ph.D., Professor, University of California, Los Angeles  
Chui Tsang, Ph.D., Superintendent/President, Santa Monica College

3b. Models of Asian American Studies

Curriculum, Pt 2

HILTON HOTEL, SANSOME ROOM

This is the second of a two-part, student-led panel focusing on models of Asian American Studies curriculum, pedagogy, student leadership development, and community engagement at UMass Boston – an urban, public research university with AANAPISI status. Student presenters will share examples of curriculum products, research, and reflections relevant to themes of success and struggle for low-income Asian American students from immigrant/refugee families and communities.

PRESENTERS:

Joey Nguyen, Graduate Student, University of Massachusetts Boston  
University of Massachusetts Boston Undergraduate Students:  
Huiyan Huang, Cam Van Tran, Ally Yee

3c. The API Student’s Pathway to Leadership & Success

HILTON HOTEL, MONTGOMERY ROOM

Despite the model minority myth and cultural barriers, eight AAPI students currently hold position in California State University, East Bay’s student government, Associated Students Inc. Four of these students will share their struggles of being an AAPI student pursuing higher education. Recognizing that finding their voice, embracing their struggles, receiving support from mentors, and advocating for social justice has led them to student success.

PRESENTER:

Shuaib Amiri, Student, California State University East Bay  
Erik Pinal, Student, California State University East Bay  
Sam Tran, Academic and Career Counselor, California State University East Bay (Facilitator)  
Michelle Xiong, President, California State University East Bay Associated Students Inc.  
Gauzing Yang, Student, California State University, East Bay

3d. Defining the 4 Cs of your Success: Competency, Capability, Capacity and Confidence

HILTON HOTEL, WASHINGTON ROOM

Come join me and other attendees on sharing perspectives on professional development! I want to find out what you know, think, feel and do in building your competence, capability, capacity and confidence in pursuit of your dreams. The four core areas above describe my approach towards my pursuit of excellence within me and the people who surround me. I am working on a paper with a fellow organizational development consultant in expanding this framework within individuals and organizations, and appreciate your participation as to build awareness and intention towards our desired outcomes.



Ohlone College  
is proud to be a partner with  
Asian Pacific Americans in Higher Education


The Ohlone Community College District is a multi-campus single community college district located in the southern portion of the San Francisco Bay in California. Serving almost 18,000 students per year, the District has a main campus in the City of Fremont and a newly constructed campus in the City of Newark.

Visit: [www.ohlone.edu/org/hr/jobs](http://www.ohlone.edu/org/hr/jobs)

A World of Cultures  
United in Learning









LCW LIEBERT CASSIDY WHITMORE

WE ARE PROUD TO SUPPORT  
THE 2014 ASIAN PACIFIC  
AMERICANS IN  
HIGHER EDUCATION  
CONFERENCE

SINCE 1980, WE HAVE PROVIDED LEGAL  
SERVICES IN THE AREAS OF:  
LABOR RELATIONS  
BUSINESS & FACILITIES  
PERSONNEL ISSUES  
STUDENT DISCIPLINE  
LITIGATION  
CAMPUS SAFETY  
SCHOOL ADMINISTRATION  
WAGE & HOUR  
MANAGEMENT TRAINING

FOR MORE INFORMATION, PLEASE VISIT:  
[WWW.LCWLEGAL.COM](http://WWW.LCWLEGAL.COM)

 CalPublicAgencyLaborEmploymentBlog.com |  @LCWLegal  
LOS ANGELES | SAN FRANCISCO | FRESNO | SAN DIEGO

PRESENTER:

Melissa Wong, Financial Analyst, Operational Excellence  
Program Office, University of California, Berkeley

3e. Case Studies of Effective Community

Partnerships

HILTON HOTEL, MASON I AND II ROOMS COMBINED

This panel discussion will showcase the California State University (CSU) Asian American Pacific Islander (AAPI) Initiative as a model for effective community partnerships to raise college awareness and preparation among AAPI students and families. The interactive presentation will include case studies that feature the social and economic diversity within AAPI communities in California; culturally responsive strategies to forge community partnerships; and unique challenges and opportunities of community partnerships.

PRESENTERS:

Mitchell Maki, Ph.D., Vice Provost, California State University, Dominguez Hills  
Leroy Morishita, Ed.D., President, California State University, East Bay  
Mary Ann Takemoto, Ph.D., Interim Vice President for Student Affairs, California State University, Long Beach  
Nancy Wada-McKee, Assistant Vice President for Student Affairs, California State University, Los Angeles

4:30 PM

Closing Raffle and Townhall Discussion: APAHE's Future Agenda

HILTON BALLROOM, 3RD FLOOR

Board of Directors, Asian Pacific Americans in Higher Education

5:30 PM

APAHE Closing Reception (Included with Registration)

THE CHINESE HISTORICAL SOCIETY OF AMERICA MUSEUM

965 CLAY STREET, SAN FRANCISCO, CA 94108

- Music from DJ Halo Effect –Recognized as one of San Francisco's premiere DJs
- Wine and Appetizers

# OPTIONAL APAHE ACTIVITIES

## THURSDAY, APRIL 10, 2014

7:40 AM - 8:25 AM

### Newcomers Orientation

JACKSON ROOM, HILTON HOTEL

The Inaugural Newcomers Orientation will be open to all new APAHE conference attendees who would like to learn about the history of APAHE and how to get involved with the association, optimize your conference experience, and to network with other professionals. Gifts will be provided to first 50 attendees.

2:00 PM OR 2:15 PM

### Chinese Culture Center

HILTON HOTEL, 3RD FLOOR

The Chinese Culture Foundation invites all APAHE conference members to the Chinese Culture Center for tours of our latest exhibition, Between Modern and Contemporary. Our gallery is dedicated to showcasing innovative and risk-taking artists and artwork. This exhibition gives tribute to a Taiwanese artist who is a pioneer in abstract painting, and one of the first to adopt these techniques. The Chinese Culture Foundation was founded during the Civil Rights era in 1965 and operates the Chinese Culture Center as its main program site. We are dedicated to spark discovery through art, education and engagement. Tour (15 minutes) of the latest exhibition, between Modern and Contemporary. Gallery will be open during the conference from 10:00 AM to 4:00 PM.

5:00 PM - 7:00 PM

### Opening APAHE Reception

HILTON BALLROOM, 3RD FLOOR

Join us at our Opening Reception to network and relax!

Legaci - Known all over the world as Legaci, these four gentlemen have been wowing audiences with their harmonies and vocal acrobatics. Over 25 million views on Youtube, they've performed at over 200 shows across 30 different countries, and appeared in major media outlets including American Idol, Oprah, and Saturday Night Live just to name a few. (5:30 PM)

Infamous APAHE Raffle – hosted by WACK:

Wyman Fong, Abe Ali, Corey Gin, and Ketmani Kouanchao

Selection of Appetizers

6:45 PM - 7:30 PM

### Gold Rush! Capture and Discover the Treasures of San Francisco Chinatown

HILTON HOTEL LOBBY

Come and join us in discovering the hidden treasures of a historical neighborhood of San Francisco. Complete a photo challenge with other APAHE attendees and discover the significance of unique landmarks scattered throughout the Chinatown District. Please drop off your business card in the fish bowl at the registration table if you would like to participate. Meet in front of hotel lobby at 6:45 PM.

7:30 PM - 9:15 PM

### Networking Dinner

KING OF THAI NOODLE HOUSE

1268 GRANT AVE

Please join us for dinner and get a chance to continue meeting and mingle with other professionals in the field, while enjoying a delicious dinner. No host dinner. Please sign up at the registration table. Meet in front of lobby at 7:30 PM.

9:30 PM

### After hours Networking

LI PO COCKTAIL LOUNGE

916 GRANT AVE

Come out and experience San Francisco nightlife, while enjoying the company of other APAHE attendees. Please bring your business card.

## FRIDAY, APRIL 11, 2014

1:30 PM OR 1:45 PM

### Chinese Culture Center

HILTON HOTEL, 3RD FLOOR

The Chinese Culture Foundation invites all APAHE conference members to the Chinese Culture Center for tours of our latest exhibition, Between Modern and Contemporary. Our

gallery is dedicated to showcasing innovative and risk-taking artists and artwork. This exhibition gives tribute to a Taiwanese artist who is a pioneer in abstract painting, and one of the first to adopt these techniques. The Chinese Culture Foundation was founded during the Civil Rights era in 1965 and operates the Chinese Culture Center as its main program site. We are dedicated to spark discovery through art, education and engagement. Tour (15 minutes) of the latest exhibition, between Modern and Contemporary. Gallery will be open during the conference from 10:00 AM to 4:00 PM.

5:30 PM - 7:30 PM

### Closing APAHE Reception

CHINESE HISTORICAL SOCIETY OF AMERICA MUSEUM

965 CLAY STREET (8-10 MINUTE WALK UPHIL IN CHINATOWN)

Music from DJ Halo Effect –Recognized as one of San Francisco's premiere DJs, DJ Halo Effect (James Lau) hails from the foggy city.

Wine and Appetizers

Closing Announcements



Keenan & Associates  
is a proud sponsor of

## Asian Pacific Americans in Higher Education 2014 Conference

Since 1972, Keenan & Associates has delivered innovative insurance brokerage, consulting and claim services to California Community Colleges.

✉ For more information, contact Bob Schoenherr  
bschoenherr@keenand.com or Tim Keenan tkeenan2@keenand.com.

*Keenan*  
Associates

License No. 0451271

*Innovative Solutions. Enduring Principles.*

www.keenan.com





EOE

## san josé·evergreen COMMUNITY COLLEGE DISTRICT

The San Jose/Evergreen Community College District consists of two colleges. The metropolitan San Jose City College located just minutes from downtown San Jose, established in 1921, and the park-like Evergreen Valley College located in southeast San Jose at the foot of the Diablo Mountain range, which opened in 1975. Currently, we are hiring for the following full-time tenure-track positions:

### EVERGREEN VALLEY COLLEGE

**Instructor, Nursing**

### SAN JOSE CITY COLLEGE

**Counselor, General**

**Counselor, Student Success**

**Counselor, Disabled Students Program & Services**

For full job announcements, deadlines and to apply, visit:

**<http://apptrkr.com/448118>**

*San Jose/Evergreen Community College District is an  
Equal Opportunity Employer*

# GENERAL INFORMATION

#### AIRPORT INFORMATION

The San Francisco International Airport is served by most major airlines. It is approximately 20 minutes from the Hilton San Francisco Financial District.

#### TAXI

A Taxi back to the SFO Airport is approximately \$45-50. The Hilton Concierge staff can help guest secure a taxi back to the airport.

#### SHUTTLE

The Hilton recommends "Go Lorries" shuttle service. Shuttles leave the Hilton every 30 minutes. The Hilton Concierge staff can help guest secure a shuttle back to the airport.

#### RESTAURANTS

**A Enjoy Vegetarian Restaurant**

839 KEARNY STREET  
415.956.7868

Complimentary rice and spring roll (both for lunch, one for dinner)

**B Golden Star Vietnamese Restaurant**

11 WALTER U. LUM PLACE  
415.398.1215

Buy 10 lunch/dinner get one free

**C King of Thai Noodle House**

1268 GRANT AVENUE  
415.279.6385

**D Oolong Noodles Restaurant**

646 WASHINGTON STREET  
415.819.5668

\*10% discount and free appetizer when you show your APAHE badge\*

**E Penang Garden Restaurant** (Thai, Singaporean, Malaysian, 0.1 miles)

728 WASHINGTON STREET (@ WALTER U. LUM PLACE)  
415.296.7878

**F R and G Lounge**

631 KEARNY ST.  
415.982.7877

Present APAHE badge for discounts applicable as noted

#### NEARBY DESSERTS/BAKERIES AND DRINKS

**G Golden Gate Bakery**

1029 GRANT AVENUE  
415.781.2627

Known for their egg custards

**H Eastern Bakery**

720 GRANT AVENUE  
415.982.5157

**I Cool Tea Bar**

728 PACIFIC AVENUE  
415.781.8312

**J The Hidden Vine**

408 MERCHANT STREET  
415.674.3567

#### PIER 39

Regarded as the number one attraction in San Francisco, Pier 39 is bustling with activity. Enjoy over 100 stores and a dozen restaurants featuring great food and even greater views of the bay. Sea lions and street performers give Pier 39 a real carnival atmosphere. [www.pier39.com](http://www.pier39.com)

#### UNION SQUARE

The hub of shopping, dining, and entertainment in San Francisco, Union Square is filled with everything from massive malls and unique boutiques to art galleries and theatres. In addition, you can enjoy a phenomenal meal in an upscale restaurant or a hot dog from a vendor. You can even hop on a cable car and ride it halfway to the stars. [www.unionsquashop.com](http://www.unionsquashop.com)





# KEY 2014 PRESENTERS



**LUIS MA R. CALINGO**

Luis Ma. R. Calingo, Ph.D., serves as president of Woodbury University. Dr. Calingo joined Woodbury from Dominican University, where he was Executive Vice President and Chief Academic Officer. Dr. Calingo previously served as Dean of the Boler School of Business at John Carroll University in Cleveland. Prior to Boler, Dr. Calingo was Dean of the College of Business Administration and Professor of International Business at California State University, Long Beach and past Chair of the California State University Association of Business Deans, which coordinates the academic leadership initiatives of the 23 business schools in the CSU System.

Dr. Calingo holds a Ph.D. from the University of Pittsburgh, an MBA from the University of Pittsburgh, a Master of Urban and Regional Planning from the University of the Philippines, and a B.S. in Industrial Engineering from the University of the Philippines. He has served as a member of the Board of Examiners of the Malcolm Baldrige National Quality Award, the country's highest award for quality and performance excellence, since 1997.

An international expert in strategic planning and quality management, Dr. Calingo has assisted the governments of Indonesia, Mongolia, Pakistan, the Philippines, Sri Lanka, Thailand, and Vietnam on the establishment and implementation of their Baldrige-based national awards for quality and business excellence as well as the infusion of quality assurance into their higher education systems.



**FRANK CHONG**

Frank Chong, Ed.D., was appointed by the Santa Rosa Junior College Board as its new superintendent/president effective January 2012. Dr. Chong became the fifth superintendent/president of the school in its 93rd -year history.

Prior to joining Santa Rosa Junior College as superintendent/president in January 2012, Dr. Chong served as the Deputy Assistant Secretary for Community Colleges at the United States Department of Education in Washington, D.C. Among his key responsibilities at the Dept. of Education were shaping President Barack Obama's community college agenda, providing leadership in the development of the Trade Adjustment Assistance Act and developing policies related to the President's college completion goal.

From 2006 to 2009, he was President of Laney College in Oakland, and served as President of Mission College in Santa Clara from 2003 to 2006. Chong was Dean of Student Affairs at San Francisco City College from 1993 to 2003. He served as special assistant to Willie Brown, speaker of the California Assembly, from 1987 to 1991, and in that position created legislation in higher education, mental health, small and minority business affairs and local government.

Congratulations to APAHE on its 2014 national conference "RECOGNIZING OUR LEGACY... SEIZING THE MOMENT... ENVISIONING OUR FUTURE..."



## ASIAN AMERICAN STUDENT SUCCESS PROGRAM

The Asian American Student Success Program (AASSP) at the University of Massachusetts Boston is an academic support program that promotes college access and persistence among Asian American students by integrating the educational, cultural, and linguistic resources of faculty, staff, students, families, and local communities. The program especially aims to assist low-income and/or first generation college-goers and traditionally underrepresented Asian American ethnic populations.

Learn more at [www.umb.edu/academics/vpass/aassp](http://www.umb.edu/academics/vpass/aassp)

The University of Massachusetts Boston is federally recognized as a Minority Serving Institution (MSI) through its designation as an Asian American Native American Pacific Islander Serving Institution (AANAPISI), funded by the U.S. Department of Education.







Anticipating great success for APAHE in 2014 as it Recognizes its Legacy, Seizes the Moment, and Envisions its Future.

**Chabot College**  
25555 Hesperian Boulevard  
Hayward, CA 94545  
[www.chabotcollege.edu](http://www.chabotcollege.edu)

**Las Positas College**  
3000 Campus Hill Drive  
Livermore, CA 94551  
[www.laspositascollege.edu](http://www.laspositascollege.edu)



#### SUNITA V. COOKE

Dr. Sunita "Sunny" Cooke became president of Grossmont College, located in El Cajon, California, in July 2007. With over 20,000 students, Grossmont College, founded in 1961, is one of the two community colleges in Grossmont Cuyamaca Community College District offering more than 150 associate degree programs and career and certificate programs.

Prior to joining Grossmont, Dr. Cooke spent 12 years with the five-college North Harris Montgomery Community College District in North Houston, Texas. Her last two years in Texas she served as associate vice chancellor for workforce development. Throughout her career, from teaching biology as a graduate student at Georgetown University, to Dean of the Montgomery College's Natural Sciences and Health Professions, Dr. Cooke has earned a reputation as an innovator and motivator in key leadership roles that involved defining new positions and structures within a college or district and developing new continuing education opportunities, funding sources or corporate training programs.

After completing her doctorate at Georgetown University, she completed a postdoctoral training program at M.D. Anderson Cancer Center



#### A. GABRIEL ESTEBAN

A. Gabriel Esteban, Ph.D., made news when he was named President of Seton Hall University in early 2011. He was the first Filipino to become president of a major American university and Seton Hall's first lay president in decades.

Prior to his current post, Gabriel served as Provost at Seton Hall University in August 2007. Dr. Esteban also served as Provost and Dean of Faculty at The University of Central Arkansas. He was associate vice president of academic affairs at Arkansas Tech University and an assistant professor at the University of Houston-Victoria. Dr. Esteban was also a full-time instructor at the College of Business Administration of the University of the Philippines.



#### GORDON FOWLER

Gordon Fowler is the President/CEO of 3fold Communications, an award-winning strategic integrated marketing firm in Sacramento, CA. A true entrepreneur, Gordon launched 3fold with a goal of providing integrated marketing and advertising services differently, including: smart creative, solutions-oriented strategy, and deeper, collaborative partnership with clients.

And it worked. From 3fold's first client in 2004 through today, clients have responded to a creative, problem-solving, personalized approach to their marketing and outreach needs.

Over the past 10 years, 3fold Communications has become one of Sacramento's fastest growing creative firms. They have worked with over 200 clients nationwide and built a strong reputation for successfully helping bold brands connect their products and services to their consumers with smart and creative campaigns that are noticed in a new and refreshing way.

Under Gordon's leadership, 3fold Communications has won numerous industry, business and philanthropy awards (we wouldn't want to waste your time reading that here-but go to our website where you can spend hours reading through our shameless self-promotion!)

In addition to building one of the strongest and most creative teams in the region, Gordon has built an agency that includes community leadership and service as part of its central mission. Members of the 3fold team currently serve on 25 nonprofit or community boards, 11 advisory committees and have donated more than \$200,000 per year in pro bono PR, marketing and consulting services to nonprofit and community-based organizations.





### ALEXANDER GONZALEZ

Alexander Gonzalez, Ph.D., has served more than three decades as a professor and education leader, including the last decade as the 11th president of California State University, Sacramento, one of the largest universities in the California State University 23-campus system. Prior to his appointment to California State University, Sacramento, Dr. Gonzalez served from 1997 to 2003 as president of California State University, San Marcos, where he made sweeping changes. Before leading San Marcos, he served for 18 years at Fresno State first as faculty and chair in the Psychology Department before becoming provost and vice president for Academic Affairs from 1991-1997.

A native Californian and the first person in his family to graduate from college, Dr. Gonzalez has devoted his career to ensuring greater opportunities for students. Dr. Gonzalez holds a master's degree and doctorate in psychology from UC Santa Cruz. He received his bachelor's degree in history from Pomona College, where he graduated with honors and was elected to Phi Beta Kappa. He spent a year at Stanford University as a postdoctoral fellow of the Ford Foundation and the National Research Council conducting research on the psychology of time. He also attended Harvard Law School and served in the United States Air Force.

Dr. Gonzalez serves as a board member of Valley Vision, an organization committed to improving the Sacramento Region. His previous service to the community includes the boards of directors for Sutter Health and the Crocker Art Museum. Dr. Gonzalez also currently serves as a Director of the National Endowment for Financial Education (NEFE). Additional past service includes an appointment by Gov. Arnold Schwarzenegger to the California Student Aid Commission and six years as a commissioner for the Western Association of Schools and Colleges – the accrediting agency for higher education institutions in California and Hawaii. He also was chair of the Governing Board of the Hispanic Association of Colleges and Universities and was a member of the President's Advisory Commission on Educational Excellence for Hispanic Americans.



### PATRICK HAYASHI

Pat began his career at UC Berkeley in 1966 as a campus mail carrier. He later worked in budget, accounting, contracts and grants and personnel. In 1969 he began teaching freshman writing in the new Asian American Studies program. He served as head of the program from 1971-73 and appointed Ron Takaki as the program's first tenured professor. In 1973, he left Berkeley for Sendai, Japan where he studied educational sociology at Tohoku University. He returned to Berkeley and earned his master's and doctoral degrees in public policy.

In 1984, at the age of forty, he restarted his career as an analyst in student services and head of student conduct. In 1986, he was appointed special assistant to Chancellor Michael Heyman. In 1988, in the midst of a bitter controversy over Asian American admissions, Chancellor Heyman appointed him associate vice chancellor for admissions and enrollment. With that appointment, he became the highest ranking API administrator in the UC system. While overseeing admissions, he initiated Berkeley's move to adopt holistic review procedures and to view applicants as more than the sum of their grades and test scores.

In 1999, Pat joined UC's Office of the President where he served as associate president under President Richard Atkinson. He was chief architect of Atkinson's challenge to the SAT. During that time, he also served as a trustee of the College Board, which administers the SAT program, and tried to convince the Board to sever its ties with the National Merit Scholarship Program on the grounds that it advanced a fraudulent, indefensible concept of merit that unfairly discriminated against students of color and disadvantaged students. After failing to persuade the College Board, he initiated a campaign at UC that, in 2005, led all UC campuses to drop out of the program. He remains a staunch critic of standardized college admissions tests.

After retiring in 2004, Pat took up art. At the invitation of the US State Department, last October, he travelled to Kyrgyzstan to give lectures on the Japanese American concentration camps and master classes at art colleges on how to paint with smoke, a medium he discovered by accident while nearly setting his kitchen ablaze. (You can see work at PATRICKHAYASHI.com) He has also started singing lessons and theoretically goes to CrossFit three times a week.



## Kern Community College District is proud to be a sponsor of Asian Pacific Americans in Higher Education



**Kern Community College District (KCCD) serves communities over 24,800 square miles in parts of Kern, Tulare, Inyo, Mono, and San Bernardino counties through the programs of Bakersfield College, Cerro Coso College and Porterville College. Governed by a locally elected Board of Trustees, the district's colleges offer programs and services that develop student potential and create opportunities for our citizens.**

[www.kccd.edu](http://www.kccd.edu)



CALIFORNIA STATE UNIVERSITY, SACRAMENTO



RECOGNIZING OUR LEGACY, SEIZING THE MOMENT, ENVISIONING OUR FUTURE

# Congratulations APAHE

**Sacramento State is home to:**

Asian Pacific Islander American Research Center  
The Honorable Robert T. Matsui Legacy Project  
Full Circle Project  
The Japanese American Archival Collection  
Sokiku Nakatani Tea Room and Garden  
Frank Fat Collection  
Wayne Maeda Asian American Studies Archives

**csus.edu**



**SACRAMENTO  
STATE**

*Redefine the Possible*

JOIN THE CONVERSATION » Log on for the latest Sac State updates | **csus.edu**



## LAUREL JONES

Laurel Jones, Ed.D., currently serves as superintendent/president of Cabrillo College. Dr. Jones, former president of Santa Clara's Mission College, became the first female president in Cabrillo's 54-year history. Dr. Jones also served as vice president of academic services at Las Positas College in Livermore, vice president of academic affairs at Solano College, dean of instruction at Mount San Jacinto College in Riverside County and an instructor at Mount San Antonio College in Walnut.

Dr. Jones earned a bachelor's degree in English from Taylor University in Upland, Ind., a master's degree in English from Cal State Fullerton and a doctorate in educational leadership from the University of La Verne. She's also a graduate of the Advanced Future Leader's Institute offered through the American Association of Community Colleges.



## ELLEN JUNN

Ellen Junn, Ph.D., currently serves as Provost and Vice President for Academic Affairs, California State University, Dominguez Hills.

Twenty-seven of Junn's 30 years of experience in higher education have been within the CSU system, most recently as Provost and Vice President for Academic Affairs at San José State University (SJSU). Her many accomplishments at SJSU include a refocusing of the campus' graduation rate initiative, the creation of a new undergraduate research initiative, the inception of the university's academic plan through 2017, the establishment of departmental grants designed to improve student success, retention, and graduation rates, and support innovation in teaching and learning, and the support of new technologies in facilitating student learning.



## JANNETT N. JACKSON

The Board of Trustees of the Chabot-Las Positas Community College District appointed Jannett N. Jackson, Ph.D., to the position of chancellor effective July 2013.

As Chancellor, she filled the top vacancy in the district which operates Chabot College in Hayward and Las Positas College in Livermore. The two colleges together serve more than 26,000 students in the East Bay Area. She became the fifth chancellor and the first African American chancellor to lead the district.

Dr. Jackson, served as president of College of Alameda (COA) Peralta Community College District. Prior to her presidency, Dr. Jackson was vice president of instruction at COA and an instructional dean at Fresno City College.

Dr. Jackson received her doctorate in Educational Administration at The University of Texas at Austin, and holds a Master's in Education emphasis in Curriculum and Instruction and a Bachelor of Arts in Liberal Studies from California State University, Fresno.



## LEGACI

The New York Times gracefully calls them on a front page feature, "The most visible yet invisible pop figures in the entire world."

Known all over the world as Legaci, these four gentlemen have been wowing audiences with their harmonies and vocal acrobats. Del, Chris, Micah, and C-dac all hail from Northern California and for years shared a passion to make music that moves people – and move people they did.

Legaci's claim to fame was through Youtube. With over 28 million views and counting, it was Legaci's Youtube channel and their cover of Justin Bieber's smash hit "Baby" that got Bieber and his manager's attention. They were asked to tour with Justin Bieber and be his official backing group. Since then they have performed at over 200 shows across 30 different countries, and appeared in major media outlets including American Idol, Oprah, and Saturday Night Live just to name a few. Legaci is ready to build a Legacy!





## LEROY M. MORISHITA

Leroy Morishita, Ed.D., currently serves as President of California State University, East Bay. He arrived at Cal State East Bay from San Francisco State University, where he served as Executive Vice President for Administration and Finance and Chief Financial Officer. Dr. Morishita has more than 30 years of experience in higher education as an educator and administrator. He first worked in the California State University system from 1978 to 1981 as counseling coordinator and counselor for the Educational Opportunity Program at San Francisco State University.

Dr. Morishita has been a commissioner of the Western Association for Senior Colleges and Universities since 2007, and chair of its Finance & Operations Committee since 2010.



## ROSIE RIMANDO-CHAREUNSAP

Rosie Rimando-Chareunsap currently serves as the Vice President for Student Services at South Seattle Community College, where she began her higher education career in 2000 working in pre-college TRiO programs, Educational Talent Search and Upward Bound. Keeping her heart and professional values firmly rooted in TRiO and in serving underrepresented populations, she has also served the college and the community in leadership roles in Outreach and Admissions, student success initiatives including a Title III grant project, and with the college's first AANAPISI (Asian American Native American Pacific Islander Serving Institution) grants and designations. Rosie earned her Bachelor degrees in English and Comparative American Cultures from Washington State University (WSU), a Master of Public Administration from University of Washington, and a Doctorate of Education in Higher Education Administration back at WSU.



## AL MURATSUCHI

Assemblymember Al Muratsuchi served as a prosecutor and a school board member before he was elected in November of 2012 to represent California's 66th Assembly District, which includes the cities of Gardena, Hermosa Beach, Lomita, the Los Angeles communities of Harbor City and Harbor Gateway, Manhattan Beach, Palos Verdes Estates, Rancho Palos Verdes, Redondo Beach, Rolling Hills, Rolling Hills Estates, Torrance and the unincorporated communities of El Camino Village and West Carson.

Muratsuchi served as a prosecutor and Deputy Attorney General with the California Department of Justice for over eleven years. Prior to joining the Department of Justice in 2001, he was a prosecutor with the Los Angeles County District Attorney's Office and the Santa Ana City Attorney's Office. Muratsuchi also served as a Torrance Unified School Board member for over seven years. As School Board President, Muratsuchi played a key role in initiating the largest school repair and modernization program in the district's history.

Assemblymember Muratsuchi is a graduate of the University of California, Berkeley and the UCLA School of Law, and an alumnus of the Coro Foundation Public Affairs Fellows Program.

# EDUCATION *that* TRANSFORMS

At **California State University, East Bay**, our mission is to be a model for regionally engaged learning in the 21st century.

Cal State East Bay continues to serve as an innovative and creative leader in public higher education, providing students with a unique educational experience. That experience enables them to respond to the needs of our communities and it prepares them for success – regionally, nationally, and globally.



**Go Pioneers!**



CALIFORNIA STATE  
UNIVERSITY  
EAST BAY

25800 Carlos Bee Boulevard  
Hayward, CA 94542  
www.csueastbay.edu • (510) 885-3724





## Connecting Community Colleges for a Strong California

### PROMOTE

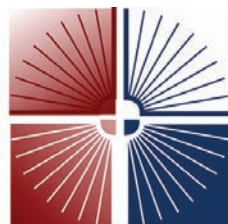
effective leadership at all levels for  
community colleges

### ADVANCE

as the primary advocacy organization for  
community college districts

### DELIVER

outstanding services and programs that  
engage districts and support their operations



**COMMUNITY COLLEGE LEAGUE  
OF CALIFORNIA**

For more information about the  
Community College League of California,  
visit us at [www.ccleague.org](http://www.ccleague.org) or call (916) 444-8641.



### VAN TON-QUINLIVAN

Van Ton-Quinlivan was named a “White House Champion of Change” in her capacity as Vice Chancellor of Workforce and Economic Development of California’s Community Colleges. This Division administers state and federal funding applied to the career education mission across the system’s 112 community colleges. Appointed by Governor Jerry Brown in 2011, her leadership focus is on Doing What Matters for Jobs and the Economy.

Ton-Quinlivan came to this position as a recognized thought leader in the energy and utility industry on the issue of workforce development. While Director of Workforce Development at Pacific Gas & Electric (PG&E), she architected PowerPathway™, a nationally recognized best practice model program in workforce development.



### CHUI L. TSANG

Chui L. Tsang, Ph.D., currently serves as superintendent/president of Santa Monica College. Santa Monica College is a premier public community college with approximately 30,000 students. Prior to coming to Santa Monica College, Dr. Tsang served as president of San Jose City College for nearly nine years. Prior to his post at San Jose, he served as a dean at the City College of San Francisco and as Executive Director of Career Resources Development Center, a vocational training and employment agency approved by the California State Department of Education.

Dr. Tsang attended Contra Costa College, a two-year campus in the East San Francisco Bay Area, transferring to UC Berkeley to earn his B.A. degree in linguistics in 1975. He received his Ph.D. in linguistics from Stanford in 1981 and is published in the fields of linguistics, education and workforce training.

His awards include Union Bank of California’s Local Hero Award and U.S. Department of Labor honors for his work in workforce and economic development



### ELÑORA T. WEBB

Elñora Tena Webb, Ph.D., serves as president of Laney College, which is located in downtown Oakland, California, and the College is the flagship of the Peralta Community College District, which serves up to 30,000 students. Prior to her appointment as president, Dr. Webb served as Vice President of Instruction and Dean of Humanities, Language Arts & Social Sciences at Laney College.

Dr. Webb serves in several other leadership capacities, including as a member of the American Association of Community Colleges’ (AACC) Commission on Global Education, the Community College League of California’s CEO Board of Directors and as faculty with the University of California at Berkeley’s Executive Leadership Academy.

Dr. Webb was a member of the Community College Leadership program at the University of California at Berkeley and completed her Ph.D. in Education with emphasis in Higher Education Administration/Policy. She also completed all coursework in the Organizational Behavior and Industrial Relations Ph.D. program of the Haas School of Business. She received her Master’s degree in Educational Administration from San Francisco State University and Bachelor’s of Arts degree in Liberal Studies with emphasis in Psychology & Education from the University of California at Riverside.

Her ability to navigate through tough and complex challenges has led to recognition by members of the California Legislature and State Senate with the 2011 Community Hero Award.





### LESLIE E. WONG

Leslie E. Wong, Ph.D., joined San Francisco State University as its 13th president in August of 2012. He oversees one of the nation's premier urban comprehensive universities offering baccalaureate degrees in 123 academic areas; 27 credential programs; 35 certificate programs; 62 master's degrees; and 4 doctoral degrees. He leads more than 3,000 faculty and staff as they serve a student population of over 30,000.

Early in his career he had faculty appointments at Pierce College and Evergreen State College in Washington State. He served six years as academic dean of Evergreen State College before accepting an appointment as Provost and Academic Vice President at the University of Southern Colorado. He also served as interim president at the University of Southern Colorado. In 1999, Dr. Wong accepted an appointment as vice president for academic affairs at Valley City State University in North Dakota. In 2004, Dr. Wong was appointed president of Northern Michigan University. While at NMU, Dr. Wong's leadership in bringing technology to rural areas led to visits by President George W. Bush and President Barack Obama.

Dr. Wong holds a bachelor's degree in Psychology from Gonzaga University, a master's degree in Experimental Psychology from Eastern Washington University, and a Ph.D. in Educational Psychology from Washington State University.



### FRANK WU

Frank H. Wu is in his fourth year of service as Chancellor and Dean of University of California Hastings College of Law. He was a member of the faculty at Howard University, the nation's leading historically black college/university, for a decade.

He is the author of *Yellow: Race in America Beyond Black and White*, which was immediately reprinted in its hardcover edition, and co-author of *Race, Rights and Reparation: Law and the Japanese American Internment*, which received a major grant from the Civil Liberties Public Education Fund.

Prior to his academic career, he held a clerkship with the late U.S. District Judge Frank J. Battisti in Cleveland and practiced law with the firm of Morrison & Foerster in San Francisco – while there, [where he devoted a quarter of this time to pro bono work on behalf he devoted a quarter of his time to pro bono work on behalf of indigent clients. He received a B.A. from the Johns Hopkins University and a J.D. from the University of Michigan.



The College Board is working with members to help propel students forward into the opportunities they have earned by encouraging students to engage in academic rigor during high school and helping them navigate the college-going process.

We are also redesigning the SAT® so it is more useful for college admissions, more focused for K–12 teachers, and clearer for students. The redesigned SAT will closely reflect the skills and knowledge that research shows are essential for college readiness and success.

THE REDESIGNED SAT WILL BE ADMINISTERED FOR THE FIRST TIME IN SPRING 2016.

Go to [deliveringopportunity.org](http://deliveringopportunity.org) for detailed information on:

- ▶ Changes to the SAT and scores
- ▶ Maintaining and supporting predictive validity, concordance, and implementation
- ▶ Resources for communicating with colleagues, students, and parents

For more information visit:  
[www.deliveringopportunity.org](http://www.deliveringopportunity.org)

SAT®

©2014 The College Board



# SPECIAL THANKS

**LINDA AKUTAGAWA**, CEO and President, Leadership Education for Asian Pacifics, Inc. (LEAP)

**ASIAN PACIFIC AMERICAN SYSTEMWIDE ALLIANCE (APASA), UNIVERSITY OF CALIFORNIA, BERKELEY**

**DR. HELEN BENJAMIN**, Chancellor, Contra Costa Community College District

**GORDON FOWLER**, CEO and President, 3fold Communications

**HENRY GEE**, Vice President, Student Services, Rio Hondo College

**DR. ALEXANDER GONZALEZ**, President, California State University, Sacramento

**DR. PATRICK HAYASHI**, Artist, Community Activist and former Associate President of the University of California System

**E. EDWARD KLOTZBIER**, Vice President, New England Regional Office, The College Board

**JENNY S. KWON**, Assistant Director, Staff Diversity Initiatives, University of California, Berkeley

**DANIELLE LAM**, Board of Directors, Chinese Historical Society of America

**ELSIE LAM**, 1st Vice President, Board of Directors, Chinese Historical Society of America

**SCOTT LAY**, President and Chief Executive Officer, Community College League of California

**JENNY LEUNG**, Program and Exhibition Manager, Chinese Culture Foundation of San Francisco

**TIM LEONG**, Director, Communications and Community Relations, Contra Costa Community College District

**JIM MONTOYA**, Vice President, Higher Education, The College Board

**ROD SANTOS**, Residence Affairs Supervisor, University of California, Berkeley

**SANDRA V. SERRANO**, Chancellor, Kern Community College District

**KIMI SHIGETANI**, Vice President, Community College League of California

**DR. DALE SHIMASAKI**, Chief Executive Officer of Strategic Education Services

**GRACE TOY**, Sr. VP of Administration and CFO, Leadership Education for Asian Pacifics, Inc. (LEAP)

**DR. CHUI L. TSANG**, Superintendent/President, Santa Monica College

**DR. KEVIN G. WALTHERS**, President, Allan Hancock College

**DR. ELÑORA WEBB**, President, Laney College



## HELEN ZIA

Helen Zia is an award-winning journalist and scholar who has covered Asian American communities and social and political movements for decades. She is the author of *Asian American Dreams: The Emergence of an American People*, a finalist for the prestigious Kiriya Pacific Rim Book Prize.

She is also co-author, with Wen Ho Lee, of *My Country Versus Me*, which reveals what happened to the Los Alamos scientist who was falsely accused of being a spy for China in the “worst case since the Rosenbergs.”

Zia is former Executive Editor of *Ms. Magazine*. Her articles, essays and reviews have appeared in numerous publications, books and anthologies. She was named one of the most influential Asian Americans of the decade by *A. Magazine*. Zia has received numerous journalism awards for her ground-breaking stories.

Zia has been outspoken on issues ranging from civil rights and peace to women’s rights and countering hate violence and homophobia. In 1997, she testified before the U.S. Commission on Civil Rights on the racial impact of the news media. She traveled to Beijing in 1995 to the UN Fourth World Congress on Women as part of a journalists of color delegation. She has appeared in numerous news programs and films; her work on the 1980s Asian American landmark civil rights case of anti-Asian violence is documented in the Academy Award nominated film, “Who Killed Vincent Chin?” and she was profiled in Bill Moyers’ PBS documentary, “Becoming American: The Chinese Experience.”

Zia is a distinguished research fellow at the University of British Columbia and the Chinese university of Hong Kong. She received an honorary Doctor of Laws degree from the Law School of the City University of New York for bringing important matters of law and civil rights into public view. She is a graduate of Princeton University’s first graduating class of women. She quit medical school after completing two years, then went to work as a construction laborer, an auto worker, and a community organizer, after which she discovered her life’s work as a writer.



# CONFERENCE SPONSORS

With special appreciation to  
**THE COLLEGE BOARD**  
and  
**THE COMMUNITY COLLEGE LEAGUE OF CALIFORNIA**  
For their Platinum sponsorship of the APAHE Conference

## GOLD SPONSORS

California State University, Sacramento  
Keenan and Associates  
Mt. San Antonio College  
PiperJaffrey

## SILVER SPONSORS

Atkinson, Andelson, Loya, Ruud & Romo  
California State Employees Association  
Contra Costa Community College District  
De Anza College  
Kern Community College District  
Santa Monica College  
Steinberg Architects

## OTHER CONTRIBUTORS

O3 Bistro & Lounge  
3fold Communications  
Association of California Community College Administrators  
Chabot-Las Positas Community College District  
Chinese Culture Foundation of San Francisco  
Chinese Historical Society of America

## EXHIBITORS

Asian American Curriculum Project, Inc.  
Asians and Pacific Islanders with Disabilities of California  
Association of California Community College Administrators  
Claremont Graduate University  
Focal Points Design – Custom Jewelry and Accessories by Linda Handy  
Fulbright Scholar Program (Institute of International Education/Council for International Exchange of Scholars)  
Leadership Education for Asian Pacifics (LEAP)  
Maricopa Community Colleges  
National University

# PLANNING COMMITTEE

## CONFERENCE PLANNING COMMITTEE CHAIRS

Arnold Paguio, Student Organization Coordinator, San Francisco State University  
Tomoko Roudebush, Director of Student Activities and Campus Life, Laney College  
Yvonne Wu Craig, Interim Director of Grants, Chabot College

## MARKETING/DEVELOPMENT

Johnny Lai, Marketing Coordinator, Cal Poly Pomona (Chair)  
Erick Aragon, Counselor/Coordinator: Student Success and Support Program, Laney College and Counselor, IMPACT AAPI, De Anza College

## OUTREACH

Mai Nguyen, Program Advisor, Student Organization and Leadership, California State University, Sacramento (Chair)  
Carlos Gonzales, Student Services Advanced Specialist. Department, Workforce & Business Development, Pima Community College  
Ketmani Kouanchao, Ed.D., Director, Mt. San Jacinto College  
Trang Luong, Counselor, Trio Program, Laney College  
Christel Mikami, Membership Coordinator, Association of California Community College  
Vanson Nguyen, Math Instructor, College of Alameda  
Elaine Reodica, Program Manager, Community College League of California; John Salangsang, Internship Specialist, San Jose State University  
Rodolfo “Rod” T. Santos, Residence Affairs Supervisor, University of California, Berkeley  
Cynthia Taing, APASS Counselor, Laney College/ Counselor, Chabot College  
Josh Williams, Director of Student Affairs, Antioch University  
Melissa “Missy” Wong, Financial Analyst & Business Officer, University of California, Berkeley  
Lin Young, Associate Director, Partnership UCLA

## PROPOSALS AND PROGRAMS

Belinda Veal, Ph.D., Policy Program Analyst, University of California, Office of the President (Chair)  
Alexis Montevirgen, Ed.D., Vice President of Student Services, College of Alameda  
Rachel Ugale, Systems Analyst, Chabot-Las Positas Community College District

## SOCIAL

Christina Taing, Counselor/Program Specialist, Berkeley City College (Chair)  
James Aganon, Counselor/Program Specialist, Berkeley City College  
Skyler Barton, College/Career Counselor, Berkeley High School  
Will Sapigao, Graduate Student, San Francisco State University  
Britt Sumida, Student Affairs Officer, University of California, Davis  
Jason Sumilhig, First Year Experience Coordinator, California State University, Sacramento  
Hyon Chu Yi-Baker, Director at MOSAIC Cross Cultural Center, San Jose State University

## TECHNOLOGY/LOGISTICS

Jack Tse, San Francisco State University (Chair)  
Corey Gin, Director of Leadership and Enrichment Program, California State University, East Bay  
Stacy Lee, Program Specialist, Mt. San Antonio College

## DONATIONS

Newin Orante, Ed.D., Vice President of Student Services, Diablo Valley College (Chair)  
Alexis Montevirgen, Ed.D., Vice President of Student Services, College of Alameda