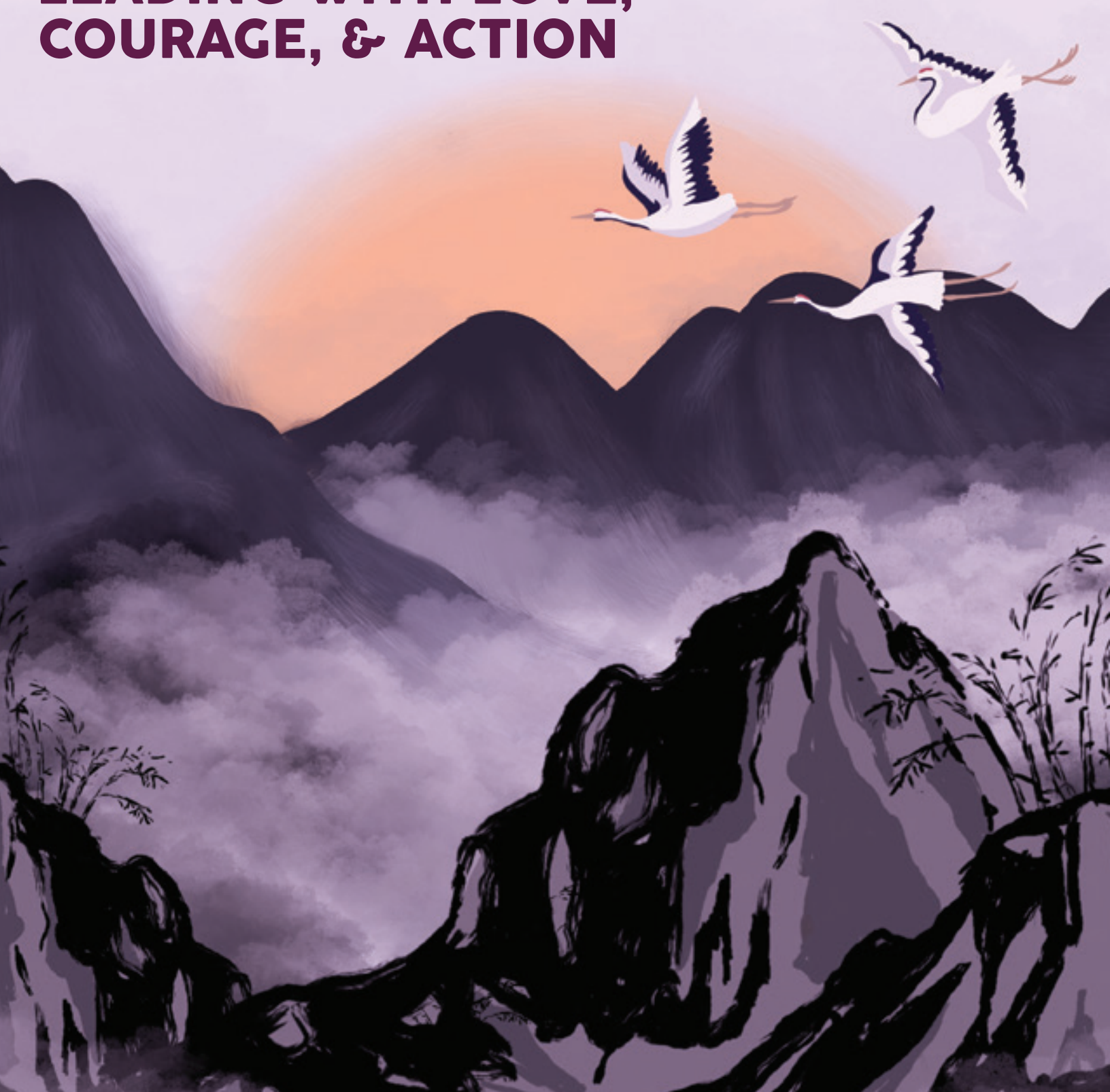


RADICAL HOPE **LEADING WITH LOVE,** **COURAGE, & ACTION**

APAHE
educate.
advocate.
advance.
ASIAN PACIFIC AMERICANS IN HIGHER EDUCATION



APAHE CONFERENCE 2024

THE MARRIOTT OAKLAND CITY CENTER
OAKLAND, CA

PRECONFERENCE APRIL 3, 2024
CONFERENCE APRIL 4-5, 2024

TITLE SPONSOR

The Asian American Foundation (TAFF)
The California Commission on Asian and Pacific
Islander American Affairs

DIAMOND SPONSOR

Atkinson, Andelson, Loya, Ruud & Romo
College of Alameda/Peralta Community College
District

Kern Community College District
Los Angeles Community College District
North Orange Community College District

PLATINUM SPONSOR

Mt. San Antonio College
San José –Evergreen Community College District
Sonoma State University

GOLD SPONSOR

AAAsian Pacific Islander American (APIA) Scholars
Cal Poly Pomona
California State University, Long Beach
California State University, Los Angeles
Chabot–Las Positas Community College District
Coast Community College District
Foundation for California Community Colleges
Long Beach City College Rancho Santiago
Community College
Rancho Santiago Community College District
San Diego State University
San Francisco State University
South Orange Community College District
University of California, Office of the President

SILVER SPONSOR

Allan Hancock College
California Community College Registry
Cañada College
California Polytechnic State University, San Luis Obispo
California State University, Chico
California State University, Dominguez Hills
California State University, Northridge
Sacramento State University
Citrus College
College of the Siskiyous
Community College League of California
Contra Costa Community College District
Irvine Valley College

SILVER SPONSOR CONT.

MiraCosta Community College
Ohlone College
Pasadena City College
Piper Sandler
San Diego Community College District
San Diego Mesa College
Santa Rosa Junior College

OTHER SUPPORT

College of Marin
Fullerton College
Leadership Education for Asian Pacifics

EXHIBITORS

APIA Scholars
Asian American Curriculum Project, Inc.
Asian Pacific American Leadership Institute
(APALI)
Cal Poly Pomona
California Community College Registry
California State University, Los Angeles
California State University, Office of the Chancellor
California State University, San Diego
California State University, San Francisco
CCPI-STEM
College of Alameda
Focal Points Design – Custom Jewelry and
Accessories by Linda Handy
Kern Community College District
Leadership Education for Asian Pacifics (LEAP)
Michael Lai, Author/Educator
Mt. San Antonio College
Rancho Santiago Community College District
REMS Technical Assistance Center
San Diego State University
Sonoma State University
State Center Community College District
The Asian American Foundation (TAAF)
UC Davis



**EMERITUS
BOARD OF DIRECTORS**

Patrick Hayashi, Ph.D.
Doris Ching, Ed.D.
A.Gabriel Esteban, Ph.D.
Judy Sakaki, Ph.D.
Dale Shimasaki, Ph.D.
Bob Suzuki, Ph.D.
Audrey Yamagata-Noji, Ph.D.

BOARD OFFICERS

PRESIDENT
Rowena M. Tomaneng, Ed.D.

VICE PRESIDENT
Frank Chong, Ed.D.

TREASURER
Yvonne Wu Craig

SECRETARY
Nancy Wada-McKee, Ed.D.

BOARD OF DIRECTORS

Sefa Aina
Ibrahim "Abe" Ali
Sam Bersola, Ph.D.
Wyman M. Fong
Lori Ideta, Ed.D.
Shaily Menon, Ph.D.
Leroy M. Morishita, Ed.D.
Patricia A. Neilson, Ed.D.
Mike Hoa Nguyen, Ph.D.
Arnold Paguio
Eric Ramones, Ed.D.
Kyle A. Reyes, Ph.D.
Mary Ann Takemoto, Ph.D.

April 3, 2024

On behalf of the Asian Pacific Americans in Higher Education (APAHE) Board, I welcome you to this year's dynamic conference!

Our theme this year is "Radical Hope: Leading with Love, Courage, and Action." Radical hope is the antithesis to trauma caused by oppressive social conditions. This theme encourages us to adopt a reflective practice to achieve transformation through the act of radical hope and inspires us to embody what is necessary for our healing. In the space of radical hope lies a new vision for a future, without the limitations of the past.

APAHE was founded in 1987. Our mission is dedicated to enhancing the educational opportunities for Asian and Pacific American students; promoting and supporting the hiring, retention, and advancement of qualified Asian and Pacific American faculty, staff, and administrators; and creating a better understanding of issues in the public affecting Asian and Pacific Americans in higher education. We encourage you to be a part of our growing voices.

As you look over this year's program, I believe you will find a variety of relevant and inclusive topics for your consideration. At APAHE, our goal is that you will find yourself in a safe learning environment with leaders and practitioners throughout the nation who have a commitment to your personal and professional growth. We further encourage you to reach out to others and to build not only your professional and career networks, but to grow your extended family.

On behalf of the APAHE Board, I welcome you to Oakland, California. I look forward to meeting and connecting with as many of you as possible in the days ahead. Have a great conference!

In Community Spirit,

Rowena M. Tomaneng

Rowena M. Tomaneng, Ed.D.
President



educate.
advocate.
advance.

ASIAN PACIFIC AMERICANS IN HIGHER EDUCATION

April 4, 2024

**EMERITUS
BOARD OF DIRECTORS**

- Patrick Hayashi, Ph.D.
- Doris Ching, Ed.D.
- A.Gabriel Esteban, Ph.D.
- Judy Sakaki, Ph.D.
- Dale Shimasaki, Ph.D.
- Bob Suzuki, Ph.D.
- Audrey Yamagata–Noji, Ph.D.

BOARD OFFICERS

PRESIDENT

Rowena M. Tomaneng, Ed.D.

VICE PRESIDENT

Frank Chong, Ed.D.

TREASURER

Yvonne Wu Craig

SECRETARY

Nancy Wada–McKee, Ed.D.

BOARD OF DIRECTORS

- Sefa Aina
- Ibrahim “Abe” Ali
- Sam Bersola, Ph.D.
- Wyman M. Fong
- Lori Ideta, Ed.D.
- Shaily Menon, Ph.D.
- Leroy M. Morishita, Ed.D.
- Patricia A. Neilson, Ed.D.
- Mike Hoa Nguyen, Ph.D.
- Arnold Paguio
- Eric Ramones, Ed.D.
- Kyle A. Reyes, Ph.D.
- Mary Ann Takemoto, Ph.D.

Dear Esteemed Attendees, Colleagues, and Honored Guests:

Welcome to the 2024 APAHE National Conference—Radical Hope: Leading with Love, Courage, and Action. With excitement and anticipation, we gather this week, united in our commitment to embrace radical hope and, in doing so, manifest love and model courageous leadership as part of our action in the work we do in higher education.

When our planning committee began discussing conference themes, we wanted to intentionally adopt a theme that reflected the human experience and how each of us grappled with a personal and collective crisis. None of us are spared from the human condition nor the profound realization of the fragility of life—but how we respond to these challenges tells us everything about our leadership. Students arrive at our colleges and universities with a literal and figurative backpack containing their life stories, joys, heartaches, and struggles. As educators, we have an incredible opportunity to lead with love, courage, and action—helping our students “unpack their bags” with extraordinary care and empathy.

Radical hope starkly contrasts the trauma inflicted by oppressive social circumstances. It instills within us the belief to instigate positive transformations and imagine a brighter future. While this vision may not be entirely clear or comprehensible, it urges us to embrace introspection as a pathway to affect change through proactive radical hope. This concept motivates us to embody the essential elements for personal and communal healing. Within the realm of radical hope, a fresh vision emerges for a future devoid of past constraints. Our hope is founded on love, courage, and action.

LOVE reminds us to continue the heart work of APAHE, celebrating and honoring the richness of our community and culture. We lead with COURAGE to create brave spaces that dismantle and disrupt systemic oppression that creates barriers for Asian Americans, Native Hawaiians, and Pacific Islanders (AANHPI) in higher education systems, especially in the wake of the rise in hate crimes and violence against our community. We move forward with ACTION to advance initiatives and reimagine and create a new reality for our AANHPI community.

How will you manifest radical hope and lead with love, courage, and action to open and clear paths with barriers, roadblocks, and inequities so our community can thrive? Throughout this conference, we encourage you to make the most of your time here by engaging in thought-provoking discussions, participating in empowering workshops and forming meaningful connections with fellow attendees. Together, we will explore how we can harness the power of hope, love, and courage to affect meaningful and lasting change within our institutions and communities. We encourage you to approach this conference with an open heart and a willingness to learn, grow, and be inspired.

Finally, we wish to express our sincere gratitude to the 2024 APAHE Conference Planning Team, and our subcommittee leads for the hours of work in organizing, coordinating, and executing the largest APAHE conference ever! This conference would not be possible without the “heart work” and the hard work that each of our planning team members gave to provide an unforgettable experience for all. We thank you for being part of this incredible journey with us, knowing we can create a more inclusive, equitable, and compassionate higher education landscape.

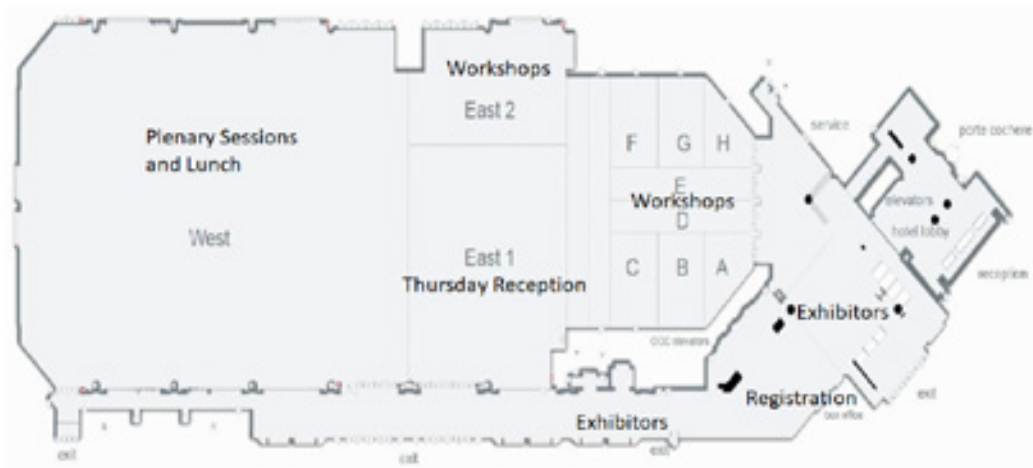
In community and service,

Dr. Ailene Cua Crakes
Conference Tri–Chair
Dean of Student Development
San Diego Mesa College

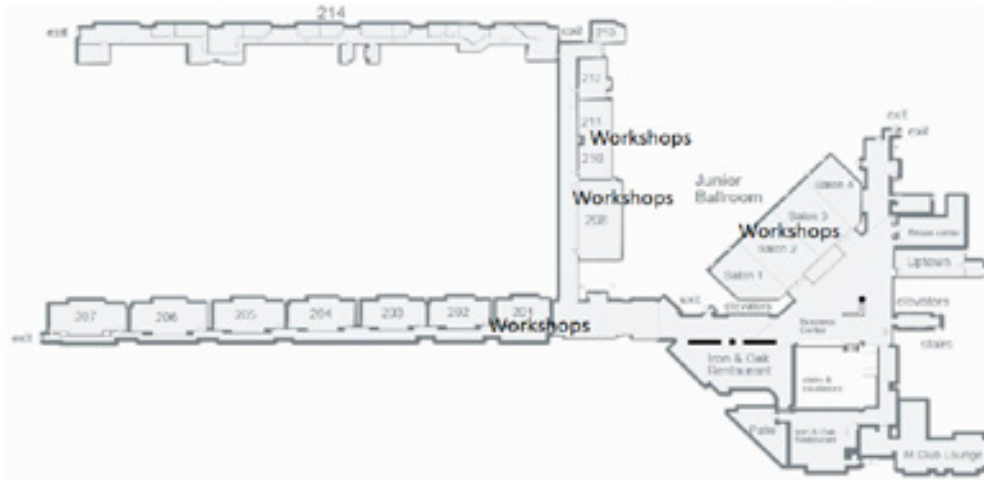
Dr. Naomi Querubin Abesamis
Conference Tri–Chair
Interim Dean of Student Support Services
Fullerton College

Takeo Kubo
Conference Tri–Chair
Director of Financial Aid and Scholarship Programs
San José City College

1st Floor



2nd Floor



Oakland and California Rooms – 3rd Floor



2024 PROGRAM

THURSDAY, APRIL 4, 2024

- 7:00 AM** Registration, Continental Breakfast and Networking Grand Ballroom Foyer, 1st Floor
- 8:00 AM** Land Acknowledgement, Muwekma Ohlone Blessing, and Welcome Remarks West Hall, 1st Floor
Rowena Tomaneng, Ed.D. – APAHE Board President and President of San José City College
Julie Dominguez, Muwekma Ohlone Tribal Ambassador
- 8:30 AM** Cultural Performance West Hall, 1st Floor
- 8:50 AM** Keynote Speaker West Hall, 1st Floor
Wenda Fong, President, CSU Board of Trustees
- 9:30 AM** Plenary Panel West Hall, 1st Floor
Equity Beyond Admissions: Ensuring Access and Support for Asian American and NHPI Students
 - Vikash Reddy, Ph.D., Vice President of Research, Campaign for College Opportunity
 - Rose Ann E. Gutierrez, Ph.D., Assistant Professor of Equity and Diversity in Education
 - Vincent Pan, Co-Executive Director, Chinese for Affirmative Action
 - Rowena M. Tomaneng, Ed.D., President, Asian Pacific Americans in Higher Education

Morning Posters

- Clinicians' Experiences Implementing Multidimensional Family Therapy with Bilingual (Spanish/English) and Trilingual (Spanish/English/Mixtec) Families Grand Ballroom Foyer, 1st Floor
- Filipino Enough: Racism & Filipino American Student Leadership
- Radical Hope in STEM: Navigating Identity and Choice Among Filipinx American Students

10:45 AM – 11:45 AM Concurrent Workshops – Group A

<p>A1 East 2 Hall</p> <p>Calling Out Call-Out & Cancel Culture: How to Lead with Love and Care in Difficult Conversations</p>	<p>A2 Grand Ballroom AB</p> <p>The “Other” Box: How Multiracial Students Get Lost in the Data</p>	<p>A3 Grand Ballroom C</p> <p>The Sikhs of Fiji</p>	<p>A4 Grand Ballroom F</p> <p>Leading with Love, Co-Creating Connections and Community: CSULB’s Project Resilience Peer Mentor Program for AANHPI Students</p>	<p>A5 Grand Ballroom GH</p> <p>From Incarceration to Becoming a Rising Scholar & Activist</p>
<p>A6 Junior Ballroom 1</p> <p>Student-Ready R1 AANAPISIs: Unpacking the UC AANAPISI and Implications for the Field of Higher Education</p>	<p>A7 Junior Ballroom 2</p> <p>Forging Our Future: Unveiling the Challenges in Higher Education for Pacific Islanders</p>	<p>A8 Junior Ballroom 3-4</p> <p>On Striving & Thriving: APIA Scholar Mental Health & Wellness</p>	<p>A9 Room 201</p> <p>Mapping Our Legacy: Radical Hope for the Courage to Lead with Authenticity</p>	<p>A10 Room 208</p> <p>Succession Planning for AAPI Higher Ed Leaders: A Case Study of UMass Boston’s AANAPISI Program</p>
<p>A11 Room 210/211</p> <p>“Isang Palpak” (One Fail): Reframing Notions of Failure Amongst Filipinx in Community College</p>		<p>A12 California Room</p> <p>Moving Forward Equity, Diversity, & Action: Collaboration Between the Academic Senate for California Community Colleges (ASCCC) and ASCCC Asian Pacific Islander (API) Caucus</p>		<p>A13 Oakland Room</p> <p>Empowering the Future: Asian American Advocacy for High-Quality Ethnic Studies in Local High School</p>

11:45 AM – 1:15 PM

Luncheon & Awards

Welcome Remarks

Pacesetter Award

- Wenda Fong, CSU Trustee and Board Chair

Community Champion Award

- Hon. Robert Underwood, Ed.D., Former Congressman of Guam and President, University of Guam

Celebrating the Retirement of APAHE Board Members

- Mary Ann Takemoto, Ph.D., Vice President Student Affairs, CSU Long Beach
- Nancy Wada-McKee, Ed.D., Vice President Student Life, CSU Los Angeles
- Lori M. Ideta, Ed.D., Vice Provost for Student Success, University of Hawaii Mānoa
- Wyman Fong, Vice Chancellor, Human Resources, Chabot-Las Positas Community College District

Afternoon Posters

- A Labor of Love: Establishing the First People & Culture–Sponsored Filipinx Faculty and Staff Association at the University of California, Berkeley
- Modern Filipinos in the Mental Health Field

1:30 PM – 2:30 PM Concurrent Workshops – Group B

<p>B1 East 2 Hall Integrating Art-Based Therapy as Part of Mental Health Holistic Programing to Promote Students' Well-Being and Sense of Belonging</p>	<p>B2 Grand Ballroom AB SPAM Lite: Student Professionals and Mentorship: Love Inspired Through Empowerment</p>	<p>B3 Grand Ballroom C Lineage of Heartwork: Empowering Leadership through Radical Hope at the UC Davis Strategic Asian and Pacific Islander Retention Initiative</p>	<p>B4 Grand Ballroom F Preserving Our Narrative: Healing through Storytelling within the Vietnamese Community</p>	<p>B5 Grand Ballroom GH The Data Voyage Project: Equity-Minded Approaches to Serving Native Hawaiian and Pacific Islander Students</p>
<p>B6 Junior Ballroom 1 Immersed in the First: Discussions with an Ate, Manang, Chi, and Euy in Higher Education</p>	<p>B7 Junior Ballroom 2 Voices from the Pacific: Understanding our Pasifika Students Through "Loto Mafana" (Willing Heart</p>	<p>B8 Junior Ballroom 3-4 Approaching Mental Health with Care, Courage, and Action: Collaborative Partnerships to Reach ANHPI Student</p>	<p>B9 Room 201 Embracing Radical Hope for Asian American & Native American Pacific Islander (AANAPI) Criminology Scholars</p>	<p>B10 Room 208 WTF, Social Justice?! C'mon Now...Walk It Like You Talk It</p>
<p>B11 Room 210/211 Achieving AANAPISI Status Through Operational Teams</p>		<p>B12 California Room Harvesting Radical Hope from AANHPI Literature: Welcome to the APASS Reading Club!</p>		<p>B13 Oakland Room From Silos to Synergy: Coalition Formation of AANAPISI and HSI</p>

1:30 – 3:30 PM AANAPISI Leaders Convening – By Invitation Only

Room OCC-205

2:45 PM – 3:45 PM Concurrent Workshops – Group C

<p>C1 East 2 Hall The Push and Pull of Leadership: Insights from Asian American Vice Presidents and Directors Leading in Multiple Sectors</p>	<p>C2 Grand Ballroom AB Research Practice Partnerships: AANAPISI and Lessons Learned from an NSF-Funded Project</p>	<p>C3 Grand Ballroom C Get Equitable Pay to Do What You Love: Develop the Courage to Ask and Take Action on Behalf of All AANHPIs</p>	<p>C4 Grand Ballroom F Cultivating Pacific Islander Leaders of Tomorrow, Today!</p>	<p>C5 Grand Ballroom GH "Do I Belong Here?": Serving Multiracial Students in Affinity Based Centers and Spaces</p>
<p>C6 Junior Ballroom 1 CSU AANHPI Collective: An Initiative for Change</p>	<p>C7 Junior Ballroom 2 Radical Hope in Action: Unleashing the Power of Allyship Within Us</p>	<p>C8 Junior Ballroom 3-4 Program Highlights & Panel Discussion from the California Community Colleges AANHPI Student Achievement Program</p>	<p>C9 Room 208 Building Bridges: Crafting Leadership Beyond Mentorship</p>	<p>C10 Room 210/211 What Are You? Creating Dialogue for Patchwork Identities and Mixed-Race Community Building</p>
<p>C11 California Room Rebuilding Spaces Through Hope, Healing, & Love: An Inside Glimpse on How Mt. SAC Students Strengthened Their API Community Post-Pandemic</p>			<p>C12 Oakland Room Legaseeds of Love: Life and Leadership in Filipinx Learning Communities</p>	

4:00 PM – 5:00 PM

Concurrent Workshops – Group D

<p>D1 East 2 Hall Framing Change: Empowering Filipino/a/x Communities through Photovoice</p>	<p>D2 Grand Ballroom AB To Enjoy Blessings and Endure Misfortune Together: The Benefits of Coalition Building and Allyship to Sustain and Enhance the AANHPI Voice</p>	<p>D3 Grand Ballroom C The Power of Networking: Authentically Building Com- munity and Relationships</p>	<p>D4 Grand Ballroom F Taking Action with Data and Research on Your Side</p>
<p>D5 Grand Ballroom GH What I Learned in Therapy: Shaping Asian American Safe Spaces for Students and Staff</p>	<p>D6 Junior Ballroom 1 Co-Conspiring Radical Change through Student Government Coalitions & Activism</p>	<p>D7 Junior Ballroom 2 Demystifying the Full-Time Faculty Hiring Process in California Community Colleges</p>	<p>D8 Junior Ballroom 3-4 Sac-Joaquin AANAPISI Cooperative: Strengthening Educational Pathways</p>
<p>D9 Room 208 Taking Care of Our Own: Culturally Nurturing Counseling + Work-Based Learning Practices</p>	<p>D10 Room 210/211 Flipping the Script, the Antidote is in the Poison: Re/Claiming Our Cultural and Community Wealth</p>	<p>D11 California Room Harnessing ERGs for Diversity, Equity, and Inclusion: Lessons from the Asian Pacific American Systemwide Alliance at UC Davis</p>	

5:15 PM - 7:15 PM

No Host Bar Reception w/DJ

East Hall, 1st Floor

FRIDAY, APRIL 5, 2024

7:00 AM	Registration, Continental Breakfast and Networking	Grand Ballroom Foyer, 1st Floor
8:00 AM	Welcome, Acknowledgements and Recognitions	West Hall, 1st Floor
	<p>Dr. Frank Chong, APAHE Vice President 2024 APAHE Planning Committee Chairs</p> <ul style="list-style-type: none"> • Dr. Ailene Cua Crakes, Dean, Student Development, San Diego Mesa College • Dr. Naomi Querubin Abesamis, Interim Dean of Student Support Services, Fullerton College • Takeo Kubo, Director, Financial Aid & Scholarships, San Jose City College 	
8:15 AM	Cultural Performance	West Hall, 1st Floor
8:45 AM	<p>Keynote Speaker Frank H. Wu, JD, President, Queens College, City University of New York</p>	West Hall, 1st Floor

9:30 AM – 10:30 AM Concurrent Workshops – Group E

<p>E1 East 2 Hall Making Waves: The Rise of Asian America</p>	<p>E2 Grand Ballroom AB Understanding Southeast Asian Students' Sense of Belonging</p>	<p>E3 Grand Ballroom C We Are More Than Cash Cows: Humanizing International Students</p>	<p>E4 Grand Ballroom F Boba Therapy: Finding Radical Hope and Communal Care to Heal from Intergenerational Traumas for Ourselves, Community, and AANHPI Students at the Community College</p>	<p>E5 Grand Ballroom GH Data Disaggregation in a Multi-verse World: AANAPISIs and HSIs</p>
<p>E6 Junior Ballroom 1 The Power in Our Sea of Islands: Pacific Islander Educators in Ethnic Studies</p>	<p>E7 Junior Ballroom 2 Kokua from the Mainland: Sending Prayers and Action to Those Impacted by the Maui Wildfires</p>	<p>E8 Junior Ballroom 3-4 Revolutionary Love and Radical Hope: Transformative Practices for Our Families, Classrooms, and Communities</p>	<p>E9 Room 201 A Moment to Heal in Support of Students, their Mental Health and Success</p>	<p>E10 Room 208 "Servingness" for Native Hawaiian and Pacific Islander Students: Leadership Strategies for Advocacy, Funding, and Practice in Higher Education</p>
<p>E11 Room 210/211 Don't Compete, Collaborate</p>	<p>E12 California Room How to Talk About Mental Health with Your AAPI Families: Addressing Stigmas and Finding Care</p>		<p>E13 Oakland Room Delta College is in the Heart</p>	

10:45 AM – 11:45 AM Concurrent Workshops – Group F

<p>F1 East 2 Hall Leadership: A Conversation with AAPI CEOs</p>	<p>F2 Grand Ballroom AB Asian American Women Leaders in Higher Education: Leading with Love, Courage, and Action</p>	<p>F3 Grand Ballroom C Finding the Sweet Spot with Community Support Groups: A Collaborative Approach to Increasing Mental Health Access for AANHPI Students</p>	<p>F4 Grand Ballroom F Re-Imagining Transformative Leadership in Higher Ed: Lessons of Solidarity from Social Movements</p>	<p>F5 Grand Ballroom GH From AANAPISI Program to AANAPISI Institution</p>
<p>F6 Junior Ballroom 1 Beyond the Bubble Bath: A Critical Approach to Self-Care</p>	<p>F7 Junior Ballroom 2 Embodying Racial Hope & Love through Cura Personalis: How to Increase Access, Equity & Success for AANHPI Students through Individualized Holistic Student Support</p>	<p>F8 Junior Ballroom 3-4 Engaging Hearts and Minds: Creating Inclusive Spaces for Students with Disabilities</p>	<p>F9 Room 201 Voices from Another Hidden Southeast Asian American Group: Lao American Barriers and Bridges to Academic Success</p>	<p>F10 Room 208 Trajectories of Hope: From Ethnic Student Organization Leaders to Higher Education Professionals</p>
<p>F11 Room 210/211 With Hella Alofa/'Ofa: How Nesians Unite, A Pasifika Student-Led Club, Sparked a Learning Community</p>	<p>F12 California Room Experiencing the EdD Doctorate as a Native: A Panel Discussion About Challenging Academic Norms of Research Practice</p>		<p>F13 Oakland Room Meeting to Continue Building and Enhancing APIDA Community at Your Institution</p>	

Morning Posters

Grand Ballroom Foyer, 1st Floor

- Becoming Chinese: Re-Learning Cultural Roots as a First Generation Chinese American
- Filipino/a/x American Ethnic Identity and Sense of Belonging in College
- Nurturing Southeast AA Leaders in Higher Education
- What is AAPI? NOVA's Photovoice Project

11:45 AM – 1:15 PM

West Hall, 1st Floor

Luncheon & Awards

Welcome Remarks – Michael Drake, M.D., President, University of California System

2024 APAHE CEO Awards

- Galvin Deleon Guerrero, Ed.D., President, Northern Marianas College
- Julie Chen, Ph.D, Chancellor, University of Massachusetts Lowell
- Frank H. Wu, JD, President, Queens College, NY
- Sonya Christian, Ph.D, Chancellor, California Community Colleges

1:30 PM – 2:30 PM Concurrent Workshops – Group G

<p>G1 East 2 Hall By the Swiping of My Fingers and the Clicking of My Thumbs Something Wicked This Way Comes: An Adult's Guide to Helping Students Navigate the House of Smoke and Mirrors a.k.a. Social Media</p>	<p>G2 Grand Ballroom AB Countering the Shy Girl Narrative: Leveraging Our Stories to Take Up Space and Explore Our Possibilities</p>	<p>G3 Grand Ballroom C Layers of Identity: Unpacking Southeast Asian Heritage in Steps</p>	<p>G4 Grand Ballroom F Navigating Institutional Turbulence: Upholding Values of Inclusion, Love, Teamwork, and Kindness</p>	<p>G5 Grand Ballroom GH Practicing Hope: Combatting Pessimism and Burnout in the Climate Movement</p>
<p>G6 Junior Ballroom 1 How Advisors are Transforming UC Davis into the Ally Students Need</p>	<p>G7 Junior Ballroom 2 Access, Relevance, Community (ARC): Ethnic Studies Transfer Pathways between SF State and San Mateo Community College District</p>	<p>G8 Junior Ballroom 3-4 Coalitional Rubrics Under Conditions of Resource Scarcity: Curricular and Co-Curricular Retention Frameworks for AANHPI and Native Students</p>	<p>G9 Room 201 Leading with Love, Holding Courage, and Action Advocacy: Asian Pacific Islander Staff Association in Action at UC Office of the President</p>	<p>G10 Room 208 The Importance of Allyship in Navigating Ethnic Studies Wars</p>
<p>G11 Room 210/211 Getting Ahead: Skills for Career Success</p>	<p>G12 California Room Community to Capitol Advocacy Framework, a Guide for Statewide Higher Education Initiatives</p>		<p>G13 Oakland Room "Gay-sian": Navigating Higher Education as a Queer Identified AAPI Leader</p>	

2:45 PM – 3:45 PM

Concurrent Workshops – Group H

<p>H1 East 2 Hall Block by Block: The Struggle to Build the Chinatown/North Beach Campus at City College of San Francisco</p>	<p>H2 Grand Ballroom AB Campus Climate and Sense of Belonging on Campus: Integrating Data to Support AANHPI's</p>	<p>H3 Grand Ballroom C 2-Year vs. 4-Year Institutions: Exploring Diversity, Equity, and Inclusion (DEI) Work through an Academic and Student Affairs Lens</p>	<p>H4 Grand Ballroom F Threads of Love: Exploring Hobbies for Mental Health and Well-Being</p>
<p>H5 Grand Ballroom GH Your Liberation is Bound Up with Mine: How Disaggregation Can Uplift the Southeast Asian Community</p>	<p>H6 Junior Ballroom 1 Designing Technology to Promote Diversity, Equity, and Inclusion Within the Higher Education Landscape: A Case Study Using VR Chemistry Labs</p>	<p>H7 Junior Ballroom 2 Fresno City College's USEAA (United Southeast Asian American) Academic Program: A case study on AANHPI Student Success Programs in the California Community College System</p>	<p>H8 Junior Ballroom 3-4 Asian American Studies Now: Contemporary Opportunities and Challenges in Higher Education</p>
<p>H9 Room 208 Collective Wisdom, Collective Hope: An Interactive Workshop on Mentoring Circle</p>	<p>H10 Room 210/211 Pakikipagkapwa-Tao: Disillusionment, Touchstones, and Radical Hope in Higher Ed</p>	<p>H11 California Room "Do I Belong?": Shifting Structures of Support through Radical Love for AAPI Students in Middle College/Dual Enrollment</p>	

4:00 PM – 5:00 PM

Closing Session – Call to Action

West Hall, 1st Floor

Frank Chong, Ed.D, Vice President, Asian Pacific Americans in Higher Education



CONCURRENT SESSION DESCRIPTIONS

**THURSDAY, APRIL 4, 2024
(10:45 AM TO 11:45 AM)
GROUP A**

A1 - EAST 2 HALL

CALLING OUT CALL-OUT & CANCEL CULTURE: HOW TO LEAD WITH LOVE AND CARE IN DIFFICULT CONVERSATIONS

Target Audience: Undergraduate/Graduate
Students

Whether intentionally or unintentionally, people in our communities hurt us, and we hurt them. We repeat what we see in cancel culture, where people get publicly discredited and punished on social media, then ostracize those who have wronged us as a way of accountability. In this workshop, students and student support staff can learn about the 3 C's (Calling Out, Calling On, and Calling In) as a means of expanding how we can vocalize our pain and hurt while still holding our loved ones accountable. Learn how to invite people into a conversation instead of a fight.

Presenters:

- Helen Dang Ngo, BA, Program Coordinator, University of Massachusetts Boston AANAPISI program

A2 – GRAND BALLROOM AB THE “OTHER” BOX: HOW MULTIRACIAL STUDENTS GET LOST IN THE DATA

Target Audience: Senior-Level Professionals

This panel centers on the nuances of the mixed-race experience and how we can all work to better support multiracial AAPIs. Presenters will begin by sharing their experiences as mixed-race students and professionals. This will be followed by a discussion of data related to mixed-race students—including testimonials from students and documented research—and the presence (or lack) of multiracial programming and services.

The final portion of the panel will feature proposed solutions regarding the lack of services and community for multiracial students on our campuses and make suggestions as to how to build institutional infrastructure for the growing mixed-race student population.

Presenters:

- Sinclair Tirona, M.A., Program Manager; Associate Faculty, Communication Studies, MiraCosta Community College
- Tina Oshima Helmstreit, Program Manager, MiraCosta College
- Nina Moskowitz, M.A., Learning Specialist, University of California, Berkeley
- Jonathan Ng, MEd, UMOJA Coordinator/Counselor, Cuyamaca Community College
- Emma Blackthorne, PhD, Senior Dean of Research and Planning, Contra Costa Community College District

A3 – GRAND BALLROOM C THE SIKHS OF FIJI

Target Audience: Mid-Level Professionals

This session will explore and analyze the history and culture of the Sikh community in Fiji. First, we will discuss the history of Fiji (pre- and post-colonial) and the history of the Sikh diaspora transnationally. Second, we will explore the influence of colonialism and imperialism on Vaka Viti (“the Pacific Way”) and the Sikh Panth (“the Sikh community”). Finally, we will discuss the present realities facing Sikhs in Fiji and abroad.

Presenters:

- Amrik Johal, Ph.D., Assistant Dean of Students, Irvine Valley College

A4 – GRAND BALLROOM F LEADING WITH LOVE, CO-CREATING CONNECTIONS AND COMMUNITY: CSULB’S PROJECT RESILIENCE PEER MENTOR PROGRAM FOR AANHPI STUDENTS

Target Audience: Undergraduate/Graduate
Students

The Project Resilience Peer Mentor Program (PMP) at CSULB promotes wellness through one-on-one peer mentoring and group programming that facilitates a sense of belonging and appreciates cultural differences for AANHPI students. Mentors actively work to increase mentees’ knowledge and access to campus and community wellness resources and collaborate with departments and offices to support AANHPI and wellness programs. This workshop will feature examples of peer-facilitated activities which have broadened the reach to our AANHPI students. The PMP is one of

four programs of Project Resilience, a U.S. Department of Education AANAPISI grant in its second year of implementation (2021–2026).

Presenters:

- Diane Hayashino, Ph.D., Staff Psychologist at Counseling & Psychological Services, CA State University, Long Beach
- Barbara Kim, Ph.D., Professor, Chair, and Undergraduate Advisor in the Dept. of Asian and Asian American Studies, Principal Investigator, CSULB AANAPISI Project Resilience California State University, Long Beach
- Renee Te, M.S., Project Director for Project Resilience, CSULB

A5 – GRAND BALLROOM GH FROM INCARCERATION TO BECOMING A RISING SCHOLAR & ACTIVIST

Target Audience: New Professionals

This workshop will include the journey of AAPI scholars and activists who are justice impacted and thriving in Community College. Attendees will engage, reflect, and learn about the experiences of justice impacted students and how the Rising Scholars program has become instrumental towards student success, self-liberation, and healing. Those who attend this workshop will learn about the transformative and social justice praxis that further elevate AAPI students in Community College and beyond.

Presenters:

- Hossna Sadat Ahadi, Ed.D., Professor & Counselor, Palomar College
- Sinatulutuluiamoana Venise Laie, current community college student, majoring in AODS and Human Development major, ASG VP of Events and Rising Scholar at Palomar College

A6 – JUNIOR BALLROOM 1 STUDENT-READY R1 AANAPISIS: UNPACKING THE UC AANAPISI AND IMPLICATIONS FOR THE FIELD OF HIGHER EDUCATION

Target Audience: Senior-Level Professionals

As of Fall 2023, eight of nine UC Campuses are federally designated as AANAPISIs. In this panel discussion, experts will highlight the unique role of UCs within the AANAPISI ecosystem. Representatives from three UC campuses will provide insights from across the state of California, demonstrating the necessity to “reimagine” how we think about AANAPISIs both within the UC and among the higher education community at large. Panelists will highlight the potential for supporting

AA&NHPI student success and well-being and engage with the question: What does it mean to be a research-intensive, public, AANAPISI university system?

Presenters:

- Willa Mei Kurland, M.A., PhD Student and Research Associate, UCLA
- Robert T. Teranishi, Ph.D. Professor of Education Morgan and Helen Chu Endowed Chair of Asian American Studies, University of California, Los Angeles
- Katherine J. Parpana, M.A., Director of the Strategic Asian and Pacific Islander Retention Initiative, Office of Asian and Pacific Islander Academic Student Success, Doctoral Student, UC Davis School of Education, University of California, Davis
- Mariam B. Lam, Ph.D., Vice Chancellor & Chief Diversity Officer, Associate Professor of Comparative Literature Cooperating Faculty in Ethnic Studies, University of California, Riverside
- Dadao Hou, Ph.D., Director of Policy and Planning, Office for Diversity, Equity, and Inclusion, University of California, Santa Cruz

A7 – JUNIOR BALLROOM 2 FORGING OUR FUTURE: UNVEILING THE CHALLENGES IN HIGHER EDUCATION FOR PACIFIC ISLANDERS

Target Audience: Undergraduate/Graduate Students

Since 1986, the Pacific Islands Student Association has assisted and cultivated UCLA's student leaders. Despite this, Pacific Islander students remain significantly underrepresented and face many challenges when navigating higher education institutions. This workshop demonstrates how student-initiated action develops Pacific Islander student leaders through the experiences of current students and staff. This program also takes into account how crucial it is for Pacific Islander teachers and university

employees to build a strong community that promotes Pacific Islander student admission, retention, and leadership development.

Presenters:

- Perzianee Devoux, Community Programs Office (CPO) Transportation Services Manager, University of California, Los Angeles (UCLA)
- Jiorden King, Pacific Islands' Student Association (PISA) President, University of California, Los Angeles (UCLA)
- Theodore Malepeai, Improving Nurturing Sustaining Pacific Islander Retention and Education (INSPIRE) Project Coordinator

A8 – JUNIOR BALLROOM 3-4 ON STRIVING & THRIVING: APIA SCHOLAR MENTAL HEALTH & WELLNESS

Target Audience: Mid-Level Professionals

This workshop will focus on current mental health challenges and stressors common for AANHPI college students. We will present findings from a recent research initiative at APIA Scholars and host a space for discussing students' financial concerns, academic stressors, identity distress, and familial worries. We will also present recommendations for trauma-informed practices, and programming that attend to AANHPI student needs across agencies and institutions. We'll close with space for attendees to brainstorm interventions they might launch at their respective institutions and discuss how they might overcome barriers to equity and wellness.

Presenters:

- Marcia Liu, Ph.D., HCAP Mental Health Specialist, CUNY Hunter College
- Christina Lambert, M.S., Associate Vice President of Strategic Initiatives, APIA Scholars

A9 – ROOM 201 MAPPING OUR LEGACY: RADICAL HOPE FOR THE COURAGE TO LEAD WITH AUTHENTICITY

Target Audience: Mid-Level Professionals

Mapping Our Legacy: Radical Hope for the Courage to Lead with Authenticity is a ceremony of self-love, courage, and action framed through the CHamoru concept of inafa'maolek, interpreted as a way to practice "striving for harmony" within self and among the community. Join us to talk about centering leadership in a way that honors our ancestors. To align cultural ways of knowing and being with our work, we will create a space that links our past, present, and future to define leadership legacy and encourage commitment to an ongoing journey of self-reflection, healing, and empowerment.

Presenters:

- Andi Fejeran Sims, Ed.D., Associate Dean of Humanities and Social Sciences, Student Life, Mt. San Antonio College
- Aida Cuenza-Uvas, Ed.D., Director, Arise Program, Mt. San Antonio College

A10 – ROOM 208 SUCCESSION PLANNING FOR AAPI HIGHER ED LEADERS: A CASE STUDY OF UMASS BOSTON'S AANAPISI PROGRAM

Target Audience: Senior-Level Professionals

AAPIs are the fastest growing college student population, yet higher education student support staff remain predominantly White, with AAPIs significantly underrepresented within the field. Underrepresentation among AAPI student support staff is problematic for both AAPI students facing challenges in access and thriving in college, but also in how it reveals the lack of career pathways for AAPI professionals entering the higher education field. This panel presentation will share insights from current and past UMass Boston AANAPISI Project Directors. The session will delve into the need for and significance of nurturing a purposeful leadership pathway tailored for AAPI staff.

Presenters:

- Karen Chi, M.A., Associate Director of UMass Boston's AANAPISI Program, University of Massachusetts Boston
- Patricia Neilson, Ed.D, Founding AANAPISI Director- UMass Boston, APAHE Board Member, AANAPISI Initiatives
- Sara Boxell Hoang, PhD, Director, UMass Boston's AANAPISI Program

A11 – ROOM 210/211 "ISANG PALPAK" (ONE FAIL): REFRAMING NOTIONS OF FAILURE AMONGST FILIPINXS IN COMMUNITY COLLEGE

Target Audience: Undergraduate/Graduate Students

Inspired by the clapping ritual "isang bagsak" (one down), this session proposes a variation on the concept -- "isang palpak" (one fail) -- to normalize failure through the lenses of ethnic identity, empowerment, and advocacy. By examining Filipino cultural values, including "hiya" (shame), panelists will reflect on their academic journey with a focus on reframing experiences deemed as failures. The diverse panel includes perspectives from an academic counselor and those who have navigated gap years, reverse transfer, probation, and changing majors. The discussion will address the complexities of Filipinx identity and ultimately work to destigmatize mental health and the community college pathway.

Presenters:

- Cherlin "Chey" Ongkeko, B.A., Philippine Studies Student, City College of San Francisco
- Anthony Amboy, MFA; Director, Asian American, Native Hawaiian, Pacific Islander Student Achievement Program; Foundation for California Community Colleges

A12 – CALIFORNIA ROOM

“MOVING FORWARD EQUITY, DIVERSITY, & ACTION: COLLABORATION BETWEEN THE ACADEMIC SENATE FOR CALIFORNIA COMMUNITY COLLEGES (ASCCC) AND ASCCC ASIAN PACIFIC ISLANDER (API) CAUCUS”

Target Audience: New Professionals

Interested in making a statewide impact as a faculty leader? Come to this session to meet faculty who are involved in the ASCCC API (Asian Pacific Islander) Caucus and its work and collaboration with ASCCC committees (in particular Equity Diversity Action Committee), and learn about how the ASCCC Resolutions Process is a democratic means for faculty to propose and submit resolutions for the ASCCC body to vote on and adopt as ASCCC positions and/or actions to take. In addition to faculty (new, mid-level, and senior), we also welcome students and other constituents to come learn about the Caucus, ASCCC, and their Resolutions process. ASCCC's mission to center IDEAA (inclusion, diversity, equity, anti-racism, and accessibility) means that it is committed to welcoming and building a pipeline of CCC faculty statewide who proportionately represent the diversity of California's population and students. Engaging students who are interested in being part of that pipeline, as well as new, mid-level, and senior-level professionals who also support that goal is an aim of this workshop.

Presenters:

- Karen Chow, Ph.D., Faculty, De Anza College & Chair, ASCCC Equity Diversity Action Committee, De Anza College & Academic Senate for California Community Colleges
- Pablo Martin, ASCCC API Caucus Chair & Academic Senate President, San Diego Miramar College
- Michael Takeda, Acting Academic Senate President, Fresno City College & ASCCC API Caucus Founding Chair
- Bethany Tasaka, Interim Dean of Mathematic, Business, and Computer Technology division
- San Bernardino Valley College, & ASCCC API Caucus Chair 2022-23

A13 – OAKLAND ROOM

EMPOWERING THE FUTURE: ASIAN AMERICAN ADVOCACY FOR HIGH-QUALITY ETHNIC STUDIES IN LOCAL HIGH SCHOOLS

Target Audience: Undergraduate/Graduate Students

In this workshop, we will explore the pivotal role Asian American college students and young professionals can play in shaping the educational landscape of their local high schools through advocacy for high-quality ethnic

studies programs. With a focus on the implementation of ethnic studies, participants will gain insights into three key principles to ensure high-quality Ethnic Studies: Community-based, student-centered, and social justice-oriented. Through interactive discussions, case studies, and collaborative activities, attendees will develop the skills and knowledge needed to become influential advocates for equitable education for Asian American youth.

Presenters:

Pamela M. Low, M.A., Policy Analyst, EdTrust-West

THURSDAY, APRIL 4, 2024

(1:30 PM TO 2:30 PM)

GROUP B

B1 – EAST 2 HALL

INTEGRATING ART-BASED THERAPY AS PART OF MENTAL HEALTH HOLISTIC PROGRAMMING TO PROMOTE STUDENTS' WELL-BEING AND SENSE OF BELONGING

Target Audience: Target Audience: Senior-Level Professionals

In September 2022, Middlesex Community College secured a renewed \$1.7 million, five-year grant from the Department of Education for the Asian American, Native American, Pacific Islander-Serving Institution (AANAPISI) program. The grant aims to expand academic, social, and emotional support, with an emphasis on eliminating barriers and increasing access for Asian American students. With the rise of racially motivated attacks on AANHPI communities during the pandemic, there has been a heightened level of anxiety and racial trauma. This panel presentation will showcase the effectiveness of art-based therapy in promoting the overall well-being, and a sense of belonging for Asian American students.

Presenters:

- Virak Uy, M.Ed, Director of Program for Asian American Student Advancement & Interim Director of the Center for Truth, Racial Healing & Transformation, Middlesex Community College
- Noreen McGinness Olson, M.A, Assistant Dean of Student Success Program, Middlesex Community College
- Jennifer Nguyen, M.A, Retention & Wellness Specialist, Middlesex Community College
- Charly Chea, B.A, Program Specialist, Middlesex Community College
- Pichraksmey Hoen, AAS, Program Assistant, Middlesex Community College

- Muy Ngy Lov, Student Peer Mentor, Middlesex Community College

**B2 – GRAND BALLROOM AB
SPAM LITE: STUDENT PROFESSIONALS AND
MENTORSHIP: LOVE INSPIRED THROUGH
EMPOWERMENT**

Target Audience: Undergraduate/Graduate Students

Student employment opportunities offer a great sense of purpose, community, and professional development for AANHPI undergraduate students. This workshop provides insight into how SD Mesa AANHPI students seized student employment opportunities that have helped them develop professionally while continuing to support their AANHPI community. Learn more about how they navigate their roles as students and workers, the challenges and benefits, and how these opportunities came about through faculty/staff mentorship. This workshop is an invitation to those interested in seeking similar opportunities on your campus.

Presenters:

- Patricia (Trish) Guevarra, M.S., Kapwa Counselor/Coordinator, San Diego Mesa College
- Leilani Maanao, Promise Project Assistant, Kapwa Alumni, San Diego Mesa College
- Derek Pham, Undergraduate, Peer Navigator, San Diego Mesa College
- Kathrinna Susanto, Undergraduate, Peer Navigator, San Diego Mesa College
- Raelene Mancilla, Undergraduate, Peer Navigator, San Diego Mesa College

**B3 – GRAND BALLROOM C
LINEAGE OF HEARTWORK: EMPOWERING
LEADERSHIP THROUGH RADICAL HOPE AT
THE UC DAVIS STRATEGIC ASIAN AND PACIFIC
ISLANDER RETENTION INITIATIVE**

Target Audience: Senior-Level Professionals

The UC Davis Strategic Asian and Pacific Islander Retention Initiative (SAandPIRI) will host a moderated student panel with current scholars and alumni. Through their narratives, attendees will hear about the critical connections and advocacy of the scholars since SAandPIRI's inception. Through the heartwork contributions of the students and their courage to disrupt, the panelists will discuss their legacy for change towards institutionalizing counter-spaces for fellow AandPI scholars to connect, build community, and be academically successful at an R-1 AANAPISI.

Presenters:

- Chris Pangelina, M.A., Associate Director of the Strategic Asian and Pacific Islander Retention Initiative and Office of Asian and Pacific Islander Academic Student Success, University of California at Davis
- Angel Truong, Office Coordinator for the Strategic Asian and Pacific Islander Retention Initiative and Office of Asian and Pacific Islander Academic Student Success, University of California, Davis
- Kat Parpana, M.A., Director for the Strategic Asian and Pacific Islander Retention Initiative and Office of Asian and Pacific Islander Academic Student Success, University of California, Davis

**B4 – GRAND BALLROOM F
PRESERVING OUR NARRATIVE: HEALING
THROUGH STORYTELLING WITHIN THE
VIETNAMESE COMMUNITY**

Target Audience: New Professionals

This gathering provides an opportunity for everyone to explore the healing power of storytelling within the rich tapestry of Vietnamese narratives. Engage in guided discussions and interactive activities that not only foster connections but also contribute to a critical examination of refugee experiences. By celebrating the resilience and diversity within the Vietnamese community, this workshop aims to create a space for individual and collective healing. Join us on a journey of empowerment, as we highlight the strength found in the unique stories that weave the fabric of our shared human experience.

Presenters:

- Judy Huynh, M.A., Assistant Director of Admission, Stanford University
- Kat Olvey, BA English, M.A., Assistant Professor, Santa Monica College
- Vanson Nguyen, Ed.D., Professor/Co-Chair, College of Alameda

**B5 – GRAND BALLROOM GH
THE DATA VOYAGE PROJECT: EQUITY-
MINDED APPROACHES TO SERVING NATIVE
HAWAIIAN AND PACIFIC ISLANDER STUDENTS**

Target Audience: Mid-Level Professionals

Through a facilitated discussion by APIA Scholars and a team of researchers from UCLA, participants will gain new insight into particularly vulnerable NHPI student groups and explore the potential for an inquiry-based approach to identifying best practices and systemic change that promotes NHPI student success.

Presenters:

- Robert Teranishi, Ph.D., Professor, UCLA

- Frankie Harriss, Vice Chancellor for Academic Affairs, Kaua'i Community College
- Michaelyn Nākoa Hall, Interim Executive Director of Strategy, Kapi'olani Community College
- Jessica L. W. Miranda, Executive Director of Strategic Directions, Assessment, and Accreditation, University of Hawai'i, West O'ahu
- Marlena Pangelinan, Vice Provost of Institutional Effectiveness, University of Guam
- Demeturie Toso-Lafaele Gogue, Doctoral Candidate
- Rose Ann Gutierrez, Assistant Professor, University of Nevada, Reno

space for amplifying the visibility (APAHE 2023 theme) of NHPs. Attend this session to improve your cultural competency and to increase your understanding of this underrepresented group. Conspire with us to "create a village" of support for college-going NHPs.

Presenters:

- Aida Cuenza-Uvas, Ed.D., Director, Arise Program, Mt. San Antonio College
- Tutasi Asuega, B.A., Arise Program Specialist II, Mt. San Antonio College

**B6 – JUNIOR BALLROOM 1
IMMERSED IN THE FIRST: DISCUSSIONS WITH AN ATE, MANANG, CHI, AND EUY IN HIGHER EDUCATION**

Target Audience: Mid-Level Professionals

With recent articles, the topic of eldest daughters has captured the culture's attention. While we share some similarities, first daughters are different. First daughters are the first in their families to speak English fluently, which means there are cultural, societal, and linguistic burdens that come with this title. They're the first to complete their FAFSA. The first to attend college. The first to work in an office. This workshop is comprised of four first daughters who will share and invite others to talk about how their first-daughterness has shaped not only their worldview, but their outlook on higher education.

Presenters:

- Maggie Thach Morshed, M.F.A. in Creative Nonfiction, Humanities Lead, UC San Diego OASIS
- Emmeline Domingo, M.A, OASIS ARC (Academic Resource Communities) Supervisor, UC San Diego
- Maribel Geronimo, OASIS Summer Programs Manager, UC San Diego
- Vanessa Keodara, OASIS Summer Programs Assistant, UC San Diego

**B8 – JUNIOR BALLROOM 3-4
EMBRACING RADICAL HOPE FOR ASIAN AMERICAN & NATIVE AMERICAN PACIFIC ISLANDER (AANAPI) CRIMINOLOGY SCHOLARS**

Target Audience: Senior-Level Professionals

The AANAPISI Initiative at California State University, Fresno, seeks to empower, encourage, and increase student success of underrepresented AANAPI Criminology students. The presentation will guide participants through two aspects within the program: Work-Based Learning Experience and Student Success. In addition, our Asian American Pacific Islanders in Criminology (AAPIC) Peer Mentors will share their experiences and the impacts the program has made on their journey through a panel discussion. Join us in this session as we share about our program, celebrate successes, and invite participants to embrace radical hope in supporting AANAPI Criminology students.

Presenters:

- Lisa Xiong, Student Success Project Coordinator, California State University, Fresno
- Samantha Bautista, M.S, Work-Based Learning Experiences Project Coordinator, California State University, Fresno

**B7 – JUNIOR BALLROOM 2
VOICES FROM THE PACIFIC: UNDERSTANDING OUR PASIFIKA STUDENTS THROUGH "LOTO MAFANA" (WILLING HEART)**

Target Audience: Mid-Level Professionals

Voices from the Pacific is a love letter to educators in higher education concerned with the success of Native Hawaiian Pacific Islander (NHPI) students. As institutional agents, how can you become more inclusive and mindful of how you advocate for NHPI students? Through scholarship and practice, we continue to create

**B9 – ROOM 201
APPROACHING MENTAL HEALTH WITH CARE, COURAGE, AND ACTION: COLLABORATIVE PARTNERSHIPS TO REACH ANHPI STUDENTS**

Target Audience: Mid-Level Professionals

Student Health and Counseling at Cal State East Bay utilizes culturally aligned practices, strategically embeds counselors within departments to increase access, and evaluates the effectiveness of its services. Outcomes of this model have included increased usage of counseling services by ANHPI students, a 35% reduction in distress, and a 96% satisfaction rate. This workshop will facilitate a community space to reflect upon the challenges and needs of implementing culturally relevant mental health

services on college campuses. Our radical hope is to ensure students thrive through collective, courageous healing so that communities are uplifted generationally.

Presenters:

- Kevin Gin, Ph.D., Interim Associate Director, Cal State East Bay
- Fanny Yeung, PhD, Associate Vice President Institutional Strategy and Effectiveness, Accreditation Liaison Officer, Cal State East Bay
- Eun Rhee, PhD, Research Associate, Cal State East Bay
- Shauna Hong, LCSW, Director of Counseling Services, Cal State East Bay
- Bunny Ott, LMFT, APCC, Counselor, Cal State East Bay
- Dahlia Case, LMFT, Counselor, Cal State East Bay
- Marie Alexandra Ibarra, M.A., Asian Pacific Islander Student Success Center Coordinator, Cal State East Bay

**B11 – ROOM 210/211
ACHIEVING AANAPISI STATUS THROUGH
OPERATIONAL TEAMS**

Target Audience: Mid-Level Professionals

CU Denver has set the goal of becoming the first “equity-serving institution.” In 2021, it greenlit an AANAPISI Operational Team, charged with ascertaining the needs of AAPI students and developing pilot programs to remove barriers to their success. The data and design of these pilot programs laid the groundwork for an AANAPISI grant proposal that CU Denver submitted in 2022 to the Department of Education. This panel will discuss the operational team model and their resultant pilot programs at CU Denver to provide a model for colleagues at other universities who seek to gain MSI statuses for their institutions.

Presenters:

- Faye Caronan, Ph.D., Associate Professor of Ethnic Studies/Associate Dean of Faculty and Staff Affairs in College of Liberal Arts & Sciences, University of Colorado Denver
- Patricia “Yumi” Park, University of Colorado Denver
- Yang Wang, Ph.D., Assistant Professor of Art History, University of Colorado Denver

**B10 – ROOM 208
WTF, SOCIAL JUSTICE?! C’MON NOW...WALK
IT LIKE YOU TALK IT**

Target Audience: Undergraduate/Graduate Students

“WTF, Social Justice?!” will explore attendees’ understanding of social justice, what social justice looks like in 2024 in and around our Asian American Pacific Islander and Desi (APIIDA) communities, and more importantly, how we as students, faculty, staff, trustees, and community partners can turn understanding into action for the empowerment of our communities worldwide. This guided discussion will be facilitated by two longtime community organizers and educators, Kirin Macapugay, an indigenous person, and Benjamin Nakamura, a descendant of Japanese-Americans interned during WWII, who have taught in juvenile court schools, primary schools, community colleges, universities, and in our greater communities.

Presenters:

- Kirin Macapugay, MSW, DSW completion in 2024, Vice-Chair, Commissioner, Professor, CA Commission on APIA Affairs, San Diego City College
- Benjamin Nakamura, MS, Professor, San Diego City College; Regional Director of Culturally Responsive Teaching & Equity, Aspire Public Schools

**B12 – CALIFORNIA ROOM
HARVESTING RADICAL HOPE FROM AANHPI
LITERATURE: WELCOME TO THE APASS
READING CLUB!**

Target Audience: New Professionals

Faculty and students from Los Angeles Harbor College’s APASS (Asian Pacific American Student Success) program will discuss our experiences devising, leading, and participating in the APASS Reading Club – a new initiative that brings the study of AANHPI literature into a student success program. We will briefly review data that demonstrates how studying AANHPI literature can benefit AANHPI student success, and we will describe how we are incorporating brief AANHPI literature workshops into our APASS programming. The APASS Reading Club is a series of monthly explorations of AANHPI short stories that highlight distinctive features and recurring themes of AANHPI literature.

Presenters:

- Karen Amano-Tompkins, M.A., English Professor and APASS Faculty Co-Coordinator, Los Angeles Harbor College
- Christian Lozada, MFA, English Professor & APASS Faculty Co-Coordinator; Theresa Tsao, M.S., APASS Counselor Coordinator

B13 – OAKLAND ROOM

FROM SILOS TO SYNERGY: COALITION FORMATION OF AANAPISI AND HSI

Target Audience: Mid-Level Professionals

Cosumnes River College (CRC), as an MSI (Minority Serving Institution), emphasizes celebrating cultural diversity and encouraging students to embrace their heritage while appreciating and learning other cultures. Designated as AANAPISI and HSI, CRC has leveraged this to strengthen our institutional capacity supporting targeted racial and ethnic communities to benefit all enrolled students. We will share how CRC challenges the status quo of working in silos by embracing collaborative work to best serve underrepresented, underserved, and overlooked intersectionalities of students. Participants will gain invaluable insights and practical tools to effectively support and empower underrepresented students through collaborative engagement with institutional programs.

Presenters:

- Raul Pasamonte, M.A., Director, AANAPISI, Cosumnes River College
- Jessica Mow, M.S. (IP), AANAPISI Success Coach, Cosumnes River College
- Paolo Soriano, M.S., AANAPISI Counselor, Cosumnes River College
- Jose Gonzalez, M.S., Interim Director, HSI, Cosumnes River College
- Melissa Sanchez, M.A., HSI Success Coach, Cosumnes River College
- Emily Salgado, B.A., HSI Success Coach, Cosumnes River College

THURSDAY, APRIL 4, 2024
(2:45 PM TO 3:45 PM)
GROUP C

C1 – EAST 2 HALL

THE PUSH AND PULL OF LEADERSHIP: INSIGHTS INTO SUPPORTING MECHANISMS, ORGANIZATIONAL BARRIERS, AND CHARACTERISTICS OF ASIAN AMERICAN VICE PRESIDENTS AND DIRECTORS LEADING IN MULTIPLE SECTORS

Target Audience: Senior-Level Professionals

During this panel, the speakers will present the findings of a LEAP research study conducted to generate knowledge about the career experiences of VP and

Director level professionals of Asian descent. Insights into the supporting mechanisms, organizational barriers, and characteristics of VPs and Directors leading in multiple sectors (corporate, nonprofit, higher education, and government) will be shared. Takeaways include knowledge of internal and external factors that are keys to success and support leadership trajectories, recommendations to organizations on systems and policies required to develop Asian leaders, and recommendations to individuals who aspire to be in leadership positions.

Presenters:

- Yon Na, Principal Investigator, Leadership Education for Asian Pacifics (LEAP)
- Patricia "Denise" Lopez, Ph.D., Professor of Organizational Psychology, Alliant International University
- Linda Akutagawa, BS, President & CEO, Leadership Education for Asian Pacifics (LEAP)

C2 – GRAND BALLROOM AB

RESEARCH PRACTICE PARTNERSHIPS: ASIAN AMERICAN, NATIVE AMERICAN, AND PACIFIC ISLANDER SERVING INSTITUTIONS (AANAPISI) AND LESSONS LEARNED FROM AN NSF-FUNDED PROJECT

Target Audience: Mid-Level Professionals

The presentation focuses on identifying mechanisms and processes employed by researchers and practitioners in the construction and development of research practice partnerships in the higher education space. Drawing on experiences from an ongoing NSF-Funded project, the panel of faculty, students, and AANAPISI program staff will discuss the development and facilitation of a research practice partnership. Topics include: relationship building, co-constructing a research agenda, establishing roles and opportunities for collaboration on research activities, and using co-design methodologies to advance programmatic level practices. Attendees will have the opportunity to learn how to establish a research practice partnership within AANAPISI program contexts.

Presenters:

- Odorico San Nicolas, M.Ed., Ph.D. Student in Higher and Postsecondary Education, New York University
- Toby Wu, M.A., Ph.D. Student in Educational Leadership and Policy Studies, New York University
- Emily Liebau, M.A. Student in Higher Education and Student Affairs, New York University
- Mike Hoa Nguyen, Ph.D., Assistant Professor, New York University
- Ung-Sang Lee, Ph.D., Assistant Professor, University of Nevada, Las Vegas
- Federick Ngo, Ph.D., Associate Professor, University of Nevada, Las Vegas
- Caroline Hong, Ph.D., Associate Professor and

QCAP Director, Queens College, City University of New York

- Amy Wan, Ph.D., Associate Professor and QCAP Co-Director, Queens College, City University of New York
- Annabelle Park, B.A., QCAP Program Coordinator, Queens College, City University of New York

C3 – GRAND BALLROOM C

GET EQUITABLE PAY TO DO WHAT YOU LOVE: DEVELOP THE COURAGE TO ASK AND TAKE ACTION ON BEHALF OF ALL AANHPI

Target Audience: Undergraduate/Graduate Students

In this workshop, participants will learn why certain marginalized groups (Asians, first-generation students, etc.) have a history of not negotiating their salary. Engage in a lively and frank discussion about the compensation nuances at various higher education systems (CCC, CSU, UC, etc.). Practice researched techniques to prepare effectively for salary negotiation talks. And gain the confidence to advocate for yourself and normalize the conversation for all AANHPIs. The facilitator is a mid-career professional and career counseling master's student who will share salary negotiation best practices gathered for their graduation research project.

Presenters:

- Jane Hsu Southwick, Ed.M, MS Candidate in Career Counseling, San Francisco State University

C4 – GRAND BALLROOM F

CULTIVATING PACIFIC ISLANDER LEADERS OF TOMORROW, TODAY!

Target Audience: Undergraduate/Graduate Students

Today's panel features NHPI leaders who have completed the Pacific Islander Leaders of Tomorrow (PILOT) program hosted by Empowering Pacific Islander Communities (EPIC). PILOT is one of only a few programs in existence dedicated solely to the development of NHPI leaders through culturally responsive practices. Over 10 years, EPIC has cultivated more than 240 NHPI leaders from more than 8 states across the US and representing more than 6 Pacific Island communities. Come hear from PILOT Alumni, talk about their journeys through the program, discuss pathways to leadership, and commitment to advocacy on behalf of NHPI Communities.

Presenters:

- Taelani Camacho, M.A., Program Coordinator,

Empowering Pacific Islander Communities

- Karla Thomas, MPH, Co-Executive Director, Empowering Pacific Islander Communities

C5 – GRAND BALLROOM GH

“DO I BELONG HERE?”: SERVING MULTIRACIAL STUDENTS IN AFFINITY-BASED CENTERS AND SPACES

Target Audience: New Professionals

Roxane Maiko Byrne, Ph.D., is a Multiracial Asian scholar-practitioner and Director of Student Equity and Engagement at Santa Barbara City College. In this session, she will explore how multiracial students navigate their identity and sense of belonging in racial/cultural affinity centers and spaces on college campuses. The concepts of mono and multi-racial identities, monoracism, multiracial microaggressions, multiracial identity, affinity spaces, and student belonging will be covered. Participants will discuss common challenges and issues related to multiracial student experiences on campus and will leave with concrete ideas about how to better serve these students within monoracial and multiracial affinity spaces.

Presenters:

- Roxane Maiko Byrne, Ph.D., Director of Student Equity and Engagement Programs, Santa Barbara City College

C6 – JUNIOR BALLROOM 1

CSU AANHPI COLLECTIVE: AN INITIATIVE FOR CHANGE

Target Audience: Senior-Level Professionals

The CSU is the nation's largest university system. Over 16% of CSU students identify as APIDA, and 14 campuses are eligible for AANAPISIs. Yet, at campus- and system-wide levels, there's a lack of institutionalized support dedicated to APIDA populations. A group of CSU faculty and staff have been convening since 2020 to advocate for more. As such, the Chancellor's Office has provided \$500K and is supporting a centralized AANHPI office. Learn about the challenges and growth opportunities that can be achieved with collective synergy. Attendees can also gain and share updates about CSU-wide efforts.

Presenters:

- Virginia Loh-Hagan, Ed.D., Director, APIDA Center, San Diego State University
- Timothy P. Fong, Professor of Ethnic Studies, Project Director and Principal Investigator, Full Circle Project, California State University, Sacramento
- Simon Kim, Professor of Educational Psychology, Associate Vice President for Research and

C7 – JUNIOR BALLROOM 2 RADICAL HOPE IN ACTION: UNLEASHING THE POWER OF ALLYSHIP WITHIN US

Target Audience: Mid-Level Professionals

Cultivating radical hope is an individual endeavor AND a collective responsibility. This interactive session will explore the transformative power of radical hope within the AANHPI community. We will define radical allyship within and across diverse groups and introduce effective actions allies can take to create brave spaces where radical hope can thrive. Hope is not merely a feeling but a powerful force that, when coupled with deliberate acts of love, courage, and action, has the potential to reshape the landscape of higher education for the better. Together, let's embark on a journey to impact AANHPI leadership at all levels.

Presenters:

- Jody Hironaka-Juteau, Ed.D., Professor, California State University, Fresno
- Vicki Taylor, Ed.D., Deputy Director, Fresno Metro Ministry, Diversity, Equity and Inclusion Consultant, Oputa and Associates

C8 – JUNIOR BALLROOM 3-4 PROGRAM HIGHLIGHTS & PANEL DISCUSSION FROM THE CALIFORNIA COMMUNITY COLLEGES AANHPI STUDENT ACHIEVEMENT PROGRAM

Target Audience: Mid-Level Professionals

The Asian American, Native Hawaiian, and Pacific Islander (AANHPI) Student Achievement Program Central Office team is providing program updates and reflections about the program at the college level through a presentation and panel discussion. The college-led panel will reflect on their college's current support services for AANHPI students, discuss the AANHPI Student Achievement Program's impact within the last year, and share insights for the future. This presentation allows attendees to understand the program's foundational development since April 2023, ask questions, and have a space to connect with college practitioners and discover collaboration points.

Presenters:

- Anthony Amboy, MFA, Director, CCC AANHPI Student Achievement Program, Foundation for California Community Colleges

C9 – ROOM 208 BUILDING BRIDGES: CRAFTING LEADERSHIP BEYOND MENTORSHIP

Target Audience: New Professionals

This session will highlight the transformative experiences of the ASPIRE Peer Mentorship Program, an AANAPISI grant initiative at the University of Minnesota-Twin Cities. Presenters will share practices, lessons learned, and experiences of leading a mentorship program with students that fosters leadership development that has shaped AAPI student leadership on campus. The session will draw upon the shared knowledge of how students apply what they learned in ASPIRE to their own leadership roles and experiences.

Presenters:

- Tev Lee, M.S., Associate Director for APARC, University of Minnesota Twin Cities
- Samyu Shankar, Khai Hoang

C10 – ROOM 210/211 WHAT ARE YOU? CREATING DIALOGUE FOR PATCHWORK IDENTITIES AND MIXED-RACE COMMUNITY BUILDING

Target Audience: New Professionals

Join us for a fishbowl-style facilitated conversation about the mixed-race experience. Presenters will begin by sharing their own experiences and challenges as both students and staffers of mixed-race backgrounds. This will be followed by a period where participants share their own experiences of personal identity formation and instances where higher education has (or has not) provided spaces to foster mixed-race communities. The final portion of the workshop will allow all participants to brainstorm and discuss proposed solutions to the issue of invisibilized multiracial students, and make suggestions as to how to build institutional infrastructure for a growing mixed-race student population.

Presenters:

- Nina Moskowitz, M.A., Learning Specialist, University of California, Berkeley
- Tina Oshima Helmstret, Program Manager, MiraCosta College
- Sinclair Tirona, M.A., Program Manager, Associate Faculty: Communication Studies, MiraCosta College
- Jonathan Ng, M.Ed., UMOJA Coordinator/Counselor, Cuyamaca Community College
- Camille Santana, M.S., Counseling Faculty, Contra Costa Community College

C11 – CALIFORNIA ROOM

REBUILDING SPACES THROUGH HOPE, HEALING, & LOVE: AN INSIDE GLIMPSE ON HOW MT. SAC STUDENTS STRENGTHENED THEIR API COMMUNITY POST-PANDEMIC

Target Audience: Undergraduate/Graduate Students

Arise Peer Mentors share experiences, challenges, and findings in planning & facilitating intentional workshops. Attendees will participate in a discussion on how to better apply culturally relevant spaces in their respective institutions.

Presenters:

- Tutasi Asuega, Program Specialist, Arise Program, Mt. San Antonio College
- Teresa Pham, M.Ed., Educational Advisor, Arise Program, Mt. San Antonio College
- Angelyna Sarrol, Undergraduate Student, Peer Mentor, Arise Program, Mt. San Antonio College
- Ualetenese Togotogo, Undergraduate Student, Peer Mentor, Arise Program, Mt. San Antonio College
- Julianne Uy, Undergraduate Student, Peer Mentor, Arise Program, Mt. San Antonio College

C12 – OAKLAND ROOM

LEGASEEDS OF LOVE: LIFE AND LEADERSHIP IN FILIPINX LEARNING COMMUNITIES

Target Audience: Undergraduate/Graduate Students

This panel is dedicated to uplifting the experiences of student leaders of Filipinx student organizations and learning communities across California. Throughout the 116 California Community Colleges, Filipinx students continuously represent the highest number of Asians within the system. These student leaders of Skyline College's Kababayan, Southwestern College's Bayan Scholars, Napa Valley College's Kasaysayan, and College of San Mateo's Katipunan Learning Communities will speak to their critical work sustaining strong presence of Filipinx community, mobilizing Filipinx students, and how it has been central to their growth in community college.

Presenters:

- Doris Garcia, M.S., Coordinator, Katipunan Learning Community, Katipunan Learning Community, College of San Mateo and Filipinx Community College Collaborative
- Chretienne Isabelle Gomez, Katipunan Learning Community, College of San Mateo
- Mark Jefferson Gobasco, Bayan Scholars Learning Community, Southwestern College
- Nico (Nicole) Agraviador, Kasaysayan Learning Community, Napa Valley College

- David Pумыam, Kababayan Learning Community, Skyline College

THURSDAY, APRIL 4, 2024 (4:00 PM TO 5:00 PM) GROUP D

D1 – EAST 2 HALL

FRAMING CHANGE: EMPOWERING FILIPINO/A/X COMMUNITIES THROUGH PHOTOVOICE

Target Audience: Undergraduate/Graduate Students

This session merges theoretical knowledge and practical tools, inspiring change in academic and Filipino/a/x community spaces using a unique arts-based research methodology. Engage in a concise primer and explore a captivating mini photovoice exhibition showcasing diverse narratives. Participants will gain skills to integrate arts-based research through photovoice into curricula, foster dialogue, and address barriers faced by Filipino/a/x individuals. Photovoice, as documentary photography and owning one's narrative, becomes a personal tool for creative reflection, healing, and envisioning a limitless future. Insights await through 'Photovoice 101,' collaborative research teams, and philosophical discussions and will conclude with participants envisioning transformative actions. Don't miss this opportunity!

Presenters:

- Rangel Velez Zarate, Ed.D., Assistant Professor of English, San Bernardino Valley College

D2 – GRAND BALLROOM AB

“TO ENJOY BLESSINGS AND ENDURE MISFORTUNE TOGETHER.” THE BENEFITS OF COALITION BUILDING AND ALLYSHIP TO SUSTAIN AND ENHANCE THE AANHPI VOICE.

Target Audience: Mid-Level Professionals

In this presentation, we discuss the formation of our Asian Pacific Islander Association (APIA) organization and how it was rooted in ally and mentorship from other local affinity groups. The presenters will share insights on how our coalition-building approach empowered APIA to elevate AANHPI concerns locally and develop

actionable solutions collaboratively. Participants will draw upon the experience of the presenters and develop their own strategies to advance their own local guiding coalitions. This presentation underscores the significance of coalition formation, not only within the AANHPI community, but also through strategic alliances beyond showcasing how shared interests and collective goals are pivotal to organizational growth and sustainability. As we progress, the impact of coalition forming, shaped by the principles of solidarity and shared commitment, will continue to shape the trajectory of APIA.

Presenters:

- Jimmy Grabow, M.S., Faculty Co-Chair of Counseling, Crafton Hills College
- Chloe De Los Reyes, MA English, English Faculty, Crafton Hills College

**D3 – GRAND BALLROOM C
THE POWER OF NETWORKING:
AUTHENTICALLY BUILDING COMMUNITY
AND RELATIONSHIPS**

Target Audience: New Professionals

Networking is an often used and misused word. At its worst, it conjures images of someone trying to shake hands and exchange business cards with as many people as possible. At its best, it's a meaningful introduction that develops into a mutually beneficial relationship. The purpose of this workshop is to expand our definition of networking and develop an understanding of how our Asian and Pacific Islander cultural values impact our attitudes and effectiveness toward networking. You will define goals and strategies that can be lifted through the power of networking.

Presenters:

- Chingcha Vang, M.A., Program Manager, Leadership Education for Asian Pacifics

**D4 – GRAND BALLROOM F
TAKING ACTION WITH DATA AND RESEARCH
ON YOUR SIDE**

Target Audience: Mid-Level Professionals

Advancing initiatives and creating new realities require resources and institutional support. Yes, we have to work hard to make the case and get traction for our ideas. The surest pathway to success is having data, evidence, and a research plan to help us stand out and make it hard for peers, leaders, and funding agencies to refuse. In this workshop, let's explore how to be savvy with data/research, or more precisely, how to collaborate with the data/research people, how to design a program or intervention with evaluation in mind, and how to press forward with radical action.

Presenters:

- Vinh Nguyen, Ph.D., Interim Director of Dual Enrollment, Irvine Valley College
- Kevin Hsu, M.A., Research and Planning Analyst, Irvine Valley College
- Marianne Wolfe, M.S., AANAPISI Director/General Counselor, Irvine Valley College

**D5 – GRAND BALLROOM GH
WHAT I LEARNED IN THERAPY: SHAPING
ASIAN AMERICAN SAFE SPACES FOR
STUDENTS AND STAFF**

Target Audience: New Professionals

As the mental health crisis continues to loom over college campuses, many Asian American students are left without access to healthcare services that appropriately address their unique needs. This presentation addresses how motivational interviewing can aid professional staff by empowering and providing agency for students to make healthy changes. These changes create access for students to improve the overall quality of life during their college careers. New/mid-level professionals can gain skills to better facilitate challenging conversations with students, while also creating safe spaces for vulnerability and encouraging student openness on mental health conversations.

Presenters:

- Satyak Som, Program Coordinator, University of Massachusetts Lowell

**D6 – JUNIOR BALLROOM I
CO-CONSPIRING RADICAL CHANGE
THROUGH STUDENT GOVERNMENT
COALITIONS & ACTIVISM**

Target Audience: Undergraduate/Graduate Students

Student Government possess the power of shared governance and the amplified voices to advocate courageously for campus change. They strive to unite and empower students to embrace and foster campus environments that value and uphold diversity, equity, inclusion, social justice, anti-racism, and accessibility. Join this session to learn more about ways in which one California Community College Associated Students Government has strategized and activated voices from students, academic senates, board members, and state level leaders to co-conspire and implement social justice initiatives to support student success.

Presenters:

- Andi Fejeran Sims, Ed.D., Associate Dean of Humanities and Social Sciences, Student Life, Mt. San Antonio College

- Dani Silva, Associated Students (A.S.) President, Mt. San Antonio College
- Ethan Wang, A.S. Vice President, Mt. San Antonio College
- Tash Buie, A.S. Chief of Staff, Mt. San Antonio College
- Logan Wells, A.S. Cross-Cultural Senator, Mt. San Antonio College
- Cesar Tlatoani Alvarado, Student Trustee, Mt. San Antonio College

- Director, Cosumnes River College
- Jason Sumi, Ed.D., Counseling Faculty, Sierra College
- Susan Vang, Ed.D., Director, EPIC Learning Community, San Joaquin Delta College

**D7 – JUNIOR BALLROOM 2
DEMYSTIFYING THE FULL-TIME FACULTY
HIRING PROCESS IN CALIFORNIA
COMMUNITY COLLEGES**

Target Audience: New Professionals

Learn how the California Community College Full-Time Faculty Hiring process works. From application to interview to interview with the president and everything in between, participants will get strategies and pro-tips on getting a leg up for applying for Full-Time Faculty positions.

Presenters:

- Vanson Nguyen, Ed.D., Instructor, Mathematics, College of Alameda

**D8 – JUNIOR BALLROOM 3-4
SAC-JOQUIN AANAPISI COOPERATIVE:
STRENGTHENING EDUCATIONAL PATHWAYS**

Target Audience: Mid-Level Professionals

Explore the largest AANAPISI Cooperative Grant in this presentation. Discover how this innovative partnership between Sacramento State University with its six neighboring community colleges aims to enhance educational transfer pathways for AANHPI students. Delve into the collaborative vision, shared objectives, and the strategic plan that leverages resources, expertise, and support services. Learn about the grant’s key components, successful models, and implementation strategies, emphasizing its impact on student success and long-term sustainability. Join us to uncover insights into this groundbreaking initiative fostering coalition building and empowering educational opportunities to foster a brighter future for our diverse AANHPI community college students.

Presenters:

- Paolo Soriano, M.S., Counseling Faculty, Cosumnes River College
- Tim Fong, Ph.D., Professor, Ethnic Studies, Director and Principal Investigator, Full Circle Project, Sacramento State
- Raul Pasamonte, M.A., AANAPISI/APIDA HAWKS

**D9 – ROOM 208
TAKING CARE OF OUR OWN: CULTURALLY
NURTURING COUNSELING + WORK-BASED
LEARNING PRACTICES**

Target Audience: Mid-Level Professionals

Counseling and Work-based Learning can be a powerful combination to support our AANHPI students in their academic and career journeys. During this session, we will discuss the factors affecting them, such as model minority myth, mental health challenges, and the rise in anti-AAPI hate. We will share our practices to foster a sense of belonging and community. Examples include culturally responsive counseling, capstone projects, Careering While Asian panels, and healing circles. Come hear from our Kapwa students and their capstone teach-in projects such as APIA Voices.

Presenters:

- Katlin Choi, M.A., Associate Professor/Work Based Learning Coordinator, San Diego Mesa College
- Mia Handojo, Kapwa alumni, San Diego Mesa College
- Faith San Jose, Kapwa alumni, San Diego Mesa College
- Andrew Arevalo, Kapwa alumni/Project Assistant, San Diego Mesa College

**D10 – ROOM 210/211
FLIPPING THE SCRIPT, THE ANTIDOTE IS IN
THE POISON: RE/CLAIMING OUR CULTURAL
AND COMMUNITY WEALTH**

Target Audience: New Professionals

“Flipping the Script” builds upon the APAHE 2023 session, “Owning our Stories: the Critical Role of Narratives & Storytelling.” This year, participants will again engage in rich dialogue and counterstorytelling with the purpose of disrupting oppressive social conditions. The session integrates the theoretical frameworks of Asset-Based Community Development & Script Theory to flip the script and reimagine the K-16 system of schooling with radical hope—leading with love, courage, and action. We look forward to learning alongside you!

Presenters:

- Ben Nakamura, M.A., Regional Director of Culturally Responsive Teaching & Equity, Aspire Public Schools

- Kirin Macapugay, MSW, Professor, San Diego City College, Vice-Chair, CA Commission on APIA Affairs Higher Ed Committee

**D11 – CALIFORNIA ROOM
HARNESSING ERGS FOR DIVERSITY, EQUITY,
AND INCLUSION: LESSONS FROM THE ASIAN
PACIFIC AMERICAN SYSTEMWIDE ALLIANCE
AT UC DAVIS**

Target Audience: Mid-Level Professionals

Discover how UC Davis is championing diversity, equity, and inclusion through Employee Resource Groups (ERGs). Join us for insights into successful strategies, focusing on the Asian Pacific American Systemwide Alliance (APASA), and learn how UC Davis empowers ERGs to drive positive change, fostering a more inclusive campus. This session will illustrate the strategies and organizational structure necessary for effectively supporting ERGs and enabling them to play a crucial role in promoting DEI at UC Davis. Participants will gain insights into the steps the Vice Chancellor’s Office for DEI and APASA have employed to engage the campus community and support DEI.

Presenters:

- Christopher Nguyen Pheneger, M.A., Interim Director of Campus and Community Engagement, University of California, Davis
- Roger Moy, Chair, Asian Pacific American Systemwide Alliance (APASA), Davis Chapter, University of California, Davis
- Robbie Tesnado, Chief Administrative Officer, Vice Chancellor’s Office for Diversity, Equity and Inclusion, University of California, Davis

**FRIDAY, APRIL 5, 2024
(9:30 AM TO 10:30 AM)
GROUP E**

**E1 – EAST 2 HALL
MAKING WAVES: THE RISE OF ASIAN
AMERICA**

Target Audience: Undergraduate/Graduate Students

This panel will preview clips of the upcoming feature documentary Making Waves: The Rise of Asian America, which explores the vital role of ethnic studies in redefining

the narrative and promoting service to communities across the country. Making Waves documents the stories of Asian American activism and efforts to lift ethnic studies as a strategy to address present and future anti-Asian hate. The panelist will discuss contemporary movements to expand Asian American studies content in communities around the country as well as key challenges, including the conflation with critical race theory, book bans, and the ivory tower dynamic.

Presenters:

- Jon Osaki, Filmmaker, Executive Director of the Japanese Community Youth Council (JCYC), JJML Productions, JCYC
- Josh Chuck, Filmmaker

**E2 – GRAND BALLROOM AB
UNDERSTANDING SOUTHEAST ASIAN
STUDENTS’ SENSE OF BELONGING**

Target Audience: New Professionals

Previous research has linked an increased sense of belonging to higher student success metrics like retention and academic achievement. While there are studies of the aggregate level of the Asian American sense of belonging, Southeast Asian American (SEAA) students are often overlooked in the general discourse. In Spring 2023, focus groups were conducted to learn the impact of SEAA faculty and staff on the sense of belonging of 27 Southeast Asian American students. This panel aims to share the results of this study, centering our student voices. The findings highlight specific factors that influence sense of belonging in SEAA students.

Presenters:

- Phitsamay Uy, Ed.D., Associate Professor, University of Massachusetts Lowell
- Cherry Lim, M.A., Program Director, University of Massachusetts Lowell

**E3 – GRAND BALLROOM C
WE ARE MORE THAN CASH COWS:
HUMANIZING INTERNATIONAL STUDENTS**

Target Audience: Undergraduate/Graduate Students

Higher education institutions in the United States have cultivated an influx of international students, many arriving from Asian countries. This can be attributed to institutions strategically targeting the revenue from tuition fees that international students must pay. Sadly, this has contributed to the dehumanization of international students as simply “cash cows.” In response, a team of graduate students took action toward a reimagined environment that views, values, and serves international students through a humanizing lens. Please

join us in a collaborative discussion of practicing radical hope in the present through the restoration of humanity with international students and ourselves.

Presenters:

- Caitlin Song, M.Ed. Student (graduating in May 2024), Viterbi Pre-Engineering Advisor, University of Southern California
- Jin Kim, M.Ed. Student (graduating in May 2024), Viterbi Engineering Diversity Graduate Assistant, University of Southern California
- Ping Sawatyanon, M.Ed. Student (graduating in May 2024), Viterbi Career Connections Graduate Advising Intern, University of Southern California
- Sidney Lim, M.Ed. Student (graduating in May 2024), Viterbi Assistant Director, University of Southern California

E4 – GRAND BALLROOM F
BOBA THERAPY: FINDING RADICAL HOPE AND COMMUNAL CARE TO HEAL FROM INTERGENERATIONAL TRAUMAS FOR OURSELVES, COMMUNITY, AND AANHPI STUDENTS AT THE COMMUNITY COLLEGE

Target Audience: Mid-Level Professionals

Collectively, we have found healing through many visits to the local boba shop across the street from our community college. In these visits, we have discovered affirmation, solidarity, and healing through communal care, radical love, and courage to continue to lead together in support of our AANHPI community. This panel is an invitation to join our conversation, share stories of success, and be in community with one another.

Presenters:

- Cindy N. Phu, Ed.D., Associate Professor in Speech Communication, Pasadena City College

E5 – GRAND BALLROOM GH
DATA DISAGGREGATION IN A MULTI-VERSE WORLD: AANAPISIS AND HSIS

Target Audience: Senior-Level Professionals

How familiar are you with the issues surrounding Double D's? This session will review the intersections of data disaggregation and dual designation (Double D's) and its implications for AANAPISIS. Hear one college's reflection on their experience and perspectives.

Presenters:

- Lisa DiDonato, M.A., Educational Research Assessment Analyst, Mt. San Antonio College
- Aida Cuenza-Uvas, Ed.D., Director, Arise Program (AANHPI SAP), Mt. San Antonio College

E6 – JUNIOR BALLROOM 1
THE POWER IN OUR SEA OF ISLANDS: PACIFIC ISLANDER EDUCATORS IN ETHNIC STUDIES

Target Audience: New Professionals

Thirty years ago, Epeli Hau'ofa wrote "Our Sea of Islands," reminding Pacific Islanders that we are not defined by the smallness of our islands, but the greatness of our ocean. His words have inspired many to challenge the inferior views of the Pacific and remain hopeful in our work for collective liberation. In this panel, three Pacific Islander educators will share their experiences teaching across our sea and in the diaspora – specifically in Ethnic Studies at the high school, community college, and university levels in California.

Presenters:

- Levalasi Loi-On, M.A., AANAPISI Coordinator / Adjunct Faculty, SF State
- Andrew Va'i, M.A., Adjunct Professor, Chabot College
- Jeremiah Sataraka, Ph.D., Assistant Professor, CSU Bakersfield

E7 – JUNIOR BALLROOM 2
KOKUA FROM THE MAINLAND: SENDING PRAYERS AND ACTION TO THOSE IMPACTED BY THE MAUI WILDFIRES

Target Audience: Mid-Level Professionals

The Maui Wildfires was the country's deadliest wildfire in the past 100 years destroying over 2,000 buildings and taking nearly 100 lives. In response, the San Diego Mesa AANAPISI Team organized a listening circle for our AAPI community and allies to grieve, support, and be in dialogue about the impacts of the event. Participants will learn how San Diego Mesa College worked with local Hawaiians to share the historical context of the Hawaiian people along with traditional grieving practices to help students navigate their feelings and their mental health in community and solidarity.

Presenters:

- Leland Simpliciano, AANAPISI Director, San Diego Mesa College
- Ella deCastro Baron, MFA, Kapwa Instructor, San Diego Mesa College
- Desiree Werner, Student, San Diego Mesa College

E8 – JUNIOR BALLROOM 3-4

REVOLUTIONARY LOVE AND RADICAL HOPE: TRANSFORMATIVE PRACTICES FOR OUR FAMILIES, CLASSROOMS, AND COMMUNITIES

Target Audience: Undergraduate/Graduate Students

Participants will be invited to reflect and dialogue with one another to identify practices of Revolutionary Love (Kaur, 2020) and radical hope that support AANAPHIs in three sets of relationships: our families, classrooms, and communities. Both Revolutionary Love and radical hope are more than a feeling; they are a rigorous set of practices that require us to reckon with and transform injustice. In each of these relationships, we will focus on generating strategies for courageous hope and action, while nurturing our individual and collective healing, well-being, and joy.

Presenters:

- Melissa Ann Canlas, Ed.D., Assistant Professor, University of San Francisco
- Matilda Tavares, M.A., Senior Associate Director, Alumni Engagement, Doctoral Student, University of San Francisco
- GraceAnn Cadiz, M.A.; Doctoral Student, University of San Francisco

E9 – ROOM 201

A MOMENT TO HEAL IN SUPPORT OF STUDENTS, THEIR MENTAL HEALTH AND SUCCESS

Target Audience: Undergraduate/Graduate Students

We argue that poetry is underutilized, yet it is both an innovative and a long-established practice with positive benefits for addressing individual and community-level pain (Xiang 2020, Lepore and Smyth 2002; Eum and Yim 2015). Workshop topics covered will include experiences with anti-Asian bullying on college campuses, discussion regarding school-level resources and training devoted to anti-Asian animus, and exercises in poetry writing and reading as ways by which to achieve learning outcomes of knowing ways to use poetry for expression, self-reflection and processing the effects of anti-Asian discrimination as individuals and as a community.

Presenters:

- Mai-Nhung Le, DrPH, MPH Public Health, Executive Director of Asian American Collective Action for Racial Equity and Solidarity (AA CARES), San Francisco State University
- Loan Le, PhD Political Science, Assistant Professor, San Francisco State University

E10 – ROOM 208

“SERVINGNESS” FOR NATIVE HAWAIIAN AND PACIFIC ISLANDER STUDENTS: LEADERSHIP STRATEGIES FOR ADVOCACY, FUNDING, AND PRACTICE IN HIGHER EDUCATION

Target Audience: Mid-Level Professionals

In Fall 2022, CSU San Marcos (CSUSM) launched its APIDA Success Initiative, providing dedicated spaces and services for APIDA students, faculty, staff, and community members, and hiring the inaugural APIDA Student Success Coordinator in 2023. Yet these strides to support APIDA students started with radical courage to love first those least served: NHPI students. The workshop offers leadership actions developed through the CSU Student Success Network to reimagine sustainable “servingness” strategies that support NHPI students – and all students – on broad-access public campuses, with vital collaborations across community colleges, and among grassroots and national non-profit organizations, for significant community engagement.

Presenters:

- Theresa C. Suarez, Ph.D., Associate Professor/ Project Director/ Primary Investigator, Cal State University San Marcos
- Mae Talicuran, M.A., Assistant Director of Special Projects, Office of Student Affairs; President, CSUSM APIDA Faculty/Staff Association
- Cheryl Landin, M.A., Co-Chair APIDA Student Success Initiative; Assistant Director of Strategic Initiatives, CSUSM Office of Inclusive Excellence; Interim Director CSUSM Cross Cultural Center
- Demeturie Toso-Lafaele Gogue, Ph.D. Candidate, CSU Chancellor’s Doctoral Incentive Program (CDIP), CSUSM Fellow (’23-’24), UCLA School of Education & Information Studies
- Allura Murray-Cruz, APIDA Student Success Coordinator, Office of Student Life

E11 – ROOM 210/211

DON’T COMPETE, COLLABORATE

Target Audience: Mid-Level Professionals

Most of us are higher education professionals who help and support students throughout their personal, academic/educational, and life journeys. Yet, we’ve all been in situations where we are pitted against other programs, initiatives, projects, activities, and even each other. Why? Resources are limited. Not everyone can have some of the limited available funds. What can you do? What should you do? Come to this session ready to chat. Learn from practitioners with experience building and uplifting programs through allyship and shared resources. Let’s gather in community to cultivate radical

hope, courage and take action back at our schools.

Presenters:

- Marianne Wolfe, M.S., AANAPISI Director, General Counselor, Irvine Valley College
- Eddie Tiongson, M.A., Communication/Speech Faculty, Irvine Valley College

**FRIDAY, APRIL 5, 2024
(10:45 AM TO 11:45 AM)
GROUP F**

**E12 – CALIFORNIA ROOM
HOW TO TALK ABOUT MENTAL HEALTH WITH
YOUR AAPI FAMILIES: ADDRESSING STIGMAS
AND FINDING CARE**

Target Audience: Undergraduate/Graduate Students

The workshop will address the complex topic of mental health among AAPI college students, the stigma surrounding it, and how we can talk about it with our families and helpful practices to find resources on and off campus.

Presenters:

- L Dunham & Vivian Lee, Undergrad Students at Irvine Valley College, Peer Mentors, ELEVATE AAPI, Irvine Valley College
- Harrison Shin, Program Coordinator, ELEVATE AAPI, Irvine Valley College

**F1 – EAST 2 HALL
LEADERSHIP: A CONVERSATION WITH AAPI
CEOS**

Target Audience: Mid-Level Professionals

Join a distinguished panel of AAPI CEOs for a frank and real conversation surrounding promotion and politics, and the opportunities being at the leadership table.

Presenters:

- Frank Chong, Ed.D., Emeritus President/ Superintendent, Santa Rosa Junior College
- Tammeil Gilkerson, Chancellor, Peralta Community College District
- Char Perlas, President/Superintendent, College of the Siskiyous
- Whitney Yakamura, Chancellor, Coast Community College District

**E13 – OAKLAND ROOM
DELTA COLLEGE IS IN THE HEART**

Target Audience: Mid-Level Professionals

Dr. Dawn Bohulano Mabalon was a respected historian, author, filmmaker, poet, chef, baker, community leader, and activist who was grounded in love for the Filipina/o American community in San Joaquin county. Five years after writing *Little Manila is in the Heart*, Dr. Mabalon suddenly passed away in 2018. In her legacy, Debra Louie, Dr. Cirian Villavicencio, and Janice Takahashi decided it was time for San Joaquin Delta College to honor leaders who represented and looked like the student body. On November 2nd, 2023, 3 years after many trials and tribulations, the North Forum was renamed the Dawn Mabalon Forum.

Presenters:

- Susan Vang, M.S., Director of EPICenter, San Joaquin Delta College
- Debra Louie, Counselor, San Joaquin Delta College
- Cirian Villavicencio, Faculty, San Joaquin Delta College

**F2 – GRAND BALLROOM AB
ASIAN AMERICAN WOMEN LEADERS IN
HIGHER EDUCATION: LEADING WITH LOVE,
COURAGE, AND ACTION**

Target Audience: Mid-Level Professionals

This panel will feature Asian American women and non-binary leaders in higher education who will share how they have led with love, courage, and action. They will offer advice and perspective to others who may want to consider leadership opportunities.

Presenters:

- Grace J. Yoo, Ph.D., Dean of the College of Ethnic Studies, San Francisco State University
- Luoluo Hong, PhD, MPH, Vice President for Student Engagement & Well-Being, Georgia Tech
- Ellen Junn, Ph.D. President Emerita, Cal State Stanislaus
- Mi-Sook Kim, Ph.D., Dean, College of Health, Human Services & Nursing, Cal State Dominguez Hills
- Wendy Ng, Ph.D, Dean, College of Letters, Arts and Social Sciences, Cal State East Bay
- Celine Parrenas-Shimizu, Dean, Division of Arts, University of California, Santa Cruz
- Grace J. Yoo, Ph.D., MPH, Dean, College of Ethnic Studies, San Francisco State University

F3 – GRAND BALLROOM C FINDING THE SWEET SPOT WITH COMMUNITY SUPPORT GROUPS - A COLLABORATIVE APPROACH TO INCREASING MENTAL HEALTH ACCESS FOR AANHPI STUDENTS

Target Audience: New Professionals

Laney College's Mental Health and the Asian Pacific Islander Student Success programs designed and implemented a mental health support group in response to two factors: the rise in anti-Asian violence 2 years ago and the recent CDC findings on the maddening disparity in utilization of mental health services by Asians in the US. We will share our cautiously optimistic findings 1.5 years into implementation, as well as perspectives from student participants and facilitators.

Presenters:

- Susan Yee, M.A., Mental Health Specialist, Laney College
- Sharon Quach, MA in Counseling, Academic Counseling Laney College
- Phoumy Sayavong, Ph.D., Sr. Researcher Berkeley City College
- David Lee, Ed.D., Director of APASS at Laney College

F4 – GRAND BALLROOM F RE-IMAGINING TRANSFORMATIVE LEADERSHIP IN HIGHER ED: LESSONS OF SOLIDARITY FROM SOCIAL MOVEMENTS

Target Audience: New Professionals

From the Third World Liberation Front to the movement for a free Palestine, there are powerful lessons of collective courage and action to be learned from social movements. This workshop will review key movements and their history of coalition building and collective action. Participants will be reminded of Asian American activism throughout history, reflect on the impacts of colonization on our AANHPI identities, and our responsibility to courageously challenge our complacencies as we strengthen meaningful cross-cultural solidarity work. This workshop will conclude with reflections towards transformative leadership and building collective care as a means of preservation for our communities.

Presenters:

- Vivian Lin, M.S., Academic Coordinator/ELL Success Coach, Bunker Hill Community College

F5 – GRAND BALLROOM GH FROM AANAPISI PROGRAM TO AANAPISI INSTITUTION

Target Audience: Mid-Level Professionals

This workshop will explore how Sacramento State's AANAPISI program, the Full Circle Project, has formed coalitions within the Asian Pacific Islander Desi American Faculty & Staff Association and across other groups to develop an AANAPISI Identity and expand capacity to serve AANAPISI students. Attendees will be able to reflect on what coalition building looks like on their own campus, identify strategies to build strong coalitions across campus, and construct a plan of action for how to build allyship and sustain support for AANHPI staff, faculty, and students in an AANAPISI Institution.

Presenters:

- Marietess Masulit, M.A., Project Manager, Title IX, Office for Equal Opportunity, Sacramento State University
- Timothy Fong, Ph.D., Professor Ethnic Studies & Director Full Circle Project, Sacramento State University
- Hnou Lee, M.S., Full Circle Project Advising & Outreach Coordinator, Sacramento State University
- Maryann Wong, M.A., Research Specialist, Institute for Social Research, Sacramento State University
- Racquel Reber, Educational Opportunity Program Senior Lead Summer Transitions, Sacramento State University

F6 – JUNIOR BALLROOM 1 BEYOND THE BUBBLE BATH: A CRITICAL APPROACH TO SELF-CARE

Target Audience: New Professionals

In this session, we will think critically about the intersections of self-care, colonialism, and higher education through interactive dialogue, stories, and research. When faced with burned-out staff, institutions increase messaging about self-care as a remedy. But the current self-care paradigm is rooted in colonialism; self-care today centers consumerism and whiteness, which is not helpful for communities of color. Together, we will reimagine our self-care praxis and move towards a definition that honors our needs as AANHPI higher education practitioners, and embraces radical self-love. By decolonizing our self-care, we can begin to reclaim power in caring for ourselves and our communities.

Presenters:

- Sarah Rost, M.A., Learning Specialist and Doctoral Student, University of Massachusetts Amherst

F7 – JUNIOR BALLROOM 2

EMBODYING RACIAL HOPE & LOVE THROUGH CURA PERSONALIS: HOW TO INCREASE ACCESS, EQUITY & SUCCESS FOR AANHPI STUDENTS THROUGH INDIVIDUALIZED HOLISTIC STUDENT SUPPORT

Target Audience: Mid-Level Professionals

What is “cura personalis” and how does this Jesuit value align with the mission to increase access, equity, and student success? Systemic barriers like the model minority myth and lack of disaggregated data can often lead our AANHPI students to feeling unseen, unheard, and unsupported despite institutional efforts to provide holistic student success. Cura personalis (“care for the whole person”) provides students with individualized transformative support to reach their full potential. Come learn about cura personalis, how it connects to radical hope and leading with love, and how to incorporate it into your individual and institutional practices!

Presenters:

- Jinni Pradhan, Ph.D., Inaugural Program Director, Center for Asian Pacific Islander Student Empowerment, San Jose State University
- Mary Q. Tran, M.Ed., Inaugural Program Director, Center for Asian Pacific Islander Student Empowerment, San Jose State University

F8 – JUNIOR BALLROOM 3-4

ENGAGING HEARTS AND MINDS: CREATING INCLUSIVE SPACES FOR STUDENTS WITH DISABILITIES

Target Audience: Mid-Level Professionals

Explore the role of active engagement in transforming the educational experience for students with disabilities in this insightful session. Confronting systemic barriers and biases, we’ll discuss how empathy and a commitment to inclusivity can break down these challenges. Drawing from my experiences as a Deaf Asian woman of color and an immigrant, I’ll share strategies for educators to create nurturing, inclusive environments. Join us to learn how to effectively recognize and support the diverse needs of students with disabilities, ensuring they feel valued in our educational spaces.

Presenters:

- Gwen Gallagher, M.S. Ed and Doctoral Student, Lead Faculty ASL Professor ASL/English Interpreting Program, Solano Community College

F9 – ROOM 201

VOICES FROM ANOTHER HIDDEN SOUTHEAST ASIAN AMERICAN GROUP: LAO AMERICAN BARRIERS AND BRIDGES TO ACADEMIC SUCCESS

Target Audience: Mid-Level Professionals

Due to the Model Minority Myth many Southeast Asian American voices are silenced or not heard fully about their academic barriers and bridges. Barriers lead to one of the lowest college graduation rates but they also have many barriers. This talk will be on Lao American Academic barriers and bridges and would be of interest to anyone interested in Asian Americans Student success especially Southeast Asian Americans.

Presenters:

- Jenny Banh, Ph.D., Assoc.Prof. and ASAM Coordinator, California State University, Fresno

F10 – ROOM 208

TRAJECTORIES OF HOPE: FROM ETHNIC STUDENT ORGANIZATION LEADERS TO HIGHER EDUCATION PROFESSIONALS

Target Audience: Undergraduate/Graduate Students

This session examines how participating in ethnic student organizations creates trajectories of hope and the impact it has on careers in higher education. As Kababayan at UCI celebrates its 50th anniversary, the presenters will share the impact of their experience as student leaders in Kababayan on their careers in higher education. Presenters will examine how their practices as student leaders provided a foundation to continue supporting the community in their higher education careers. Participants will have the opportunity to reflect on how their student leadership experiences enable them to embody radical hope in their professional aspirations after college.

Presenters:

- Kimberly Boral, Project & Policy Analyst, Undergraduate Admissions, UC Office of the President
- Doris Garcia, M.S., Counselor, Promise Scholars/Coordinator, Katipunan Learning Community, College of San Mateo
- Arman Liwanag, M.Ed., Senior College Adviser, College of Letters & Science, UC Berkeley

F11 – ROOM 210/211
WITH HELLA ALOFA/'OFA: HOW NESIANS UNITE, A PASIFIKA STUDENT-LED CLUB, SPARKED A LEARNING COMMUNITY
Target Audience: Undergraduate/Graduate Students

Join us in learning how a student-led club, Nesians Unite (NU), sparked the building of a Learning Community at Chabot College. The intent of creating NU is to be inclusive of our Melanesian, Micronesian and Polynesian communities. As a student-led club, NU aimed to increase retention and transfer rates of Native Hawaiian Pacific Islander students, with guidance from other Pasifika Program Directors, Dr. Finau Tovo from MANA at College of San Mateo, and Dr. Tavita Palaita from VĀSĀ at City College of San Francisco. With Chabot College being a grantee of AANAPISI, NU is now becoming a Learning Community.

Presenters:

- Arasi Hamilton, Nesians Unite Program Coordinator, Chabot College
- Amelia Sete, Nesians Unite Counseling-Intern, Chabot College
- Andrew Va'i, M.A., Pacific Islands/Oceania Ethnic Studies Professor, Chabot College
- Angel Niutoa, Nesians Unite Co-President, Chabot College
- Maya Toluk Ito, Academic Pathways & Student Success Outreach Specialist, Chabot College
- Wynntn Hindenburg, Nesians Unite Student Assistant, Chabot College

F12 – CALIFORNIA ROOM
EXPERIENCING THE EDD DOCTORATE AS A NATIVE: A PANEL DISCUSSION ABOUT CHALLENGING ACADEMIC NORMS OF RESEARCH PRACTICE.

Target Audience: Undergraduate/Graduate Students

In an era where Critical Race Theory, LGBTQ+ , and other protests against conservative thought have been opposed and silenced, this panel reflects on the significance of Indigenous theories, community-guided inquiries, and Native research methodologies that at times, radically contest standard research practice and thought. The session will also lovingly hold space for questions from the audience about how to support the growth of Native doctorate candidates to become social justice leaders within and for their communities.

Presenters:

- Walter Kahumoku III, Ph.D., Director, EdD, College of Education, UH Mānoa, University of Hawaii, Mānoa

- Kēhau Kahanu, MEd, Academic Support, UH Mānoa/EdD program
- Kaimipono Kaiwi, Masters in English, Department Head, Kamehameha Schools
- Kāhea Naeole, EdD, Director of Financial Aid, UH Maui
- Cathy Ikeda, EdD, Associate Professor, UH West Oahu
- Wela Wahilani, MEd, Program Director, UH West Oahu

F13 – OAKLAND ROOM
MEETING TO CONTINUE BUILDING AND ENHANCING APIDA COMMUNITY AT YOUR INSTITUTION

Target Audience:Mid-Level Professionals

Much of our efforts are spent providing students with a great experience, and rightfully so. However, do we put enough effort into ensuring a great experience, a voice and presence, and advocacy for ourselves as employees, especially, our APIDA professionals. Many of us have seen and/or felt the need for further identity development and advocacy for ourselves and our colleagues. Join us for a meeting on how APIDA employee associations can help our campus communities thrive. We will be focusing on ideas to enhance social aspects, community building, advocacy, and professional development for APIDA communities at your institutions.

Presenters:

- Takeo Kubo, M.A., Director, Financial Aid & Scholarship Programs, San Jose City College
- Blake Balajadia, Director, Student Development & Activities, San Jose City College
- Brandon Yanari, M.A, Director, Student Outreach & Recruitment, Evergreen Valley College

FRIDAY, APRIL 5, 2024
(1:30 PM TO 2:30 PM)
GROUP G

G1 – EAST 2 HALL
BY THE SWIPING OF MY FINGERS AND THE CLICKING OF MY THUMBS SOMETHING WICKED THIS WAY COMES: AN ADULT'S GUIDE TO HELPING STUDENTS NAVIGATE THE HOUSE OF SMOKE AND MIRRORS (A.K.A. SOCIAL MEDIA)

Target Audience: Mid-Level Professionals

Ray Bradbury's classic 1962 novel *Something Wicked This Way Comes* describes a sinister carnival that arrives mysteriously in town complete with funhouse mirrors, impossible promises, and dark intentions to ensnare people's souls. Similarly, online social media arrived on the scene with great promise and fanfare but instead had dire consequences for our youth. This session details a research study to identify measurable and teachable concepts that help students understand that there are necessary components of face-to-face human interaction that are a biological necessity (i.e. like food or water) that cannot simply be replaced by convenient online alternatives.

Presenters:

- Edmond Lee, M.A., GEAR UP Director, University of Hawaii at Manoa
- Richard Okubo

G2 – GRAND BALLROOM AB COUNTERING THE SHY GIRL NARRATIVE: LEVERAGING OUR STORIES TO TAKE UP SPACE AND EXPLORE OUR POSSIBILITIES

Target Audience: Undergraduate/Graduate Students

Asian American women (AAW) are labeled as shy, timid, or submissive. These stereotypes can disrupt efforts for AAW to sustain themselves in their journey towards leadership, among marginalizing systems. This interactive workshop will offer authentic narratives from AAW higher education leaders that counter normalized white male leadership standards. Participants will then be guided through a reflective activity and given space to share in hopes of emphasizing love for ourselves, our strengths, and our community, promoting the courage to own our story, and continue empowering others to take action and lead the way for others in the AANHPI community.

Presenters:

- Alexia Theresa Pimentel, M.S.Ed., Student Services Director, UC Berkeley
- Ayra Valerie Agluba, Graduate Assistant, Doctoral Program in Educational Leadership & Master's Candidate, Higher Education Administration and Leadership, both at Fresno State

G3 – GRAND BALLROOM C LAYERS OF IDENTITY: UNPACKING SOUTHEAST ASIAN HERITAGE IN STEPS

Target Audience: New Professionals

In this one-hour lecture/workshop, I will be sharing a

little about my own personal journey into research to rediscover my Chinese Cambodian heritage. My workshop informs participants about which methodologies of research helped me as a 2nd generation Asian American to dive deep into my family's lineage by way of genealogical, cultural & spiritual understanding. As scholars, if we are able to understand the layers of our own ethnic identities, we may then have capacity to better serve our own communities & collaborate with others to find success.

Presenters:

- Ryan Samn, Student Life Assistant, Skyline College

G4 – GRAND BALLROOM F NAVIGATING INSTITUTIONAL TURBULENCE: UPHOLDING VALUES OF INCLUSION, LOVE, TEAMWORK, AND KINDNESS

Target Audience: Mid-Level Professionals

In an academic landscape predominantly influenced by white culture, we, as Asian-Pacific Islander women, steadfastly uphold our core values, navigating through turbulence and conflict with unwavering commitment. Our workshop for APAHE 2024 National Conference aims to delve into the critical theme of "Radical Hope: Leading with Love, Courage, and Action" with a particular focus on preserving our foundational values amid institutional turbulence.

Presenters:

- Rolita Flores Ezeonu, Ed.D., Vice President of Instruction, Green River College
- Tsai-En Cheng, M.A., Dean of Branch Locations for Academic and Program Development, Green River College
- Elaine Stricklin, Executive Assistant to the Office of the Vice President of Instruction, Green River College

G5 – GRAND BALLROOM GH PRACTICING HOPE: COMBATting PESSIMISM AND BURNOUT IN THE CLIMATE MOVEMENT

Target Audience: Undergraduate/Graduate Students

Crisis after crisis takes an enormous toll on our mental health, and leads to the burnout of students, academics, and activists. Often, this can erode our hope, and can cause us to fall victim to pessimism. This is dangerous to climate and racial justice movements as it weakens our faith that we can change inequitable systems. To combat pessimism as a tool of capitalism, it is imperative that we create spaces to acknowledge that our community is hurting, and to heal together as a collective. Following

Marama Kaba, this workshop invites us to recenter hope in our work and lives.

Presenters:

- Jed Lee, Wellness and Environmental Justice Community Engagement Manager, Student Environmental Resource Center, UC Berkeley

**G6 – JUNIOR BALLROOM 1
HOW ADVISORS ARE TRANSFORMING UC
DAVIS INTO THE ALLY STUDENTS NEED**

Target Audience: Mid-Level Professionals

Developing Deeper Advising Relationships (DDAR) is a foundational development training program, focused on putting students first and utilizes a social justice and DEI lens, for every advisor on campus and it is paving the way for specific community needs like those of AANHPI students to finally make it into central institutional decision making.

Presenters:

- Eric Sanchez, M.A., Director, Diversity, Equity and Inclusion Education Program, UC Davis
- Christopher Nguyen Pheneger, M.A., Interim Director of Campus Community Engagement, UC Davis
- Kayton Carter, M.A., Executive Director of Academic Advising Enrichment, UC Davis

**G7 – JUNIOR BALLROOM 2
ACCESS, RELEVANCE, COMMUNITY (ARC):
ETHNIC STUDIES TRANSFER PATHWAYS
BETWEEN SF STATE AND SAN MATEO
COMMUNITY COLLEGE DISTRICT**

Target Audience: Undergraduate/Graduate Students

The Access, Relevance, and Community (ARC) Transfer Pathways Initiative is a collaboration between the College of Ethnic Studies at San Francisco State University (SFSU) and San Mateo County Community College District (SMCCCD). As an AANAPISI project, we work together to address student belonging, transfer student enrollment, and career readiness. In this panel, student peer mentors and staff from SFSU, Cañada College, College of San Mateo, and Skyline College will discuss their work building supportive communities at each school.

Presenters:

- Levalasi Loi-On, M.A., AANAPISI Program Coordinator, SF State
- Arlene Daus-Magbual, Ed.D, Assistant Professor, SF State
- Christine Su, Ph.D, AANAPISI Coordinator, College

of San Mateo

- Liza Erpelo, Ed.D, Professor, Skyline College
- Mary Ho, Director of Post-Secondary Success, Ed.D, Cañada College

**G8 – JUNIOR BALLROOM 3-4
COALITIONAL RUBRICS UNDER CONDITIONS
OF RESOURCE SCARCITY: CURRICULAR AND
CO-CURRICULAR RETENTION FRAMEWORKS
FOR AANHPI AND NATIVE STUDENTS**

Target Audience: Senior-Level Professionals

This workshop will first offer a background and overview of the demographics and retention outlook for AANHPI and Native students at SJSU. Presenters will then demonstrate how they were able to leverage pilot studies and data alongside anti-Asian and anti-Native racism to make a case that warrants such investments in both critical and inclusive curricula as well as key co-curricular programming to improve campus climate and retention outcomes for AANHPI and Native students.

Presenters:

- Yvonne Y. Kwan, Ph.D., Associate Professor of Asian American Studies, San Jose State University
- Elisa Aquino, Program Director of Native American Indigenous Student Success Center, San Jose State University
- Kerri Malloy, Ph.D., Assistant Professor of Native American and Indigenous Studies, San Jose State University
- Soma de Bourbon, Ph.D., Assistant Professor of Sociology, San Jose State University
- Trung Nguyen, Ph.D., Assistant Professor of Asian American Studies, San Jose State University
- Jinni Pradhan, Ph.D., Program Director, Center for Asian Pacific Islander Student Empowerment, San Jose State University
- Edwin Tan, Ph.D., Director of Advocacy and Community Relations, San Jose State University

**G9 – ROOM 201
LEADING WITH LOVE, HOLDING COURAGE,
AND ACTION ADVOCACY: ASIAN PACIFIC
ISLANDER STAFF ASSOCIATION IN ACTION AT
UC OFFICE OF THE PRESIDENT**

Target Audience: Mid-Level Professionals

Come learn and take part in a discussion about how AAPI staff at UC can help empower ourselves across the system. Discuss how we can improve and work strategically across the system to better advocate for our AANAPISI students, and staff, and for better equity. We will discuss how our Employee Group has advocated

for better representation and policy changes.

Presenters:

- Tony Yang, Ph.D., Project Policy Analyst, University of California, Office of the President
- Barbara Hui, Ph.D., Senior Software Developer, University of California, Office of the President

G10 – ROOM 208

THE IMPORTANCE OF ALLYSHIP IN NAVIGATING ETHNIC STUDIES WARS

Target Audience: Senior-Level Professionals

An alliance of Fresno City College’s faculty representing Asian American Studies, American Indian Studies, African American Studies, and Chicana-Latinx Studies will discuss the importance of Ethnic Studies as an interdisciplinary field that can offer life-changing benefits to historically marginalized students. With the recent passage of laws mandating ethnic studies courses for all students in California’s public higher education institutions, panelists will also discuss the issues, challenges, and opportunities in implementing the new Area F graduation requirement. Takeaways will include ideas and strategies that may inform other faculty, staff, and administrators in navigating similar paths on their own campuses.

Presenters:

- Gena Lew Gong, Ed.D., Instructor/Coordinator, Asian American Studies Program, Fresno City College
- Victoria Navarro Benavides, Ph.D., Instructor, Chicana-Latinx Studies, Fresno City College
- Auguste Kouadio, M.A., Instructor, African American Studies, Fresno City College
- Erik Escovedo, M.A., Instructor, American Indian Studies, Fresno City College

G11 – ROOM 210/211

GETTING AHEAD: SKILLS FOR CAREER SUCCESS

Target Audience: New Professionals

Having the right mindset, knowledge, and skills to navigate career growth is very important. This workshop offers the perfect opportunity to explore the six skills needed to tackle current and future challenges in a meaningful way. This framework incorporates the unique blend of values, beliefs, and attitudes drawn from our multicultural heritage as Asian and Pacific Islanders.

Presenters:

- Alexander Cena, Chief Program Officer, Leadership Education for Asian Pacifics

G12 – CALIFORNIA ROOM COMMUNITY TO CAPITOL ADVOCACY FRAMEWORK, A GUIDE FOR STATEWIDE HIGHER EDUCATION INITIATIVES

Target Audience: Undergraduate/Graduate Students

This workshop, conducted by the Chair and Vice-Chair of the California Commission on Asian Pacific Islander Affairs Higher Education Committee and the Senate Consultant for the California Asian American & Pacific Islander Legislative Caucus (AAPILC), will introduce the Community to Capitol Advocacy Framework (CCAF), to guide advocates on making legislative changes to benefit Asian American, Native Hawaiian, and Pacific Islander (AANHPI) students at the statewide level. This session will include suggestions on weaving best practices, including community-based advocacy, strategic partnerships, coalition building, cross-stakeholder collaboration, and engagement with public representatives for effective advocacy.

Presenters:

- Kirin Macapugay, M.S., Vice-Chair, Higher Education Committee, California Commission on APIA Affairs
- Isa Whalen, M.S., Senate Consultant, CA Asian American and Pacific Islander Legislative Caucus,
- Cirian Villavicencio, Ed.D, Chair, CA Commission on Asian Pacific Islander Affairs Higher Education Committee

G13 – OAKLAND ROOM “GAY-SIAN”: NAVIGATING HIGHER EDUCATION AS A QUEER IDENTIFIED AAPI LEADER

Target Audience: New Professionals

This session aims to create a supportive space for dialogue, learning, and empowerment as we explore the challenges and triumphs of individuals who navigate multiple identities within the academic landscape through the lens of Queer and AAPI Identities. The sharing of personal narratives can be empowering and validating. Come listen to one senior leader’s journey to learn strategies and insights on how to thrive in leadership roles while embracing one’s authentic self. Participants will gain valuable perspectives on fostering inclusivity, dismantling stereotypes, and advocating for change within the higher education community.

Presenters:

- Cecil Chik, Ed.D., Assistant Vice President Diversity, Inclusion, and Equity, Cal State Fullerton

FRIDAY, APRIL 5, 2024 (2:45 PM TO 3:45 PM) GROUP H

H1 – EAST 2 HALL

BLOCK BY BLOCK: THE STRUGGLE TO BUILD THE CHINATOWN/NORTH BEACH CAMPUS AT CITY COLLEGE OF SAN FRANCISCO

Target Audience: Senior-Level Professionals

Block by Block is a powerful 30-minute documentary that highlights the 50-year struggle to build a permanent Chinatown/Beach campus in San Francisco. The story reveals the interplay between the AAPI community, higher education, politics, and powerful business interests in SF. This documentary embodies the themes of this year's APAHE conference.

This struggle required the radical hope of its supporters and took love, courage, and action to triumph and prevail. The panel discussion to follow will be comprised of CCSF leaders, community-based organizations, and APAHE founders, who will be on hand to reflect on the struggle and provide some pearls of wisdom on how to advocate for change "block by block."

Presenters:

- Frank Chong, Ed.D., Former Dean of Student Affairs, City College of San Francisco
- Henry Der, Former Executive Director of Chinese for Affirmative Action

H2 – GRAND BALLROOM AB CAMPUS CLIMATE AND SENSE OF BELONGING ON CAMPUS: INTEGRATING DATA TO SUPPORT AANHPI'S

Target Audience: Mid-Level Professionals

Evaluating the atmosphere on campus is a crucial element in comprehending the perseverance and contentment of every student. This study expands upon existing research by exploring how the perceptions of the campus relate to the overall sense of belonging among Asian American students in a diverse community college setting. The data and insights collected from this study at Golden West College can aid faculty and administrators in enhancing support mechanisms for this expanding undergraduate student demographic, promoting a more fulfilling and successful college experience.

Presenters:

- Tiffany Laiyin Lao, M.A., Professor of ESL, Golden West College

H3 – GRAND BALLROOM C 2-YEAR VS. 4-YEAR INSTITUTIONS: EXPLORING DIVERSITY, EQUITY, AND INCLUSION (DEI) WORK THROUGH AN ACADEMIC AND STUDENT AFFAIRS LENS

Target Audience: Undergraduate/Graduate
Students

In this session, we will be exploring diversity and identity work through the lens of a student affairs professional at a 4-year institution and a counselor/faculty at a 2-year institution. Presenters will share their experiences navigating the different institutions with key differences and similarities to help attendees interested in diversity, equity, and inclusion (DEI) and cultural identity work to navigate their own career trajectories in higher education.

Presenters:

- Anh Le, M.Ed., Assistant Dean, Mentorship Programs & Student Development, Claremont McKenna College
- Kevin Dimatulac, M.Ed., Tenured Equity Counselor, Glendale Community College

H4 – GRAND BALLROOM F THREADS OF LOVE: EXPLORING HOBBIES FOR MENTAL HEALTH AND WELL-BEING

Target Audience: Mid-Level Professionals

This workshop encourages participants to reflect on and explore the positive impact hobbies can have on mental health. The presenter will weave a narrative of their personal journey beyond the professional realm, exploring hobbies such as puppetry and needle felting. This narrative will intertwine with themes of self-care, addressing perfectionism, and fostering the courage to embrace continuous learning. It is a journey that can create a ripple effect of compassion towards others. Participants will also have an opportunity to brainstorm actionable steps for prioritizing their well-being.

Presenters:

- Julie Nguyen, Ed.D., Director of Student Career Development, Boston University Metropolitan College

H5 – GRAND BALLROOM GH

“YOUR LIBERATION IS BOUND UP WITH MINE: HOW DISAGGREGATION CAN UPLIFT THE SOUTHEAST ASIAN COMMUNITY”

Target Audience: Mid-Level Professionals

Southeast Asian identities and struggles have often been overshadowed by the Model Minority Myth and the aggregation of several cultures into one monolithic identity. Join us for a deep dive into the disaggregation efforts in Higher Education Institutions, and the efforts to support Southeast Asian communities through individualized means. We will discuss the current movement to disaggregate AAPI data, and what happens after we lift the veil.

Presenters:

- Junn O. Paulino, J.D., Senior Associate, Atkinson, Andelson, Loya, Ruud, and Romo
- Elizabeth J. Rho-Ng, J.D., Partner, Atkinson, Andelson, Loya, Ruud, and Romo
- Jacqueline D. Hang, J.D., Senior Associate, Atkinson, Andelson, Loya, Ruud, and Romo

H6 – JUNIOR BALLROOM 1

DESIGNING TECHNOLOGY TO PROMOTE DIVERSITY, EQUITY, AND INCLUSION WITHIN THE HIGHER EDUCATION LANDSCAPE: A CASE STUDY USING VR CHEMISTRY LABS

Target Audience: Mid-Level Professionals

How will the chemistry lab of the future reduce equity gaps and increase student retention? In this workshop, we will talk about the use of virtual reality in chemistry labs to provide more equity and belongingness for our students. We will cover research focused on this topic and talk about ways you can bring this lens to improve your campus's student equity and inclusion in all aspects of instruction and services.

Presenters:

- Sheree Fu, MLIS, Engineering, Computer Science, and Technology Librarian, California State University Los Angeles
- Shalini Ramachandran, Ph.D., MLIS, Reference & Instruction Librarian for STEM, Loyola Marymount University
- Michael Tanizaki Kurland, Ed.D., Student Success & Advising Strategist, Cal State LA

H7 – JUNIOR BALLROOM 2

FRESNO CITY COLLEGE'S USEAA (UNITED SOUTHEAST ASIAN AMERICAN) ACADEMIC PROGRAM: A CASE STUDY ON AANHPI STUDENT SUCCESS PROGRAMS IN THE CALIFORNIA COMMUNITY COLLEGE SYSTEM.

Target Audience: Mid-Level Professionals

In April 2023, the California Community Colleges Asian American, Native Hawaiian, and Pacific Islander (AANHPI) Student Achievement Program Central Office was established. Since its inception, there have been increased efforts ensuring AANHPI and underserved student success, especially within 50 colleges receiving program funds. This session spotlights the long-term efforts at Fresno City College and its USEAA (United Southeast Asian American) Academic Program. Come join this session to learn more about the 20 years of their work to support Southeast Asian American students, and their vision for the future in light of new opportunities with the AANHPI Student Achievement Program.

Presenters:

- Anthony Amboy, MFA, Director, AANHPI Student Achievement Program, Foundation for California Community Colleges
- Regem Corpuz, MPH-MPP, Program Specialist, AANHPI Student Achievement Program
- Kami Thepphavong, M.A., USEAA Counselor/Coordinator, Fresno City College
- Karen Crocket, M.A., USEAA English Instructor, Fresno City College
- Tchay Her, Ed.D., USEAA Program Counselor, Fresno City College
- Bounthan Sandee, M.S., USEAA Program Counselor, Fresno City College

H8 – JUNIOR BALLROOM 3-4

ASIAN AMERICAN STUDIES NOW: CONTEMPORARY OPPORTUNITIES AND CHALLENGES IN HIGHER EDUCATION

Target Audience: Mid-Level Professionals

On August 17, 2020, California Governor Gavin Newsom signed Assembly Bill 1460 requiring all students enrolled on the 23 California State University campuses to take a 3-unit class in Native American Studies, African American Studies, Asian American Studies or Latina and Latino Studies. The implementation of AB 1460 has led to curricular changes in the Community Colleges and reinvigorated historical and contemporary debates on diversity requirements in the University of California system. Presenters will not only highlight the efforts to pass AB 1460 in the state legislature, but also address strategies for overcoming obstacles in implementing the Ethnic Studies requirement.

Presenters:

- Timothy P. Fong, Ph.D., Professor, Department of Ethnic Studies Director and Principal Investigator, Full Circle Project Co-Principal Investigator, Pathways Fellows Program, California State University, Sacramento
- Jocelyn A. Pacleb, Ph.D., Professor and Department Chair, Ethnic & Women’s Studies, Cal Poly Pomona
- Yvonne Y. Kwan, Ph.D., Associate Professor, Program Coordinator, Asian American Studies, San Jose State University

- Melissa–Ann Nievera–Lozano, Ph.D., Professor, Ethnic Studies; Faculty Coordinator ASPIRE+PLLUS, Evergreen Valley College
- Lily Ann B. Villaraza, Ph.D., Philippine Studies Department Chair, City College of San Francisco
- Erick Aragon, M.A., Counselor/Instructor, De Anza College

H9 – ROOM 208

COLLECTIVE WISDOM, COLLECTIVE HOPE: AN INTERACTIVE WORKSHOP ON MENTORING CIRCLE

Target Audience:Mid–Level Professionals

In this interactive workshop, participants will experience the intentional practices of and learn the healing and uplifting power of shared leadership of the Womxn of Color Mentoring Circle, a grassroots group started by three Asian American women at Bellevue College. The facilitators will share strategies and insights on how to organize, grow, and sustain a mentoring program that is based on a shared-leadership and community-oriented model.

Presenters:

- Nan Ma, Ph.D., Professor of English, Bellevue College
- Angela Leung, M.A., International Student Advisor, Bellevue College
- Chiew Jones, M.A., Director of Career Development and Experiential Learning, Northeastern University

**H11 – CALIFORNIA ROOM
DO I BELONG? - SHIFTING STRUCTURES OF SUPPORT THROUGH RADICAL LOVE FOR AAPI STUDENTS IN MIDDLE COLLEGE/DUAL ENROLLMENT**

Target Audience:Mid–Level Professionals

Join our panel discussion to learn more about how San Jose City College and Milpitas Unified High School District have collaborated to create access to higher education opportunities for local high school students. Engage in conversations about how shared cultural experiences, representation, and allyship have influenced our AAPI students’ success.

Presenters:

- Sandy Ho, M.S., Counselor & Instructor, San Jose City College
- Mandy Lau Manluco, Masters in Education Counseling, Educator and Curriculum Development Specialist/ Milpitas Middle College High School

H10 – ROOM 210/211

PAKIKIPAGKAPWA-TAO: DISILLUSIONMENT, TOUCHSTONES, AND RADICAL HOPE IN HIGHER ED

Target Audience: Mid–Level Professionals

This interactive workshop by and for Filipinx American higher ed professionals offers the opportunity to explore “pakikipagkapwa-tao” as a lens to understand our struggles with moments of disillusionment we’ve experienced in our careers. We will reconnect to our touchstones in our workspaces and lives in a return to a radical hope that may reactivate our belief in change.

Presenters:

POSTER SESSION DESCRIPTIONS

**THURSDAY, APRIL 4, 2024
(MORNING)**

P1 – GRAND BALLROOM FOYER ACADEMIA OR INDUSTRY: ASIAN PACIFIC ISLANDER DOCTORAL STUDENTS’ JOURNEY NAVIGATING DIVERSE CAREER PATHWAY

Studies have shown that the lack of diversity in the professoriate may potentially impact the future pipeline of Asian Pacific Islander (API) doctoral students. This mixed-methods study will examine factors driving API doctoral students’ career choices and whether there were differences between API doctoral students’ career aspirations in pushing for academic jobs or industry jobs.

Presenters:

- Marlena Vi Wolfgramm, Ph.D., Postdoctoral Researcher, Council of Graduate Schools
- Enyu Zhou

P2 – GRAND BALLROOM FOYER FILIPINO ENOUGH: RACISM & FILIPINO AMERICAN STUDENT LEADERSHIP

This study examines the phenomena of racism among Filipino American student leaders. The theoretical frameworks Critical Race Theory and Asian Critical Theory offered lenses that assisted in the formulation of the research questions, analysis of the literature review, and analysis of the findings. This study concludes that Filipino American student leaders actively combat racialization within themselves and from others, persevere against structures that perpetuate racialization when they’re grounded in themselves, their peers, and their community, and experience discrimination across multiple leadership roles, among communities of color, and within the Asian American community.

Presenters:

- Janrey Javier, M.A., Student Engagement Manager, University of California, Berkeley

P3 – GRAND BALLROOM FOYER RADICAL HOPE IN STEM: NAVIGATING IDENTITY AND CHOICE AMONG FILIPINX AMERICAN STUDENTS

Explore the complex interplay of historical trauma, colonization, and racial discrimination in shaping the career choices of Filipinx American STEM students at a California R1 University. This insightful presentation employs Critical Race Theory and decolonial intersectionality to analyze how microaggressions, colonial legacies, and societal racism impact these students’ sense of belonging and decision-making in STEM fields. Attendees will gain an in-depth understanding of the unique challenges faced by Filipinx Americans in higher education and learn strategies to foster more inclusive and supportive academic environments. Key takeaways include practical implications for enhancing Filipina/x/o American students’ educational and career development in STEM.

Presenters:

- Clarielisa Ocampo, M.Ed., Doctoral Student and Graduate Research with AAPIData, University of California, Riverside

**THURSDAY, APRIL 4, 2024
(AFTERNOON)**

P4 – GRAND BALLROOM FOYER A LABOR OF LOVE: ESTABLISHING THE FIRST PEOPLE & CULTURE-SPONSORED FILIPINX FACULTY AND STAFF ASSOCIATION AT THE UNIVERSITY OF CALIFORNIA, BERKELEY

This poster presented by the inaugural organizing committee members will share the history, galvanizing moments, and founding of the first-ever People & Culture sponsored Filipinx Faculty & Staff Association on the UC Berkeley campus. This poster presentation will offer insights, challenges, and lessons to fostering relationships between students, staff, faculty, and alumni, navigating campus bureaucracy, and building ally-ship with other marginalized groups on campus.

Presenters:

- Emily Enriquez, M.A., Advisor of Student Organizations, University of California, Berkeley
- Arman Liwanag, M.Ed., Senior College Adviser, College of Letters & Science, UC Berkeley
- Catherine McChrystal, M.A., Instructional Designer, School of Optometry, UC Berkeley

- Melissa Urbano, Senior Administrative Specialist, Annual Programs, University Development and Alumni Relations, UC Berkeley
- Mickael Candelaria, M.Ed., Director, Student Governance & Program Advising, UC Berkeley

**P5 – GRAND BALLROOM FOYER
CLINICIANS’ EXPERIENCES IMPLEMENTING
MULTIDIMENSIONAL FAMILY THERAPY
WITH BILINGUAL (SPANISH/ENGLISH) AND
TRILINGUAL (SPANISH/ENGLISH/MIXTEC)
FAMILIES**

Multidimensional Family Therapy (MDFT) aids adolescents battling substance abuse, emphasizing enhanced family communication. Existing literature targets English speakers, and assessing MDFT’s efficacy in multilingual households is imperative. This study, involving interviews with therapists, uncovers key themes like cultural competence, family dynamics, and language in therapy, urging further investigation in diverse families.

Presenters:

- Jacqueline Lopez, McNair Scholar, HSF Scholar, EOP Chicana/Latina Cultural Resource Center PM, Diversity in Healthcare Scholar, University of California, Santa Barbara
- Jill Sharkey, Ph.D., Associate Dean & Professor, University of California, Santa Barbara
- Angela Pollard, M.A., University of California, Santa Barbara

**P6 – GRAND BALLROOM FOYER
MODERN FILIPINOS IN THE MENTAL HEALTH
FIELD**

As Filipinos, it is significant for us to create dialogue around mental health, especially for the generation that was born here, who may feel disconnected from our roots. Because Filipinos have roots that stem from colonization and different cultural influences, our stories tend to be even more forgotten. By building representation for Filipinos, we are creating a space that makes Filipinos feel safer. We create a space for Filipinos to engage and believe that this field is just as important as any other medical field we are expected to be a part of.

Presenters:

- Neena Ramirez, Graduate Assistant, CSU Northridge
- Julianne De Guzman, Graduate Assistant, CSU Northridge

**FRIDAY, APRIL 5, 2024
(MORNING)**

**P7 – GRAND BALLROOM FOYER
BECOMING CHINESE: RE-LEARNING
CULTURAL ROOTS AS A FIRST GENERATION
CHINESE AMERICAN**

This poster will present a personal experiment in a community college student’s attempt at becoming more culturally Chinese as a first generation Asian American who was not taught the culture. The project focuses on the Cultural Iceberg Model coined by Edward T. Hall and how aspects of the Iceberg can be implemented into daily life, showing that is never too late to keep in touch with one’s family’s history and to take pride of the intersectionality as a First Generation Asian American.

Presenters:

- Emilee Chu, Student Peer Mentor, Cosumnes River College, Asian Pacific Islander Desi American Holistic Achievement With Knowledge and Service (APIDA HAWKS)

**P8 – GRAND BALLROOM FOYER
FILIPINO/A/X AMERICAN ETHNIC IDENTITY
AND SENSE OF BELONGING IN COLLEGE**

Filipino/a/x Americans are coined as the ‘invisible Asian Americans’ by Cordova (1983). Researchers argue that vital to understanding the experiences of current Filipino/a/x American college students is analyzing the population in the context of colonialism, its legacies, and its contemporary implications (David et al., 2017). Thus, this literature reviews the experiences of Filipino/a/x Americans in higher education within the context of its colonial history and legacy. Understanding the context and impact of history has benefits and implications in higher education attempting to implement more culturally responsive resources and approaches into their institution.

Presenters:

- Myra Dayrit, Undergraduate Student Researcher, Chapman University

**P9 – GRAND BALLROOM FOYER
NURTURING SOUTHEAST AA LEADERS IN
HIGHER EDUCATION**

Discover the keys to success for Southeast Asian American (AA) leaders in California community colleges

in this insightful session. Uncover the early psychosocial and environmental factors that propel AA leaders forward, breaking down barriers like the model minority myth. Delve into themes of mentorship, community, and familial motivation, offering practical takeaways for future leaders. Join us for a qualitative inquiry that not only identifies alterable factors supporting the Southeast AA leadership pipeline but also aims to inform interventions and policies for increased representation. Don't miss this opportunity to contribute to a more inclusive future in higher education administration.

Presenters:

- Kevin Nguyen, M.S., PhD Doctoral Student, Claremont Graduate University
-

P10 – GRAND BALLROOM FOYER WHAT IS AAPI? NOVA'S PHOTOVOICE PROJECT

This photo project allows peer mentors and mentees in NOVA's AAPI Connect program to answer the questions "what does being AAPI mean to me?" and "what is it like being AAPI at NOVA?" Capturing their own opinions and perceptions through photography assignments, and thus centering their own voices, students will collectively decide on common themes, issues, or concerns they face in the community college space. This data will be used to inform administrators, faculty, and staff about the AAPI population at NOVA, and hopefully influence policy change and assistance to our community.

Presenters:

- Mei Lan Frame, Ph.D., AANAPISI Grant Coordinator, AAPI Intercultural Center Director, Northern Virginia Community College
- Heather Moser, BA, AAPI Intercultural Center Assistant

2024 APAHE CONFERENCE PLANNING COMMITTEE

We are grateful to the following individuals for keeping radical hope as the focus during the last nine months of planning. Collectively, we believed in the possibility of manifesting radical hope by leading with love, courage, and action to bring you this year's APAHE Conference!

CONFERENCE COMMITTEE TRI-CHAIRS

Dr. Ailene Cua Crakes

Dean of Student Development
San Diego Mesa College

Takeo Kubo

Director of Financial Aid &
Scholarship Programs
San José City College

Dr. Naomi Querubin Abesamis

Interim Dean of Student
Support Services
Fullerton College

THE TEAM

1. Ibrahim "Abe" Ali, APAHE Board Past President; Vice Chancellor of Human Resources for Kern Community College District
2. Erick Aragon, Counselor/Instructor, Outreach & Relations with Schools, De Anza College
3. Dr. Aida Cuenza-Uvas, Director of Arise Program, Mt. San Antonio College
4. Maniphone "Moni" Dickerson, Vice President of Strategic Partnerships & Workforce Innovations, San José City College
5. Romeo Garcia, Director of Student Equity and Success, Cypress College
6. Brian Goo, Director of Research, Planning and Institutional Effectiveness, Chabot College
7. Tomoko Ha, Founder and Principal Consultant, TKO Consulting
8. Dr. Lori Ideta, APAHE Board of Directors; Vice Provost for Student Success (Retired), University of Hawai'i Manoa
9. Janrey Javier, Student Engagement Manager, University of California, Berkeley
10. Dr. Amrik Johal, Assistant Dean of Students, Irvine Valley College
11. Johnny Lai, Marketing and Communication Specialist, California State Polytechnic University, Pomona
12. Albin Lee, Retention Specialist, Promise Scholars Program, Skyline College
13. Kelly Li, Program Services Coordinator of Global Learning Programs & Services, Skyline College
14. Paulette Lino, Director of Admissions and Records, Chabot College
15. Marwin Luminarias, Coordinator of Veterans Resource Center, Fullerton College
16. Jessica Mow, APIDA Success Coach, Cosumnes River College
17. Roger Moy, Business & Financial Services Supervisor, University of California, Davis
18. Suman Mudunuri, Assistant Professor of Computer & Office Studies, Long Beach City College
19. Dr. Bobby Nakamoto, Dean of Social Sciences, Chabot College
20. Anu V. Nanjappa, Manager of Graduate Admissions & Alumni Engagement, Chapman University
21. Dr. Patricia Neilson, APAHE Board of Directors
22. Dr. Mike Nguyen, APAHE Board of Directors; Assistant Professor of Education, New York University
23. Steven Nguyen, Manager of Career and Transfer Services, Diablo Valley College
24. Dr. Newin Orante, Acting President, Skyline College
25. Arnold Paguio, APAHE Board of Directors; Director of Student Life and AANAPISI Project Director, Chabot College
26. Dr. Tracy Pascua Dea, Academic Climate Program Director, University of California, Berkeley
27. Dr. Eric Ramones, APAHE Board of Directors; Vice Chancellor of Human Resources, West Valley-Mission Community College District
28. Meng So, Director of Access & Opportunity Programs, University of California Berkeley
29. Grace Toy, Sr. Vice President of Administration & CFO, Leadership Education for Asian Pacifics (LEAP)
30. Dr. Rowena Tomaneng, President of APAHE Board; President, San José City College
31. Jacqueline Toy, Associate Director of Weber Honors College, San Diego State University
32. Phillip Tran, Business Instructor, College of San Mateo
33. Eledy Vargas Gonzalez, Operations and Programs Specialist, Leadership Education for Asian Pacifics (LEAP)
34. Rikka Venturanza, Doctoral Candidate, University of California, Los Angeles
35. Marianne Wolfe, Director of ELEVATE AAPI and Counselor, Irvine Valley College
36. Yvonne Wu Craig, Treasurer of APAHE Board; Executive Director of Institutional Advancement, Chabot College
37. Mark Yamamoto, Counselor and Transfer Coordinator, Diablo Valley College
38. Brandon Yanari, Director of Student Outreach & Recruitment, Evergreen Valley College

SPEAKERS

Michael V. Drake, M.D.

In August 2020, Michael V. Drake, M.D., became the 21st president of the University of California's system of 10 campuses, six academic health centers, three affiliated national laboratories, more than 290,000 students and 230,000 faculty and staff. President Drake also holds faculty appointments at the UCSF School of Medicine as a professor of ophthalmology and at the UC Riverside School of Medicine as a professor of medicine. President Drake served as the 15th president of The Ohio State University (OSU) from 2014 through June 2020. Prior to his six years at OSU, his entire academic career had been at the University of California, including nine years as chancellor of UC Irvine (2005–2014) and five years as UC systemwide vice president for health affairs (2000–2005). President Drake received his A.B. from Stanford University and his M.D. and residency training from UCSF.



Rose Ann Rico Eborda Gutierrez, Ph.D.

Rose Ann Rico Eborda Gutierrez obtained her Ph.D. at University of California, Los Angeles in Social Sciences and Comparative Education with a specialization in Race and Ethnic Studies. Her research is informed by a Pinay epistemology and positionality as a 1.5-generation immigrant, first-generation college student, and the only daughter of working-class Pilipino immigrants. Her critical analytical lens as a race scholar in education undergirds her resolve to improve the conditions and opportunities of historically oppressed communities across the lifespan through educational research and practice. Her broader research agenda examines the relationship between knowledge, race, and social transformation in higher education contexts and is anchored by critical theories and critical qualitative methodologies.

She focuses on low-income, immigrant, immigrant-origin, undocumented, and first-generation Students of Color, and more specifically, Asian American and Pacific Islander students. She has published in *Educational Researcher*, *Journal of Diversity in Higher Education*, and *Community College Review*.

Vincent Pan



Vincent Pan is the Co-Executive Director for Chinese for Affirmative Action (CAA), a community-based social justice organization in San Francisco. CAA advocates for systemic change that protects immigrant rights, promotes language diversity, and advances racial justice. At CAA, Vincent is helping to lead Asian Americans for Civil Rights and Equality, a new network-based approach for movement building.

Prior to CAA, Vincent worked with the Clinton Foundation on treatment programs for children living with HIV/AIDS in China. Before that he co-founded and led Heads Up, which ran after-school and summer programs by enlisting college students as AmeriCorps members.

Vincent's community involvement includes former and current service on the board of the Center for Asian American Media, the steering committee of API Equality – Northern California, the board of CompassPoint Nonprofit Services, and as a member of the San Francisco Police Commission.

Vincent holds a degree in Economics from Harvard University, and has been a Fellow with the Center for Social Innovation at Stanford University, the Echoing Green Foundation, and the Stride Rite Foundation.

Vikash Reddy, Ph.D.

Vikash Reddy has over 15 years of experience in higher education research, with particular expertise in outcomes-based funding policies and developmental education reforms. Prior to joining the Campaign, Vikash was a Policy Analyst at the California Policy Lab at UC Berkeley, where he worked with California government agencies including the California Community College Chancellor's Office and the California Student Aid Commission to analyze administrative data and evaluate pilot programs. Vikash previously worked at the Community College Research Center and the Center for the Analysis of Postsecondary Readiness at Teachers College, Columbia University, where he co-authored books and articles on performance funding in higher education, researched reforms in developmental education, and helped to create and evaluate multiple measures placement systems at the State University of New York.



KEYNOTE SPEAKER & PACESETTER AWARD



Wenda Fong

Wenda Fong began her 40-plus-year career in television as the producer and host of her live talk show series in Los Angeles. She is also the producer and director of music and variety specials, awards shows, reality specials, sitcoms, talk shows, documentaries, PSAs, and live events. She holds the dual distinction of being the first person of color and woman to have produced the Emmy Awards. She has launched productions across the United States and worldwide, including China, Canada, Europe, and Africa.

Fong earned her Bachelor of Arts in Asian American Studies from the University of Southern California.

COMMUNITY CHAMPION AWARD

Robert A. Underwood, Ed.D.

The Honorable Robert Underwood served as the 10th President of the University of Guam. He is both a President Emeritus and Professor Emeritus of the University of Guam and is a distinguished educator with many publications and major presentations to his credit. He is the longest-serving President of UOG.

He served five terms as Guam's Congressional Delegate (1993–2003) and was a senior member of both the Armed Services and Resources Committees in the U.S. House of Representatives. He authored major pieces of legislation for Guam and the insular areas, served as Chair of the Congressional Asian Pacific American Caucus and was ranking member of several panels and subcommittees. In these capacities, he was a national leader in strengthening security relationships in the Asia Pacific region, fought discrimination against immigrants and minorities and enhanced educational opportunities for Asian Pacific Islander Americans.



KEYNOTE SPEAKER & APAHE CEO AWARDEE

Frank H. Wu, JD

Frank H. Wu is the eleventh President of Queens College. He served as Chancellor and Dean and then William L. Prosser Distinguished Professor at the institution now known as UC College of the Law, San Francisco. He was a faculty member at Howard University, for a decade and also served as Dean of Wayne State University Law School in his hometown of Detroit.

Frank is the author of *Yellow: Race in America Beyond Black and White*, and co-author of *Race, Rights and Reparation: Law and the Japanese American Internment*.



APAHE CEO AWARDEES



Galvin Deleon Guerrero, Ed.D.

Galvin Deleon Guerrero is the president of Northern Marianas College. With almost 30 years of teaching and leadership experience in K-12 and higher education, he holds a Bachelor's of Arts degree in English literature, a Masters of Arts degree in School Administration, and an Education Doctorate in Organizational Change Leadership. He has also taught English and social studies at the secondary and post-secondary levels; has coached speech, debate, and mock trial; and has produced over 50 stage and film productions as a dramatist and filmmaker.



Julie Chen, Ph.D.

Julie Chen was named chancellor of UMass Lowell after leading the university's growing research franchise into a nearly \$95 million annual operation. Unanimously appointed by the UMass trustees in May 2022, Chen assumed her role as UMass Lowell's fourth chancellor — and just the second woman to lead the university of more than 18,000 students — on July 1, 2022.

Chen previously served as vice chancellor for research and economic development, a role that included managing industry partnerships, technology transfer, startups and innovation, core research facilities and economic development programs.

As UMass Lowell's chief research officer, Chen facilitated numerous innovative models that brought together industry, government and academia.



Sonya Christian, Ph.D.

Sonya Christian is currently the Chancellor of the California Community Colleges, the largest system of higher education in the nation, serving over 1.9 million students across 116 colleges. Dr. Christina is a fierce advocate for the life-changing ability of community colleges to reach underserved populations and educate the future workforce. She is committed to advancing work through distributed leadership and collaborative communities of learning and to promoting the value of equity in student learning, access, success, and economic mobility.

LAND ACKNOWLEDGEMENT



Julie Dominguez

Member & Tribal Ambassador of the Muwekma Ohlone Tribe of the San Francisco Bay Area

Julie is a member and tribal ambassador of the Muwekma Ohlone Tribe of the San Francisco Bay Area and is an advocate for the protection of land and waterways on her ancestral homelands. Following her mother's leadership on food justice, she is an advocate for underrepresented communities, including her tribe. She lives in San Jose with her two sons, is a California Native dancer, and is a lover of art, music, and culture. Her family is supporting the revitalization of dance, culture, and tradition with the Muwekma Ohlone Tribe of the San Francisco Bay Area. Julie also serves on the Advisory Board for Green Foothills. Julie will now be reading a land acknowledgment following a blessing in her native language.

Asian Pacific Americans in Higher Education (APAHE) Muwekma Ohlone Tribe Land Acknowledgement

The Asian Pacific Americans in Higher Education National Conference recognizes that the present-day Muwekma Ohlone Tribe of the San Francisco Bay Area, is the aboriginal tribe of the greater City of Oakland region, and is comprised of all of the known surviving American Indian lineages aboriginal to the San Francisco Bay region who trace their ancestry through the Missions San Francisco (1776), Santa Clara (1777), and San José (1797), during the expansion of the Hispano-European empire into Alta California; and who are the successors and living members of the sovereign, historic, previously Federally Recognized Verona Band of Alameda County. Furthermore, the Asian Pacific Americans in Higher Education National Conference also recognizes that the City of Oakland and surrounding regions is established within the greater intermarried Huchiun, Huchiun-Aguasto, Carquin, Jalquin, Saclan, Ancestral Muwekma Ohlone/Bay Miwok speaking tribal ethnohistoric territories, which based upon the unratified federal treaties of 1851-1852, includes the unceded ancestral lands of the Muwekma Ohlone Tribe of the San Francisco Bay Area. It is our honor to recognize the over 10,000 year history and heritage of the Muwekma Ohlone Tribe of the San Francisco Bay Region.



Asian Pacific Americans in Higher Education National Conference Muwekma Ohlone Land Acknowledgement (April 2024)



LEAP ADVANCE 2024 APPLICATION

FULL PROGRAM DATES

7/10/24 - 7/13/24

PROGRAM COST

\$2,250

4-DAY INTENSIVE LEADERSHIP
TRAINING INCLUDING MEALS.

LODGING AND TRAVEL COSTS
ARE SEPARATE.



PROGRAM INFORMATION



PROGRAM

Noted API speakers, 1:1 mentoring,
culturally-based leadership training,
interview practice



HIGHER EDUCATION FOCUS

Individuals with leadership potential
who have been serving in staff, faculty
or administrative roles within higher
education for several years



PARTNERSHIP

Program is held in partnership with
Asian Pacific Americans in Higher
Education (APAHE)



LOCATION

Kellogg West Conference Center and Hotel
in Pomona, CA

APPLY TODAY



FOR MORE INFORMATION, EMAIL

CHINGCHA VANG
Program Manager
cvang@leap.org

or

Eledy Vargas
Operations and Program
Specialist
evargas@leap.org

[LEAP.ORG/ADVANCE](https://leap.org/advance)



COMMITTED TO STUDENT SUCCESS

aalrr Atkinson, Andelson
Loya, Ruud & Romo

Strength through *Diversity.*

California's Leading Education Law Firm

Cerritos | Fresno | Irvine | Marin | Pasadena | Riverside | Sacramento | San Diego

www.aalrr.com

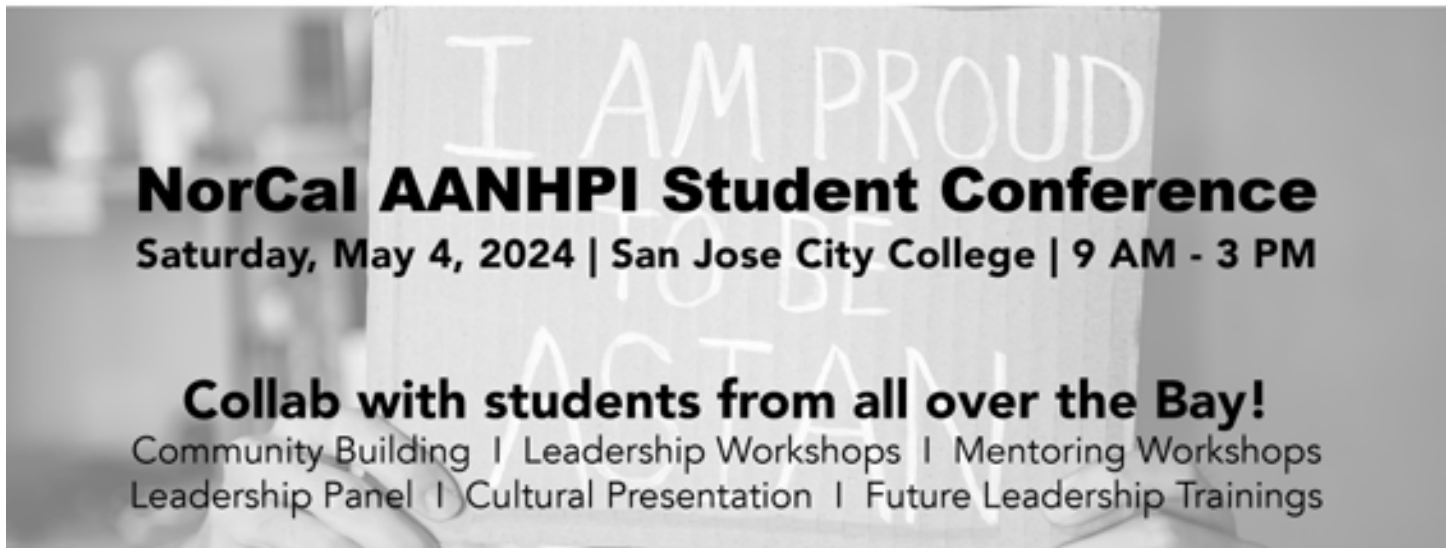


Asian American & Native Hawaiian Pacific Islander Students

Slay 2024

CALIFORNIA STUDENT LEADERSHIP ACADEMY

Learn to Lead. Empower Equity. Be Mentored.



NorCal AANHPI Student Conference

Saturday, May 4, 2024 | San Jose City College | 9 AM - 3 PM

Collab with students from all over the Bay!

Community Building | Leadership Workshops | Mentoring Workshops
Leadership Panel | Cultural Presentation | Future Leadership Trainings

Paid for by your college. Space is limited. Save the Date.



To register contact KimberlyLam@apali.org

Celebrating 20 Years

APIA Scholars is the nation's leading non-profit organization devoted to reducing financial barriers and increasing access to higher education through scholarships, research and policy, and student programs for Asian American, Native Hawaiian, and Pacific Islander (AANHPI) students.

Scan to Learn More About AANAPISIs



Emiso "Keana" Musrasrik
APIA Scholar



#1 IN THE NATION
**FOR THE UPWARD MOBILITY
OF OUR STUDENTS**





CHABOT LAS POSITAS

COMMUNITY COLLEGE DISTRICT

Proud Sponsor of the 2024 APAHE Conference!

Founded in 1961, CLPCCD serves 29,000 students annually, in the San Francisco East Bay Area, particularly southern Alameda County, through its two colleges: Chabot College in Hayward and Las Positas College in Livermore. CLPCCD is governed by a seven member board of trustees which is responsible for all policy decisions. Board members are elected from trustee areas by the registered voters of nine communities: Castro Valley, Dublin, Hayward, Livermore, Pleasanton, San Leandro, San Lorenzo, Sunol, and Union City.



Visit <https://www.clpccd.org/>

**MANY
PATHS...**



**ALL
LEADING
TO THIS
MOMENT**



The Foundation for California Community Colleges proudly supports the 2024 APAHE Conference.

Fostering Equity in Higher Ed
Fostering Equity in Higher Ed
for all Californians

**Asian American
Native Hawaiian & Pacific Islander
Student Achievement Program**

Supporting colleges with culturally responsive services for low-income, underserved, and first-generation AANHPI student success.

PHOTO:
SAN DIEGO MIRAMAR COLLEGE



FOUNDATION *for* CALIFORNIA
COMMUNITY COLLEGES

foundationccc.org



LEARN MORE



INSPIRING AND EDUCATING

FUTURE LEADERS, CREATORS, & PROBLEM SOLVERS THROUGH INNOVATIVE PROGRAMS

Kern CCD supports APAHE!



Cutting Edge Career Training



Guided Pathways Towards Degrees



In-Demand Workforce Development



Providing Adult Education for Brighter Futures

**BAKERSFIELD
COLLEGE**


bakersfieldcollege.edu
(661) 395-4011



www.cerrocoso.edu
(760) 384-6100

**PORTERVILLE
COLLEGE**

www.portervillecollege.edu
(559) 791-2200

 (661) 336-5100

 web@kccd.edu

 www.kccd.edu

 2100 Chester Ave.,
Bakersfield, CA 93301



ASIAN PASIFIKA DESI AMERICAN

LOS ANGELES COMMUNITY COLLEGE DISTRICT

YOU BELONG HERE



Scan QR code
to learn about
our 9 colleges



**ENROLL
NOW!**



**LONG BEACH
CITY COLLEGE**



LONG BEACH CITY COLLEGE is proud to be a sponsor of the **2024 APAHE CONFERENCE**

As an Asian American and Native American Pacific Islander Serving Institution, LBCC is committed to serving our Asian Pacific Islander Desi students, faculty and classified staff through academics, support services and programs. We strongly support organizations like APAHE, that create safe and supportive spaces for our Asian Pacific Islander Desi colleagues and students to gather as a community, share best practices and find inspiration to continue their important work.



www.LBCC.edu





NOCCCD is a proud sponsor of the 2024 APAHE National Conference!

The North Orange County Community College District (NOCCCD) is dedicated to fulfilling its mission for the success of its Asian and Pacific American students; supporting the hiring, retention, and advancement of Asian and Pacific American faculty and staff; and developing an interculturally proficient community that understands issues affecting Asian Pacific Americans.

We are proud that both Cypress College and Fullerton College are designated as Asian American and Native American Pacific Islander-Serving Institutions (AANAPISI) and we congratulate Fullerton College for being awarded the AANAPISI grant in 2023! We thank the NOCCCD Asian Pacific Islander and Desi American (APIDA) Faculty & Staff Association for their continued leadership.



ASIAN PACIFIC ISLANDER FACULTY AND STAFF ASSOCIATION
NORTH ORANGE COUNTY COMMUNITY COLLEGE DISTRICT



NORTH ORANGE COUNTY
COMMUNITY COLLEGE DISTRICT

Rancho Santiago Community College District is a proud sponsor of the
2024 APAHE Conference



SANTA ANA
COLLEGE



Santiago
Canyon
College

ELEVATING STUDENT SUCCESS.



ENROLL TODAY!



[SAC.edu](https://www.sac.edu)



[SCCOLLEGE.edu](https://www.sccollege.edu)



[RSCCD.edu](https://www.rscsd.edu)



Join Santa Rosa Junior College's Community and Thrive in Beautiful Sonoma County!



Victor Tam, Dean, Science, Technology, Engineering & Mathematics



*From left: Amy Roscielle Flores, Faculty, College Skills & Adult Ed
Monica Ohkubo, Faculty, Kinesiology, Athletics, & Dance
Jerry Thao, Counselor, Counseling & EOPS*

Located in the magnificent Northern California Wine Country, we offer excellent opportunities for equity-minded employees who are committed to providing educational opportunities for our diverse student population and contributing towards cultivating an accessible, open, barrier-free, sustainable environment for students, employees, and the community. Nearly 2,800 individuals work full or part-time at SRJC, making it one of the largest employers in Sonoma County. In 2024, we plan to hire 10 Contract Faculty.

Santa Rosa Junior College is continuously seeking qualified candidates for employment.

Please go to www.schooljobs.com/careers/santarosajc to apply for openings.

The Sonoma County Junior College District does not discriminate on the basis of race, religious creed, color, national origin, ancestry, ethnic group identification, physical disability, mental disability, medical condition, genetic condition, marital status, sex, gender, gender identity, gender expression, genetic information or sexual orientation in any of its policies, procedures or practices; nor does the District discriminate against any employees or applicants for employment on the basis of their age. This non-discrimination policy covers admission, access and treatment in District programs and activities, including but not limited to academic admissions, financial aid, educational services and athletics, and application for District employment.



As an AANAPISI campus with over 40% of our students identifying as Asian and Pacific Islander, San José State University is proud to support the 2024 APAHE National Conference. With the establishment of the Center for Asian Pacific Islander Student Empowerment in 2022 and the launch of the Asian American Studies BA major in 2024, SJSU is, and will continue to be, a beacon of social justice and civic engagement in and beyond the San Francisco Bay Area.



SJSU congratulates
Wenda Fong,
CSU Board of Trustees Chair,
for receiving the
APAHE Pacesetter Award!

**SONOMA
STATE
UNIVERSITY**



**SONOMA
STATE UNIVERSITY
WELCOMES YOU TO THE
2024 APAHE CONFERENCE**

Get Into the Sonoma State of Mind



Colleges that Care

The South Orange County Community College District is home to an incredibly diverse population of students. We are proud that Irvine Valley College is an Asian American and Native American Pacific Islander-Serving Institution (AANAPISI) and that Saddleback College is a Hispanic Serving Institution (HSI). Collectively – through programs, resources, and support – we are caring for students through education and training to help them grow, achieve, and succeed.

**SADDLEBACK
COLLEGE**

www.saddleback.edu



**IRVINE VALLEY
COLLEGE**

www.ivc.edu

SOUTH ORANGE COUNTY COMMUNITY COLLEGE DISTRICT

Chancellor Julianna M. Asperin Barnes, EdD

**SOCCCD Trustees: Ryan Dack, Carolyn Inmon, Barbara J. Jay, DDS,
Timothy Jemal, Marcia Milchiker, T.J. Prendergast III, Terri Rydell, EdD**



The Asian American Foundation (TAAF) is proud to continue its support of Asian Pacific Americans in Higher Education (APAHE).

Founded in 2021, TAAF serves the Asian American and Pacific Islander community in their pursuit of belonging and prosperity that is free from discrimination, slander, and violence.

TAAF aims to establish an infrastructure to teach inclusive AAPI history in K-12 classrooms nationwide, expand curriculum and teacher trainings, and advance AA & PI studies in higher education.

UC Office of the President Sponsor's APAHE

The Asian Pacific Islander Staff Association at UCOP wants to specifically thank Sponsorship from the UCFinance Division and Graduate Undergraduate and Equity Affairs

FIAT LUX



At Mt. San Antonio College in Southern California, we value diversity in all aspects of the human condition. We pursue equity by reevaluating how we empower each person to achieve their success. Faculty and staff that understands how cultural diversity in the academic environment promotes academic excellence, fosters cultural, racial, and human understanding, and provides positive role models for the campus community.

To join the team, apply at: <https://hrjobs.mtsac.edu/>



MAKE A DIFFERENCE AT



Initial faculty salaries range from \$81,395 - \$121,4782 annually



SJECCD COLLEGES RANK

TOP 5

**IN THE NATION
FOR FACULTY DIVERSITY
AMONG ALL 2-YEAR PUBLIC INSTITUTIONS**

SJCC #3 | EVC #5

2023-24 Chronicle of Higher Education Almanac

San José – Evergreen Community College District is dedicated to enhancing the educational experiences of all students. We understand that cultural diversity in the academic environment promotes academic excellence, fosters understanding, provides positive role models for all students, and creates an atmosphere where equity in student success is the definition of institutional excellence.



SAN JOSÉ · EVERGREEN
Community College District



**EVERGREEN
VALLEY COLLEGE**



SDSU | San Diego State University

**IS A PROUD SPONSOR
OF THE 2024 ASIAN
PACIFIC AMERICANS IN
HIGHER EDUCATION
(APAHE) CONFERENCE!**



SDSU

San Diego State University

SDSU.EDU

@SANDIEGOSTATEUNIVERSITY

5500 CAMPANILE DRIVE
SAN DIEGO, CA 92182
619-594-5200

Allan Hancock College

Allan Hancock College fosters an educational culture that values equity and diversity and engages students in an inclusive learning environment. We offer pathways leading to skill building, certificates, associate degrees, and transfer to four-year universities.

We believe that our students' success is our success, and we are here to inspire them to achieve their academic, career, and personal goals.

Visit us at hancockcollege.edu.



Cal Poly is proud to sponsor the

2024 APAHE CONFERENCE





DO & DARE



California State
University Chico

PROUD SILVER CONFERENCE SPONSOR



TWO-YEARS
FREE
TUITION
FOR FIRST-TIME
COLLEGE STUDENTS

START WITH



citruscollege.edu/connect



Join Our Vibrant Campus Community!

Be a part of a passionate and inclusive team dedicated to student success.

canadacollege.edu | jobs.smccd.edu



California Community Colleges Registry



The CCC Registry is proud to be a Silver Sponsor of the 2024 APAHE Conference

For faculty, administrative management, and staff jobs at a California community college, the CCC Registry has got you covered!



Visit <https://www.ccregistry.org/>



CSUDH proudly congratulates the CSU Board of Trustees Chair, **Wenda Fong**, recipient of the 2024 Asian Pacific Americans in Higher Education Conference Pacesetter Award!

Together, we are building a stronger, more vibrant community.

CSUDH.edu



CAL STATE LONG BEACH

proudly supports Asian Pacific Americans in Higher Education to educate and empower our future leaders.

CALIFORNIA STATE UNIVERSITY
LONG BEACH

csulb.edu

CSUN.EDU

A Brighter and More Equitable Future

CSUN®



ELEVATE AAPI

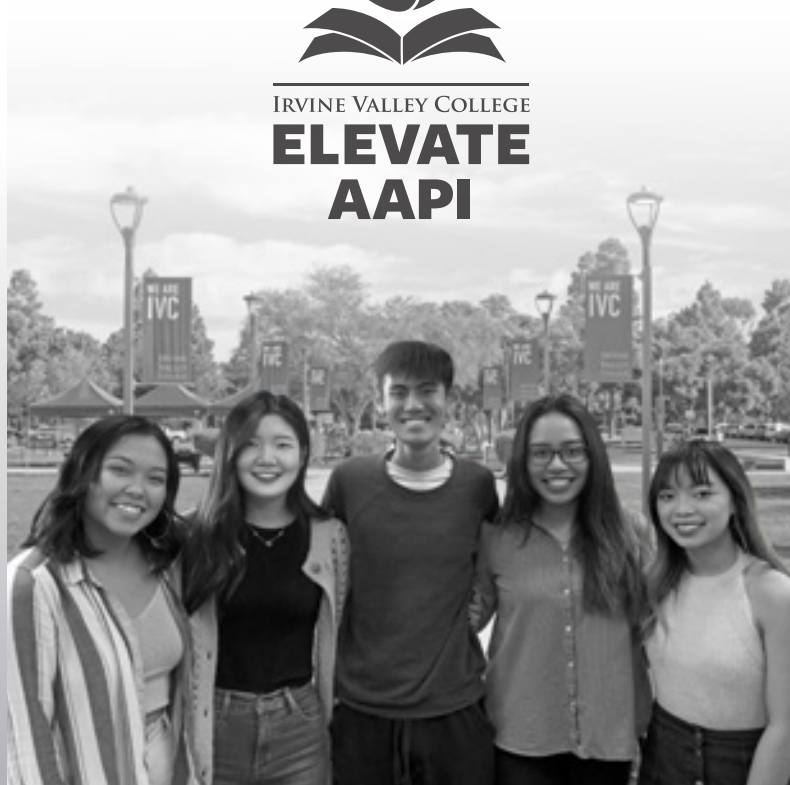
Equitable Learning Experience Valuing
Achievement, Transfer and Empowering Asian
Americans and Pacific Islanders

Dedicated to providing targeted
initiatives and expanded resources
to empower students to achieve
academic success.

ivc.edu/elevate



IRVINE VALLEY COLLEGE
**ELEVATE
AAPI**



Contra Costa
Community
College District

pathways to success



Join Us Today!

At 4CD, we value and respect our diverse community of students and employees. We are committed to hiring and developing a diverse staff that understands that cultural diversity in the academic environment promotes academic excellence; fosters cultural, racial, and human understanding; provides positive role models for students; and creates an inclusive and supportive educational work environment. We support and honor all the work of the APAHE. 4CD encourages you to consider joining our team!



TO LEARN MORE VISIT WWW.4CD.EDU

WE ARE HIRING



JOB
OPPORTUNITIES



Scan QR Codes
to APPLY



CAREER &
TECHNICAL
EDUCATION (CTE)

GET STARTED ON YOUR NEW CAREER TODAY!

Contact Human resources 530-938-5317 or apply at:
<https://www.schooljobs.com/careers/siskiyous>



Piper Sandler is committed to California community colleges

Piper Sandler is a leading financial and underwriting firm serving the needs of California educational agencies.

We provide tailored financing solutions by structuring and underwriting:

- General Obligation Bond Elections
- Bridge Financings
- Lease Revenue Bonds
- Debt Refinancing/Restructuring
- Tax and Revenue Anticipation Notes

For more information, please contact:

Ivory Li
 Managing Director
 +1 415 616-1614
 ivory.li@psc.com

Christen Gair
 Managing Director
 +1 310 297-6018
 christen.gair@psc.com



Piper Sandler & Co.
 50 California Street, Suite 3100 | San Francisco, CA 94111
 2321 Rosecrans Ave., Ste. 3200 | El Segundo, CA 90245

pipersandler.com/CApublicfinance

Since 1895. Member SIPC and NYSE. © 2024 Piper Sandler & Co. 3/24 CM-24-0465

PIPER | SANDLER

Realize the power of partnership.



Change makers, difference embracers

Rich with a diversity of people and cultures, Sacramento State is home to the hardworking, innovative, and passionate.

An Asian American and Native American Pacific Islander-Serving Institution since 2011, we are proud to support the 2024 Asian Pacific Americans in Higher Education Conference.



SACRAMENTO STATE
Redefine the Possible

csus.edu



*Leader by leader, we amplify our voices
in unity and action to support access,
equity, and achievement for community
college students throughout California.*

Congratulations to APAHE for a successful 2024 conference



COMMUNITY COLLEGE LEAGUE OF CALIFORNIA

CCLEAGUE.ORG



miracosta.edu

Top Three
Bay Area CCs
for transfer¹

#1 CCD with the
highest AAPI
student enrollment²



BRIGHT FUTURES

ohlone.edu

Ohlone College Board of Trustees: Greg Bonaccorsi, Suzanne Lee Chan, Betty Ho, Lance Kwan, Elisa Martinez, Dr. Rakesh Sharma, Dr. Richard Watters, and Student Trustee Omar Ansari



Chair of the Board of Trustees Suzanne Chan and President/Superintendent Charles Sasaki with Ohlone College students

¹ Source: IPEDS ² Source: CCC Data Mart (Student Count by %)

PCC is proud to salute
**Asian Pacific Americans in
Higher Education**
for driving student success.



pasadena.edu



@PCCLancer



@pasadenacitycollege



SAN DIEGO COMMUNITY COLLEGE DISTRICT

CITY COLLEGE • MESA COLLEGE • MIRAMAR COLLEGE • COLLEGE OF CONTINUING EDUCATION

*We are proud to support the programs
and values of the*

ASIAN PACIFIC AMERICANS IN HIGHER EDUCATION

BOARD OF TRUSTEES: Geysil Arroyo, Mary Graham,
Craig Milgrim, Bernie Rhinerson, Maria Nieto Senour, Ph.D.
Chancellor Gregory Smith

Empowering our community

At Fresno State, we know that when we embrace, celebrate and meet the needs of our diverse campus community, everyone feels empowered to succeed. Our graduates are well-prepared to serve California's Central Valley and equipped to make a positive impact anywhere in the world because they are supported and inspired by staff, faculty and administrators who share the same drive toward inclusive excellence.

Located in the ninth most diverse city in the nation, Fresno State is proud to hold its designation as an Asian American and Native American Pacific Islander-Serving Institution and celebrate the rich cultures and traditions of its many communities. With a deep commitment to empowering our community, Fresno State demonstrates the power to transform individuals and their families while elevating the quality of life in our region and beyond.





WE DEFINE THE
Future

**CSUSB RANKS
#4 IN SOCIAL
MOBILITY**

- U.S. News & World Report

Empowering Success.

Cal State San Bernardino changes the lives of students and their families by moving them up the social and economic ladder of society.



909.537.5188 | www.csusb.edu